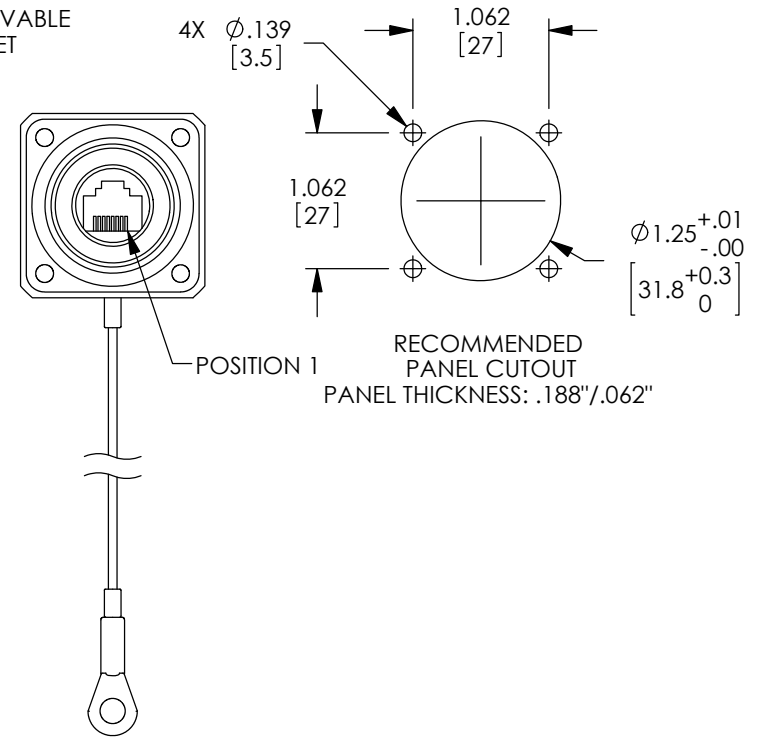
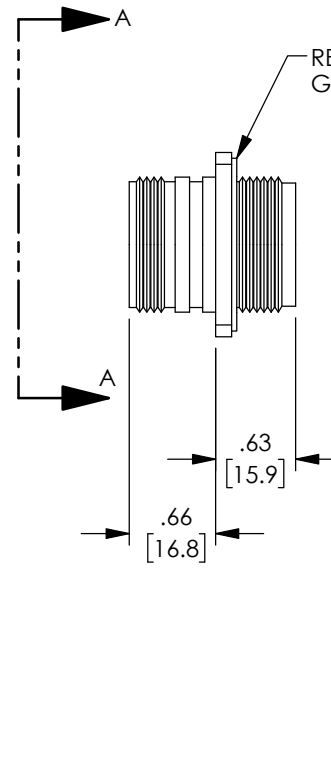
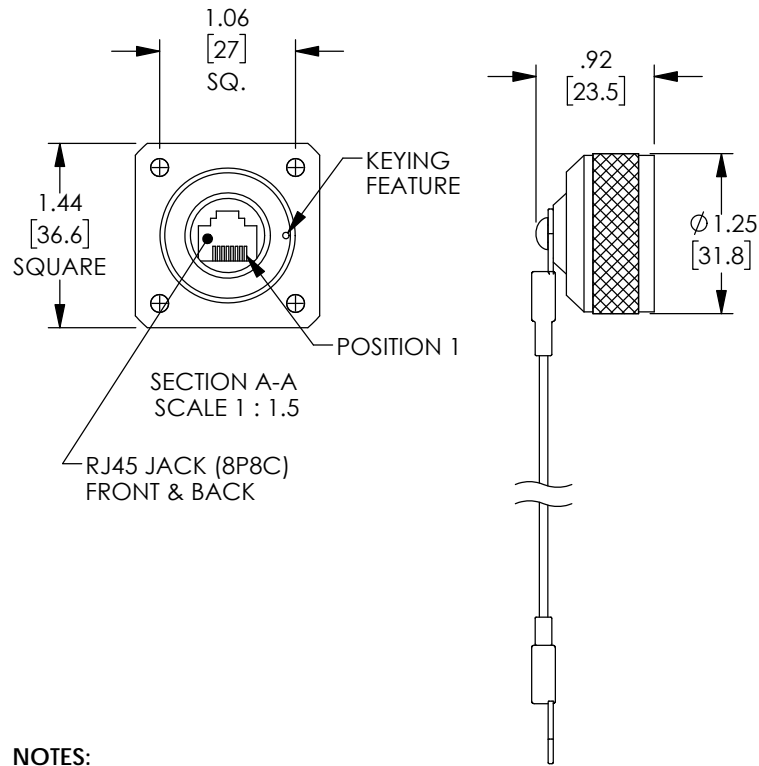


PROPRIETARY NOTICE

This document discloses confidential subject matter in which MiletTek Corporation and its subsidiaries have proprietary rights. Neither receipt nor possession thereof confers or transfers any right to reproduce or disclose the document, any part thereof, any information contained therein, or any physical article or device, or to practice any method or process, except by written permission from, or written agreement with MiletTek Corporation and its subsidiaries.

REV	REVISIONS		
	DESCRIPTION	DATE	APPROVED
A	REV A DRAWING RELEASED	06/26/2018	BPUCHASKI





NOTES:

- MATERIAL:
EXTERNAL PARTS: ALUMINUM/BLACK ANODIZED
INTERNAL PARTS: ALUMINUM
MISC. HARDWARE: STAINLESS STEEL
SEALS: SILICONE/NITRILE
- MISCELLANEOUS:
RATING: IP-68
MOUNTING HARDWARE NOT INCLUDED.
PERFORMANCE MEETS OR EXCESS CATEGORY 6
ANSI/EIA 568-C.2 SPECIFICATIONS.
- KIT INCLUDES:
(1) DUST CAP WITH LANYARD
(1) GASKET
- ALL DIMENSIONS ARE FOR REFERENCE ONLY.
- COMPONENT SHALL BE INDIVIDUALLY PACKAGED
IN ACCORDANCE WITH MILESTEK SPECIFICATION PS-0054.

REGULATORY COMPLIANCE:
CE2011/65/EU(RoHS DIRECTIVE)

NON CONTROLLED DRAWING IF PRINTED

CAD SYSTEM DRAWING - DO NOT REVISE MANUALLY									
				UNLESS OTHERWISE SPECIFIED ALL DIMENSIONS ARE IN INCHES	SIGNATURE	DATE	 Military / Aerospace / Communications / Industry		MILESTEK CORPORATION 301 LEORA LANE, SUITE 100 LEWISVILLE, TX 75056 PHONE: (940) 484-9400 FAX: (940) 566-1047
				OVERALL CABLE LENGTH TOLERANCE: ±12 [303] ±1 [25] / -0 >12 [305] ≤60 [1524] = +2 [51] / -0 >60 [1524] ≤120 [3048] = +4 [102] / -0 >120 [3048] ≤300 [7620] = +6 [152] / -0 >300 [7620] = +5% / -0%	DRAWN BY: BPUCHASKI	06/26/2018	 Military / Aerospace / Communications / Industry		
					CHECKED BY: DGUTTADAURO	06/26/2018			
					APPROVED ENGINEERING: D.GUTTADAURO	06/26/18			
					APPROVED MANUFACTURING:				
				ALL OTHER DIMENSIONAL TOLERANCES: X = ±.2 [5.08] XX = ±.02 [5.1] XXX = ±.005 [1.3]	CUSTOMER APPROVAL		TITLE C6 FLNG MNT ANOD DCAP		
DASH	NEXT ASSY	USED ON		CUSTOMER REFERENCE DOCUMENT:			SIZE A	DRAWING NUMBER: T6C00017	
APPLICATION					CAGE CODE: 42977		SCALE: NTS		SHEET 1 OF 1