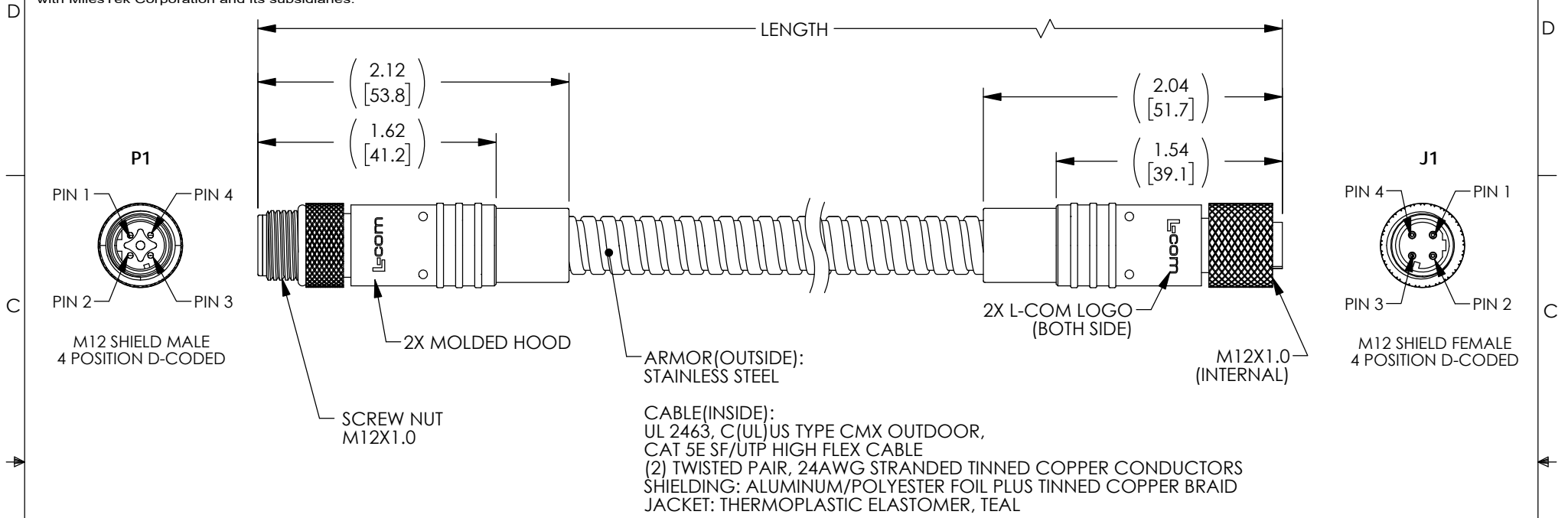


PROPRIETARY NOTICE

This document discloses confidential subject matter in which MilesTek Corporation and its subsidiaries have proprietary rights. Neither receipt nor possession thereof confers or transfers any right to reproduce or disclose the document, any part thereof, any information contained therein, or any physical article or device, or to practice any method or process, except by written permission from, or written agreement with MilesTek Corporation and its subsidiaries.

REVISIONS			
REV	DESCRIPTION	DATE	APPROVED
A	INITIAL RELEASE	05/31/2019	DFRISIELLO



NOTES

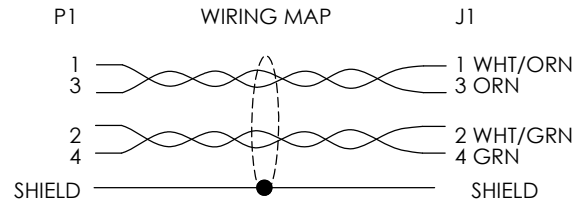
MATERIAL:
 MOLDED HOOD: THERMOPLASTIC POLYURETHANE, BLACK
 INSULATOR: NYLON, BLACK
 SHELL/SCREW NUT: BRASS, NICKEL PLATE
 CONTACTS: PHOSPHOR BRONZE, 15µ" MIN. GOLD PLATE
 ARMOR COUPLER: BRASS, NICKEL PLATE

ELECTRICAL:
 NOMINAL VOLTAGE RATING: 250 VAC/VDC
 MAX CURRENT: 4A

APPLICATION:
 INGRESS PROTECTION RATING IS IP68 (WHEN MATED).
 METAL ARMOR CRUSH RESISTANCE: 1500 PSI (MIN).

ENVIRONMENTAL:
 OPERATING TEMPERATURE RANGE: -40°C TO +80°C
 CABLE JACKET RESISTANCE: OIL, SUNLIGHT, AND WELD SPLATTER RESISTANT

MISCELLANEOUS
 CABLE ASSEMBLY TO BE TESTED FOR CONTINUITY.
 CABLE ASSEMBLY SHALL BE INDIVIDUALLY PACKAGED IN ACCORDANCE WITH MILESTEK SPECIFICATION PS-0054.



MODEL NUMBER	LENGTH	
	METERS	FEET
T5A00024-1M	1.0	3.28
T5A00024-2M	2.0	6.56
T5A00024-3M	3.0	9.84
T5A00024-5M	5.0	16.41
T5A00024-10M	10.0	32.81

UNLESS OTHERWISE SPECIFIED ALL DIMENSIONS ARE IN INCHES OVERALL CABLE LENGTH TOLERANCE: ≤12 [305] = +1 [25] / -0 >12 [305] ≤60 [1524] = +2 [51] / -0 >60 [1524] ≤120 [3048] = +4 [102] / -0 >120 [3048] ≤300 [7620] = +6 [152] / -0 >300 [7620] = +5% / -0% ALL OTHER DIMENSIONAL TOLERANCES: X = ± 2 [508] .XX = ± .02 [51] .XXX = ± 0.05 [1.3]	SIGNATURE	DATE	MILESTEK CORPORATION 301 LEORA LANE, SUITE 100 LEWISVILLE, TX 75056 PHONE: (940) 484-9400 FAX: (940) 566-1047
	DRAWN BY: DFRISIELLO	05/28/2019	
	CHECKED BY: DGUTTADAUR	05/31/2019	
	APPROVED BY: DGUTTADAUR	05/31/2019	
CUSTOMER REFERENCE DOCUMENT:	CONFIGURATION DETAILS OF UNDIMENSIONED FEATURES MAY VARY		TITLE C5E M12D M/F TPE 24 MTL
CAGE CODE: 4Z977	SIZE A	DRAWING NUMBER: T5A00024	REV. A
	SCALE: NTS		SHEET 1 OF 1