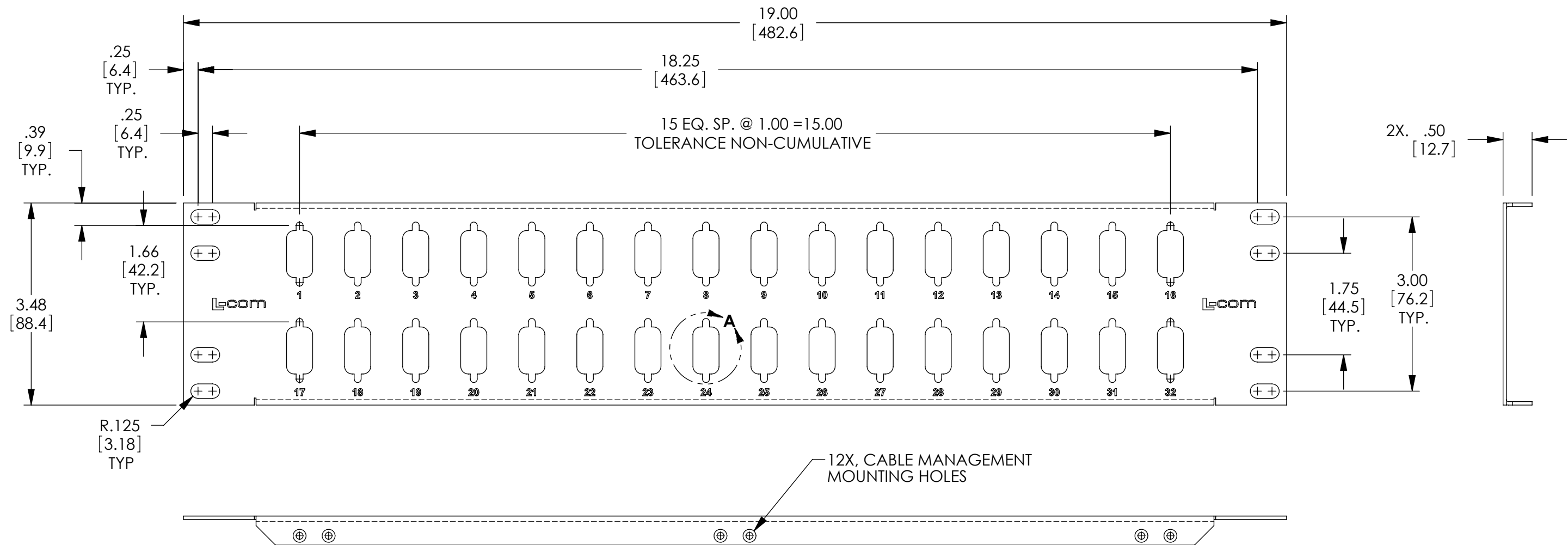


This document discloses confidential subject matter in which MilesTek Corporation and its subsidiaries have proprietary rights. Neither receipt nor possession thereof confers or transfers any right to reproduce or disclose the document, any part thereof, any information contained therein, or any physical article or device, or to practice any method or process, except by written permission from, or written agreement with MilesTek Corporation and its subsidiaries.

REF00 04	REVISIONS			
	REV	DESCRIPTION	DATE	APPROVED
	A	INITIAL RELEASE	5/26/17	R.CLARK



NOTES:

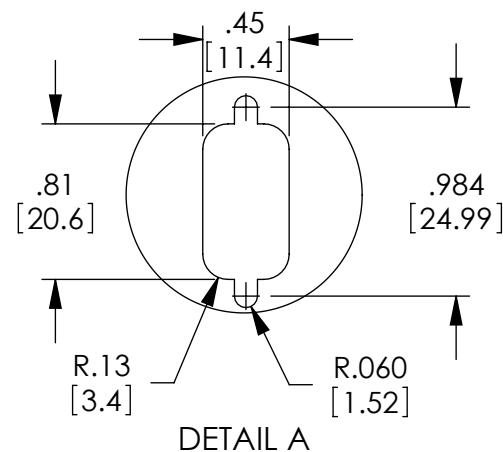
MATERIAL: 16 GA (.060 [1.52] THK) COLD ROLLED STEEL

FINISH: FLAT BLACK POWDER COAT.


SILKSCREEN: COLOR: WHITE

PANEL SHALL BE INDIVIDUALLY PACKAGED IN ACCORDANCE WITH SPECIFICATION PS-0054.

REGULATORY COMPLIANCE:
CE2011/65/EU (RoHS DIRECTIVE)



NON CONTROLLED DRAWING IF PRINTED

AS9100C CERTIFIED			CAD SYSTEM DRAWING - DO NOT REVISE MANUALLY							
			UNLESS OTHERWISE SPECIFIED ALL DIMENSIONS ARE IN INCHES		SIGNATURE		DATE		 <div>MILESTEK CORPORATION 1506 INTERSTATE 35 WEST DENTON, TX 76207 PHONE: 866.524.1553 FAX: 940.591.7086</div>	
			OVERALL CABLE LENGTH TOLERANCE: S12 [305] = +1 [25] / -0 >12 [305] ≤60 [1524] = +2 [51] / -0 >60 [1524] ≤120 [3048] = +4 [102] / -0 >120 [3048] ≤300 [7620] = +6 [152] / -0 >300 [7620] = +5% / -0%		DRAWN BY: R. CLARK		5/26/17			
			ALL OTHER DIMENSIONAL TOLERANCES: .X = ± .2 [508] .XX = ± .02 [51] .XXX = ±.005 [13]		CHECKED BY: M. MARTINEZ		5/26/17			
					APPROVED ENGINEERING: M. MARTINEZ		5/26/17			
					APPROVED MANUFACTURING:				TITLE	
					CUSTOMER APPROVAL				2U PANEL W/32 DB9-HD15 CUTOUTS	
DASH			NEXT ASSY		USED ON		SIZE		DRAWING NUMBER:	
APPLICATION			CUSTOMER REFERENCE DOCUMENT:		CAGE CODE: 4Z977		B		REF00104	
							SCALE: NTS		SHEET 1 OF 1	