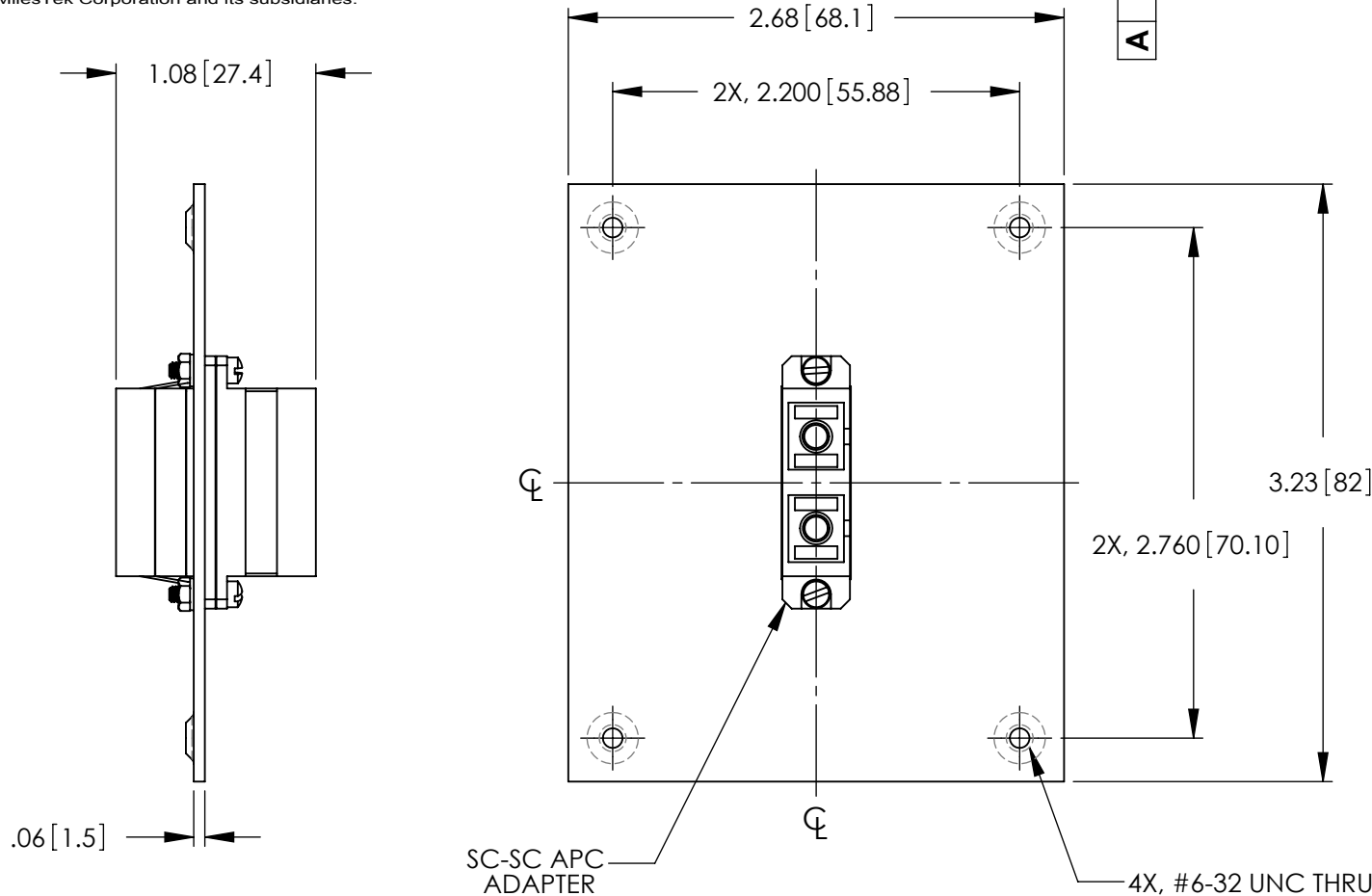


# PROPRIETARY NOTICE

This document discloses confidential subject matter in which MilesTek Corporation and its subsidiaries have proprietary rights. Neither receipt nor possession thereof confers or transfers any right to reproduce or disclose the document, any part thereof, any information contained therein, or any physical article or device, or to practice any method or process, except by written permission from, or written agreement with MilesTek Corporation and its subsidiaries.



REV	REVISIONS		
	DESCRIPTION	DATE	APPROVED
A	INITIAL RELEASE	5/30/17	R.CLARK

## NOTES:

1. PANEL MATERIAL: .06 [1.5] THK COLD ROLLED STEEL.
2. PANEL FINISH: FLAT BLACK POWDER COAT.
3. KIT CONTAINS 4, #6-32 UNC SCREWS.
4. PANEL ASSEMBLY SHALL BE PACKAGED IN ACCORDANCE WITH SPECIFICATION PS-0054.
5. SUPPLIED WITH DUST CAPS ON COUPLER.

REGULATORY COMPLIANCE:  
CE2011/65/EU(RoHS DIRECTIVE)

## NON CONTROLLED DRAWING IF PRINTED

AS9100C CERTIFIED			CAD SYSTEM DRAWING - DO NOT REVISE MANUALLY			
			SIGNATURE	DATE		
			DRAWN BY: R.CLARK	5/30/17		
			CHECKED BY: M.MARTINEZ	5/30/17	TITLE USP SUB-PANEL w/ SC DPLX CPLR	
			APPROVED ENGINEERING: M.MARTINEZ	5/30/17		
			APPROVED MANUFACTURING:		SIZE A	
			CUSTOMER APPROVAL			
DASH	NEXT ASSY	USED ON	CAGE CODE: 42977		DRAWING NUMBER: REF00057	
APPLICATION			CUSTOMER REFERENCE DOCUMENT:		SCALE: NTS	SHEET 1 OF 1

UNLESS OTHERWISE SPECIFIED ALL DIMENSIONS ARE IN INCHES  
OVERALL CABLE LENGTH TOLERANCE:  
≤12 [305] = +1 [25] / -0  
>12 [305] ≤60 [1524] = +2 [51] / -0  
>60 [1524] ≤120 [3048] = +4 [102] / -0  
>120 [3048] ≤300 [7620] = +6 [152] / -0  
>300 [7620] = +5% / -0%  
ALL OTHER DIMENSIONAL TOLERANCES:  
.X = ±.2 [5.08]  
.XX = ±.02 [1.51]  
.XXX = ±.005 [1.31]

MILESTEK CORPORATION  
1506 INTERSTATE 35 WEST  
DENTON, TX 76207  
PHONE: 866.524.1553  
FAX: 940.591.7086