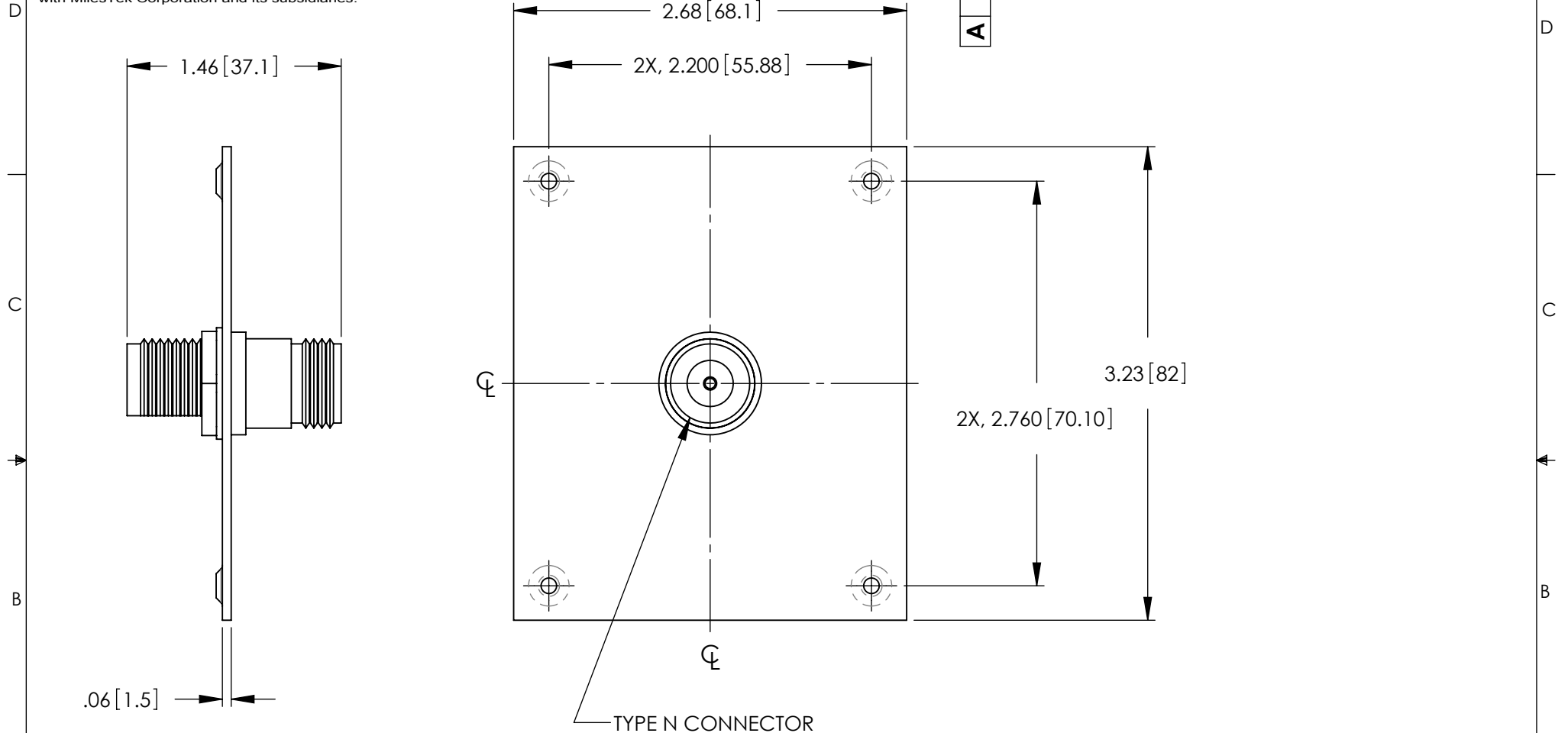


# PROPRIETARY NOTICE

This document discloses confidential subject matter in which MilesTek Corporation and its subsidiaries have proprietary rights. Neither receipt nor possession thereof confers or transfers any right to reproduce or disclose the document, any part thereof, any information contained therein, or any physical article or device, or to practice any method or process, except by written permission from, or written agreement with MilesTek Corporation and its subsidiaries.

REV	REVISIONS		
	DESCRIPTION	DATE	APPROVED
	A INITIAL RELEASE	5/30/17	R.CLARK



## NOTES:

1. PANEL MATERIAL: .06 [1.5] THK COLD ROLLED STEEL.
2. PANEL FINISH: FLAT BLACK POWDER COAT.
3. KIT CONTAINS 4, #6-32 UNC SCREWS.
4. PANEL ASSEMBLY SHALL BE PACKAGED IN ACCORDANCE WITH SPECIFICATION PS-0054.
5. SUPPLIED WITH DUST CAPS ON COUPLER.

REGULATORY COMPLIANCE:  
CE2011/65/EU(RoHS DIRECTIVE)

## NON CONTROLLED DRAWING IF PRINTED

AS9100C CERTIFIED			CAD SYSTEM DRAWING - DO NOT REVISE MANUALLY			
			SIGNATURE	DATE		
			DRAWN BY: R.CLARK	5/30/17		
			CHECKED BY: M.MARTINEZ	5/30/17	MILESTEK CORPORATION 1506 INTERSTATE 35 WEST DENTON, TX 76207 PHONE: 866.524.1553 FAX: 940.591.7086	
			APPROVED ENGINEERING: M.MARTINEZ	5/30/17		
			APPROVED MANUFACTURING:		TITLE TYPE N SUB PANEL	
			CUSTOMER APPROVAL		SIZE <b>A</b>	
DASH	NEXT ASSY	USED ON	CUSTOMER REFERENCE DOCUMENT:		DRAWING NUMBER: REF00023	
APPLICATION			CAGE CODE: 42977		SCALE: NTS	SHEET 1 OF 1