

RED INDICATES ORIGINAL

DATA CONTAINED IN THIS DOCUMENT IS PROPRIETARY TO TROMPETER ELECTRONICS INC. AND SHALL NOT BE DISCLOSED, COPIED OR USED FOR PROCUREMENT OR MANUFACTURE WITHOUT EXPRESS WRITTEN PERMISSION.

REVISIONS

3-0285 SH 1

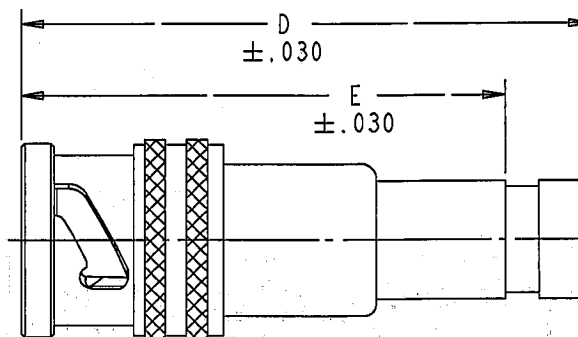
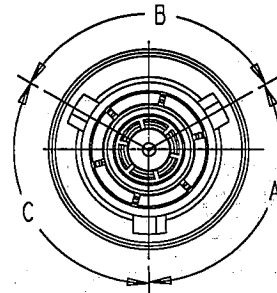
REV	ECO NO.	DESCRIPTION	DWN	APPROVED	DATE
F	12645	REVISED C/GROUPS -217 & -221; SEE ECO	J S	<i>[Signature]</i>	1/8/99

DASH NO.	CABLES ACCOMODATED	ASSEMBLE PER	DIM "D"	DIM "E"
-201	M17/176-00002	TAI-201	1.540	1.375
-202	TWC-78-1			
-203	TWC-124-1A			
-204	10602, RAYCHEM			
-205	TWAC-78-1F2			
-206	7826D0130, RAYCHEM			
-207	83310, BELDEN			
-208	202-3927, MICRODOT			
-209	202-3942, MICRODOT			
-210	8451, BELDEN			
-211	202-3934, MICRODOT			
-212	2524E0114, RAYCHEM			
-213	TWC-78-2			
-214	TWC-124-2			
-215	BL982, TIMES			
-216	BL1242, TIMES			
-217	M27500-22 RC2S06			
-218	EDP221888, RAYCHEM			
-219	252601114, RAYCHEM			
-220	GC875RRI, GRUMMAN			
-221	10614, RAYCHEM GC875TM24H, GRUMMAN			
-222	10613, RAYCHEM			
-223	HMS2-1149, HUGHES			
-224	TWCP-124-3			
-225	PS665PL, PRIME STOCK			
-226	TWCP-124-5	TAI-209	1.660	1.495

MILITARY PART NO (PIN)	MILITARY CABLE PART NO	TROMPETER PART NO (REF ONLY)
M49142/03-0016	M17/45-RG108	MPL75MC-213
M49142/03-0116	M17/45-RG108	MPL75MCY-213
M49142/03-0216	M17/45-RG108	MPL75MCS-213
M49142/03-0017	M17/176-00002	MPL75MC-201
M49142/03-0117	M17/176-00002	MPL75MCY-201
M49142/03-0217	M17/176-00002	MPL75MCS-201

POLARIZATION CHART				
KEY LETTER	A DEGREES	B DEGREES	C DEGREES	COLOR BAND
NONE	120°	120°	120°	NONE
T	100°	150°	110°	RED
U	120°	130°	110°	ORANGE
V	115°	130°	115°	YELLOW
W	125°	110°	125°	GREEN
X	130°	100°	130°	BLUE
Y	110°	140°	110°	VIOLET
Z	100°	160°	100°	GRAY
S	135°	135°	90°	WHITE

INCH	MM
.005	0.13
.030	0.76
.296	7.52
.593	15.06
1.375	34.93
1.495	37.97
1.540	39.12
1.660	42.16



-201 SHOWN

5. WHEN CONNECTOR IS SUPPLIED TO MILITARY PART NO (SEE TABLE 2):
- ALL PARTS NORMALLY PLATED TFS-1A OR TFS-1U (NICKEL) ARE TO BE PLATED TFS-1M (SILVER)
 - MARK PART WITH MILITARY PIN (SEE TABLE 2) AND "14949"
 - QUALITY CONFORMANCE INSPECTION SHALL BE PER MIL-C-49142 SECTION 4.5

4. EXAMPLE OF COMPLETE MODEL NO:
- BASIC MODEL NO: PL75MC T - 201 CABLE GROUP DASH NO (SEE TABLE 1)
- POLARIZATION LETTER: NONE REQD FOR STD POLARIZATION (SEE TABLE 3)

3. CONCENTRIC TWINAX 3-LUG TRB, MILITARY FULL CRIMP CABLE PLUG

2. FINISH: TFS-1A (NICKEL) 5

1. ALL DIMENSIONS ARE IN INCHES

RECOMMENDED
HEX CRIMP
SCALE 2/1



QTY	DESCRIPTION	PART NUMBER	ITEM
TOL UNLESS SPECIFIED	TROMPETER ELECTRONICS, INC.®		
.XX ± .005		PL75MC/T/U/V/ W/X/Y/Z/S	
DWG J S 1-7-99	MATERIAL	CODE IDENT	DRAWING NO.
CHK <i>[Signature]</i> 1/8/99		14949	3-0285
ENGR <i>[Signature]</i>			REV F
NEXT ASSY APPR <i>[Signature]</i> 1/8/99	SCALE 3/1	DATE 4-6-94	SHEET 1 OF 2