

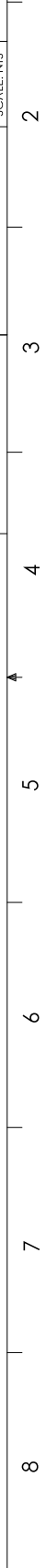
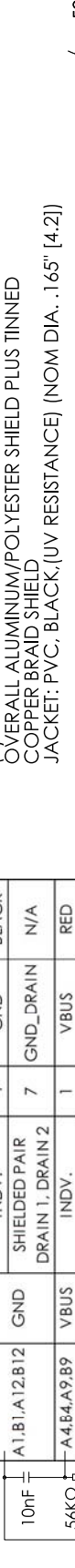
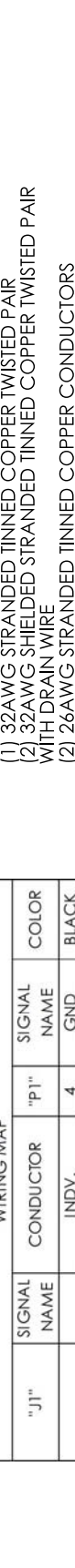
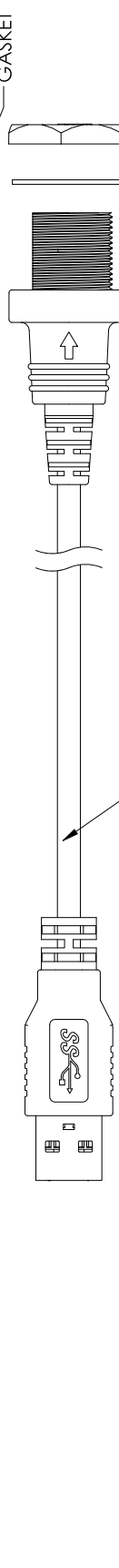
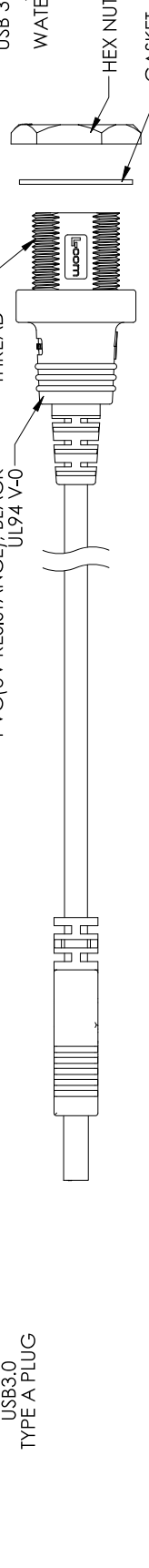
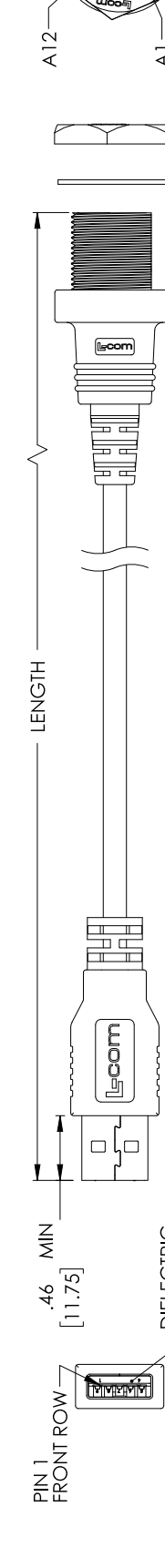
REV	DESCRIPTION	DATE	APPROVED
A	REV A DRAWING RELEASED	05/15/2019	DGUITADAUR

REVISIONS

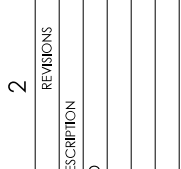
PROPRIETARY NOTICE

This document discloses confidential subject matter in which MilesTek Corporation and its subsidiaries have proprietary rights. Neither receipt nor possession thereof confers or transfers any right to reproduce or disclose the contents or any part thereof to any person without the written consent of MilesTek Corporation or its subsidiaries. This document is a physical article or device, or to practice any method or process, except by written permission from, or written agreement with MilesTek Corporation and its subsidiaries.

UNLESS OTHERWISE SPECIFIED ALL DIMENSIONS ARE IN INCHES
 OVERALL CABLE LENGTH TOLERANCE:
 >10 [252] = +1 [25] / -1 [0]
 >10 [1524] <= 10 [1524] = +2 [127] / -0
 >120 [3048] <= 100 [7620] = +2 [152] / -0
 >300 [7620] = +5% / -5%
 ALL OTHER DIMENSIONAL TOLERANCES:
 .XX = ±.005 [0.127]
 .XXX = ±.002 [0.051]



RECOMMENDED PANEL CUTOUT



PART NUMBER	METER	LENGTH	FEET
MUS3A00061-1M	1.0	3.28	3.28

CABLE:
 (1) 32AWG STRANDED TINNED COPPER TWISTED PAIR
 (2) 32AWG SHIELDED STRANDED TINNED COPPER TWISTED PAIR WITH DRAIN WIRE
 (2) 26AWG STRANDED TINNED COPPER CONDUCTORS OVERALL ALUMINUM/POLYESTER SHIELD PLUS TINNED COPPER BRAID SHIELD
 JACKET: PVC, BLACK, (UV RESISTANCE) (NOM DIA. .165" [4.2])

SIGNAL NAME	CONDUCTOR	"P1"	SIGNAL NAME	COLOR
A1, B1, A12, B12	GND	4	GND	BLACK
A4, B4, A9, B9	DRAIN 1, DRAIN 2	7	GND_DRAIN	N/A
A5	INDV.	1	VBUS	RED
B5	INDV.	N/C	N/C	
A6, B6	UNSHIELDED PAIR	3	D+	GREEN
A7, B7	SHIELDED PAIR 1	2	D-	WHITE
A2	SHIELDED PAIR 2	9	StdA_SSTX+	YELLOW
A3	SHIELDED PAIR 1	8	StdA_SSTX-	BLUE
B11	SHIELDED PAIR 2	6	StdA_SSRX+	ORANGE
B10	SHIELDED PAIR 2	5	StdA_SSRX-	PURPLE
SHELL	BRAID	SHELL	SHIELD	N/A

WIRING MAP

10nF
 56KΩ

NOTES:
 1. INGRESS PROTECTION RATING IS IP67 (J1 ONLY, MATED)
 2. TYPE "A" CONNECTOR CONTACTS HAVE 30 INCHES GOLD OVER NICKEL PLATING
 TYPE "C" CONNECTOR CONTACTS HAVE 15 INCHES GOLD OVER NICKEL PLATING
 3. CABLE TEMPERATURE RANGE: -20 °C to +80 °C (FIXED)
 4. CABLE ASSEMBLY SHALL HAVE 360° SHIELD TERMINATION
 5. CABLE ASSEMBLY SHALL BE TESTED FOR CONTINUITY
 6. L-COM LOGO AND ARROW ICON MAY BE ON ANY SIDE OF THE OVERMOLD FOR USB SERIES "C" END.
 7. CABLE ASSEMBLY SHALL BE INDIVIDUALLY PACKAGED IN ACCORDANCE WITH MILESTEK SPECIFICATION PS-0054.

MILESTEK CORPORATION
 3010 KENYON AVE., SUITE 100
 FORT MYERS, FL 33901
 PHONE: (941) 484-9400
 FAX: (941) 564-1047

CA USB 3.0 TYPE A-M TO WP TYPE C-F
 SEE DRAWING NUMBER: MUS3A00061
 SCALE: NTS
 SHEET 1 OF 1