



## SMA Male to SMA Female Using Flexible RG400 Coax Cable

### RF Cable Assemblies Technical Data Sheet

MTCA00062

#### Configuration

- Connector 1: SMA Male
- Connector 2: SMA Female
- Cable Type: RG400

#### Features

- Max Frequency 12.4 GHz
- 69.5% Phase Velocity
- Double Shielded
- FEP Jacket

#### Applications

- General Purpose
- Laboratory Use

#### Description

MilesTek's MTCA00062 coaxial cable assembly is a SMA male to SMA female using flexible RG400 coax cable. MilesTek cables are built using high quality materials and are tested to insure these assemblies meet all performance specifications. Coaxial cable assemblies are stocked in standard lengths and will ship same day. Custom lengths of this cable assembly are also available upon request. These assemblies are part of MilesTek's extensive portfolio of products that are in stock and ship same day.

#### Electrical Specifications

Description	Minimum	Typical	Maximum	Units
Frequency Range	DC		12.4	GHz
VSWR			1.4:1	
Velocity of Propagation		69.5		%
Capacitance		32 [104.99]		pF/ft [pF/m]
Operating Voltage (AC)			500	Vrms

#### Specifications by Frequency

Description	F1	F2	F3	F4	F5	Units
Frequency	0.1	1	5	11		GHz
Insertion Loss (Typ.)	0.044	0.147	0.36	0.579		dB/ft
	0.14	0.48	1.18	1.9		dB/m

#### Electrical Specification Notes:

Insertion Loss does not include the loss of the connectors. Insertion Loss is estimated as 0.1 dB per connector.

Click the following link (or enter part number in "SEARCH" on website) to obtain additional part information including price, inventory and certifications: [SMA Male to SMA Female Using Flexible RG400 Coax Cable MTCA00062](#)



## SMA Male to SMA Female Using Flexible RG400 Coax Cable

### RF Cable Assemblies Technical Data Sheet

MTCA00062

#### Mechanical Specifications

##### Cable Assembly

Diameter	0.315 in [8 mm]
Weight	0.068 lbs [30.84 g]

##### Cable

Cable Type	RG400
Impedance	50 Ohms
Inner Conductor Type	Stranded
Inner Conductor Material and Plating	Copper, Silver
Dielectric Type	PTFE
Number of Shields	2
Shield Layer 1	Silver Plated Copper Braid
Shield Layer 2	Silver Plated Copper Braid
Jacket Material	FEP, Tan
Jacket Diameter	0.195 in [4.95 mm]

One Time Minimum Bend Radius	1 in [25.4 mm]
------------------------------	----------------

#### Connectors

Description	Connector 1	Connector 2
Type	SMA Male	SMA Female
Specification	MIL-STD-348A	
Impedance	50 Ohms	50 Ohms
Contact Material and Plating	Brass, Gold	Beryllium Copper, Gold
Contact Plating Specification	50µ in. minimum	50µ in. minimum.
Dielectric Type	Teflon	PTFE
Body Material and Plating	Brass, Nickel	Brass, Nickel
Body Plating Specification	100µ in. minimum	100µ in. minimum.
Hex Size	5/16 in	
Torque	5 in-lbs [0.57 Nm]	

#### Compliance Certifications (see [product page](#) for current document)

#### Plotted and Other Data

##### Notes:

- Values at 25°C, sea level.

Click the following link (or enter part number in "SEARCH" on website) to obtain additional part information including price, inventory and certifications: [SMA Male to SMA Female Using Flexible RG400 Coax Cable MTCA00062](#)



## SMA Male to SMA Female Using Flexible RG400 Coax Cable

### RF Cable Assemblies Technical Data Sheet

MTCA00062

#### How to Order

Part Number Configuration:

**MTCA00062**

- **xx**

**uu**

Unit of Measure:  
cm = Centimeters  
<blank> = Inches  
Length  
Base Number

Example: MTCA00062-12 = 12 inches long cable  
MTCA00062-100cm = 100 cm long cable

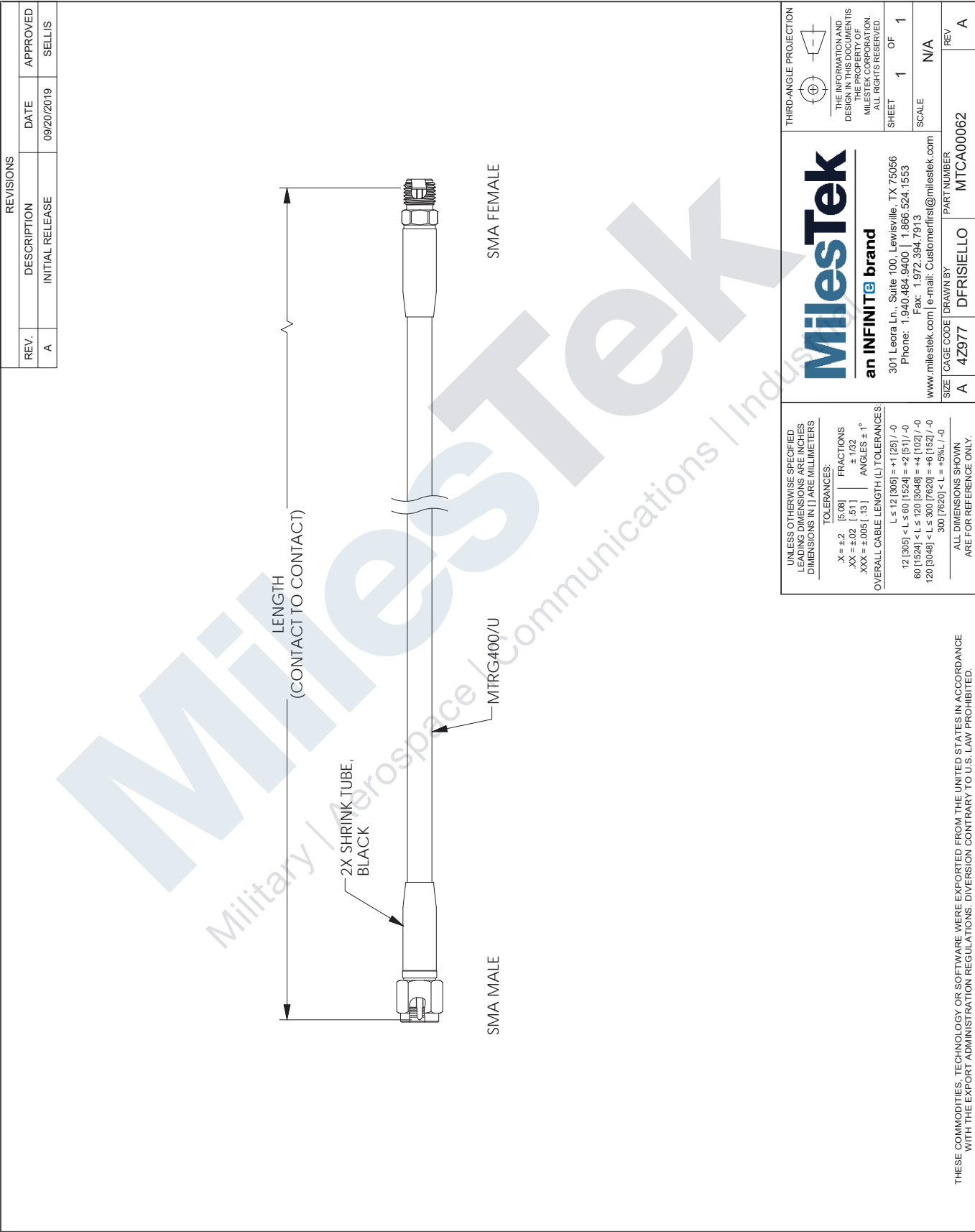
Our offering, used primarily in military, R&D and production applications, consists of a comprehensive line of MIL-STD-1553B data bus couplers, harnesses and cable assemblies, connectors and connector termination systems. MilesTek also offers expertise in manufacturing custom cable assemblies and harnesses.

Click the following link (or enter part number in "SEARCH" on website) to obtain additional part information including price, inventory and certifications: [SMA Male to SMA Female Using Flexible RG400 Coax Cable MTCA00062](#)

URL: <https://www.milestek.com/SMA-Male-SMA-Female-MTRG400U-MTCA00062-p.aspx>

The information contained in this document is accurate to the best of our knowledge and representative of the part described herein. It may be necessary to make modifications to the part and/or the documentation of the part, in order to implement improvements. MilesTek reserves the right to make such changes as required. Unless otherwise stated, all specifications are nominal. MilesTek does not make any representation or warranty regarding the suitability of the part described herein for any particular purpose, and MilesTek does not assume any liability arising out of the use of any part or documentation.

MTCA00062 CAD Drawing  
SMA Male to SMA Female Using Flexible RG400 Coax Cable



T-Rev C