



SMA Male to SMA Female Bulkhead Mount Using Flexible RG316 Coax Cable

RF Cable Assemblies Technical Data Sheet

MTCA00037

Configuration

- Connector 1: SMA Male
- Connector 2: SMA Female Bulkhead
- Cable Type: RG316

Features

- 69% Phase Velocity
- FEP Jacket

Applications

- General Purpose
- Laboratory Use

Description

MilesTek's MTCA00037 coaxial cable assembly is a SMA male to SMA female bulkhead mount using flexible RG316 coax cable. MilesTek cables are built using high quality materials and are tested to insure these assemblies meet all performance specifications. Coaxial cable assemblies are stocked in standard lengths and will ship same day. Custom lengths of this cable assembly are also available upon request. These assemblies are part of MilesTek's extensive portfolio of products that are in stock and ship same day.

Electrical Specifications

Description	Minimum	Typical	Maximum	Units
VSWR			1.4:1	
Velocity of Propagation		69		%
Jacket Spark			2,000	Vrms

dB/m

Electrical Specification Notes:

Insertion Loss does not include the loss of the connectors. Insertion Loss is estimated as 0.1 dB per connector.

Mechanical Specifications

Cable Assembly

Diameter 0.315 in [8 mm]

Cable

Cable Type RG316
 Impedance 50 Ohms
 Inner Conductor Type Stranded
 Inner Conductor Material and Plating Copper Clad Steel, Silver
 Dielectric Type PTFE
 Number of Shields 1
 Shield Layer 1 Silver Plated Copper Braid

Click the following link (or enter part number in "SEARCH" on website) to obtain additional part information including price, inventory and certifications: [SMA Male to SMA Female Bulkhead Mount Using Flexible RG316 Coax Cable MTCA00037](#)



SMA Male to SMA Female Bulkhead Mount Using Flexible RG316 Coax Cable

RF Cable Assemblies Technical Data Sheet

MTCA00037

Jacket Material FEP, Tan
Jacket Diameter 0.102 in [2.59 mm]

Connectors

Description	Connector 1	Connector 2
Type	SMA Male	SMA Female Bulkhead
Specification	MIL-STD-348A	
Impedance	50 Ohms	50 Ohms
Contact Material and Plating	Brass, Gold	Beryllium Copper, Gold
Contact Plating Specification	30 µin minimum	
Dielectric Type	PTFE	PTFE
Body Material and Plating	Brass, Nickel	Brass, Nickel
Body Plating Specification	100 µin minimum	
Coupling Nut Material and Plating	Brass, Nickel	
Coupling Nut Plating Specification	100 µin minimum	
Hex Size	5/16 inch	
Torque	3 in-lbs [0.34 Nm]	

Compliance Certifications (see [product page](#) for current document)

Plotted and Other Data

Notes:

- Values at 25°C, sea level.

How to Order

Part Number Configuration:

MTCA00037

- **xx** **uu**

Unit of Measure:
cm = Centimeters
<blank> = Inches
Length
Base Number

Example: MTCA00037-12 = 12 inches long cable
MTCA00037-100cm = 100 cm long cable

Click the following link (or enter part number in "SEARCH" on website) to obtain additional part information including price, inventory and certifications: [SMA Male to SMA Female Bulkhead Mount Using Flexible RG316 Coax Cable MTCA00037](#)



SMA Male to SMA Female Bulkhead Mount Using Flexible RG316 Coax Cable

RF Cable Assemblies Technical Data Sheet

MTCA00037

Our offering, used primarily in military, R&D and production applications, consists of a comprehensive line of MIL-STD-1553B data bus couplers, harnesses and cable assemblies, connectors and connector termination systems. MilesTek also offers expertise in manufacturing custom cable assemblies and harnesses.

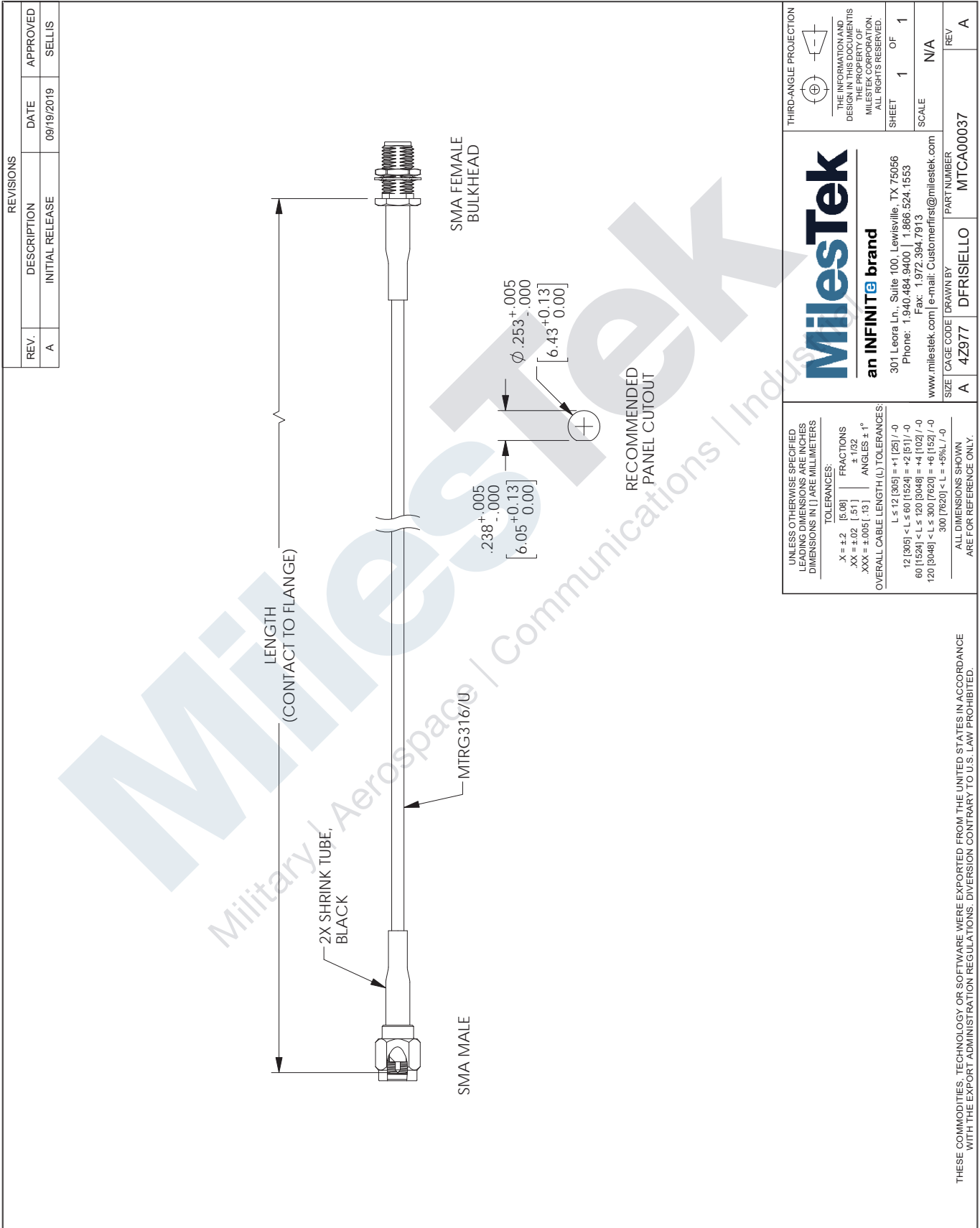
Click the following link (or enter part number in "SEARCH" on website) to obtain additional part information including price, inventory and certifications: [SMA Male to SMA Female Bulkhead Mount Using Flexible RG316 Coax Cable MTCA00037](https://www.milestek.com/undefined-mtca00037-p.aspx)

URL: <https://www.milestek.com/undefined-mtca00037-p.aspx>

The information contained in this document is accurate to the best of our knowledge and representative of the part described herein. It may be necessary to make modifications to the part and/or the documentation of the part, in order to implement improvements. MilesTek reserves the right to make such changes as required. Unless otherwise stated, all specifications are nominal. MilesTek does not make any representation or warranty regarding the suitability of the part described herein for any particular purpose, and MilesTek does not assume any liability arising out of the use of any part or documentation.

MTCA00037 CAD Drawing

SMA Male to SMA Female Bulkhead Mount Using Flexible RG316 Coax Cable



REVISIONS			
REV.	DESCRIPTION	DATE	APPROVED
A	INITIAL RELEASE	09/19/2019	SELLIS

<p>an INFINITE brand</p> <p>301 Leora Ln., Suite 100, Lewisville, TX 75056 Phone: 1.940.484.9400 1.866.524.1553 Fax: 1.972.394.7913 www.milestek.com e-mail: Customerfirst@milestek.com</p>		<p>THIRD-ANGLE PROJECTION</p> <p>THE INFORMATION AND DESIGN IN THIS DOCUMENT IS THE PROPERTY OF MILESTEK CORPORATION. ALL RIGHTS RESERVED.</p> <p>SHEET 1 OF 1</p> <p>SCALE N/A</p>		
<p>UNLESS OTHERWISE SPECIFIED LEADING DIMENSIONS ARE INCHES DIMENSIONS IN [] ARE MILLIMETERS</p> <p>TOLERANCES:</p> <p>X = ±2 [5.08] FRACTIONS ± 1/32</p> <p>XX = ±.02 [.51] ANGLES ± 1°</p> <p>XXX = ±.005 [.13]</p> <p>OVERALL CABLE LENGTH (L) TOLERANCES:</p> <p>L ≤ 12 [305] = ±1 [25] / -0</p> <p>12 [305] < L ≤ 60 [1524] = +2 [51] / -0</p> <p>60 [1524] < L ≤ 120 [3048] = +4 [102] / -0</p> <p>120 [3048] < L ≤ 300 [7620] = +6 [152] / -0</p> <p>300 [7620] < L = +9% / -0</p>	<p>SIZE A</p>	CAGE CODE 4Z977	DRAWN BY DFRISIELLO	PART NUMBER MTC00037
<p>ALL DIMENSIONS SHOWN ARE FOR REFERENCE ONLY.</p> <p>THESE COMMODITIES, TECHNOLOGY OR SOFTWARE WERE EXPORTED FROM THE UNITED STATES IN ACCORDANCE WITH THE EXPORT ADMINISTRATION REGULATIONS. DIVERSION CONTRARY TO U.S. LAW PROHIBITED.</p>		<p>REV A</p>		