



SMA Male Right Angle to SMA Male Right Angle Using Flexible RG316 Coax Cable

RF Cable Assemblies Technical Data Sheet

MTCA00036

Configuration

- Connector 1: SMA Male Right Angle
- Connector 2: SMA Male Right Angle
- Cable Type: RG316

Features

- Max Frequency 3 GHz
- FEP Jacket

Applications

- General Purpose
- Laboratory Use

Description

MilesTek's MTCA00036 coaxial cable assembly is a SMA male right angle to SMA male right angle using flexible RG316 coax cable. MilesTek cables are built using high quality materials and are tested to insure these assemblies meet all performance specifications. Coaxial cable assemblies are stocked in standard lengths and will ship same day. Custom lengths of this cable assembly are also available upon request. These assemblies are part of MilesTek's extensive portfolio of products that are in stock and ship same day.

Electrical Specifications

Description	Minimum	Typical	Maximum	Units
Frequency Range	DC		3	GHz
VSWR			1.4:1	
Capacitance		32 [104.99]		pF/ft [pF/m]

Specifications by Frequency

Description	F1	F2	F3	F4	F5	Units
Frequency	0.05	0.1	0.4	1	3	GHz
Insertion Loss (Typ.)	0.075	0.11	0.21	0.38	0.58	dB/ft
	0.25	0.36	0.69	1.25	1.9	dB/m

Electrical Specification Notes:

Insertion Loss does not include the loss of the connectors. Insertion Loss is estimated as 0.2 dB per connector.

Mechanical Specifications

Cable Assembly

Diameter	0.315 in [8 mm]
Weight	0.038 lbs [17.24 g]

Click the following link (or enter part number in "SEARCH" on website) to obtain additional part information including price, inventory and certifications: [SMA Male Right Angle to SMA Male Right Angle Using Flexible RG316 Coax Cable MTCA00036](#)



SMA Male Right Angle to SMA Male Right Angle Using Flexible RG316 Coax Cable

RF Cable Assemblies Technical Data Sheet

MTCA00036

Cable

Cable Type	RG316
Impedance	50 Ohms
Inner Conductor Type	Stranded
Inner Conductor Material and Plating	Copper Clad Steel, Silver
Dielectric Type	PTFE
Number of Shields	1
Shield Layer 1	Silver Plated Copper Braid
Jacket Material	FEP, Tan
Jacket Diameter	0.098 in [2.49 mm]

Connectors

Description	Connector 1	Connector 2
Type	SMA Male Right Angle	SMA Male Right Angle
Specification	MIL-STD-348A	MIL-STD-348A
Impedance	50 Ohms	50 Ohms
Contact Material and Plating	Brass, Gold	Brass, Gold
Contact Plating Specification	50µ in. minimum	50µ in. minimum
Dielectric Type	Teflon	Teflon
Body Material and Plating	Brass, Nickel	Brass, Nickel
Body Plating Specification	100µ in. minimum	100µ in. minimum
Hex Size	5/16 in	5/16 in
Torque	5 in-lbs [0.57 Nm]	5 in-lbs [0.57 Nm]

Compliance Certifications (see [product page](#) for current document)

Plotted and Other Data

Notes:

- Values at 25°C, sea level.

How to Order

Part Number Configuration:

MTCA00036

- **xx**

uu

Unit of Measure:

cm = Centimeters

<blank> = Inches

Length

Base Number

Example: MTCA00036-12 = 12 inches long cable
MTCA00036-100cm = 100 cm long cable

Click the following link (or enter part number in "SEARCH" on website) to obtain additional part information including price, inventory and certifications: [SMA Male Right Angle to SMA Male Right Angle Using Flexible RG316 Coax Cable MTCA00036](#)



SMA Male Right Angle to SMA Male Right Angle Using Flexible RG316 Coax Cable

RF Cable Assemblies Technical Data Sheet

MTCA00036

Our offering, used primarily in military, R&D and production applications, consists of a comprehensive line of MIL-STD-1553B data bus couplers, harnesses and cable assemblies, connectors and connector termination systems. MilesTek also offers expertise in manufacturing custom cable assemblies and harnesses.

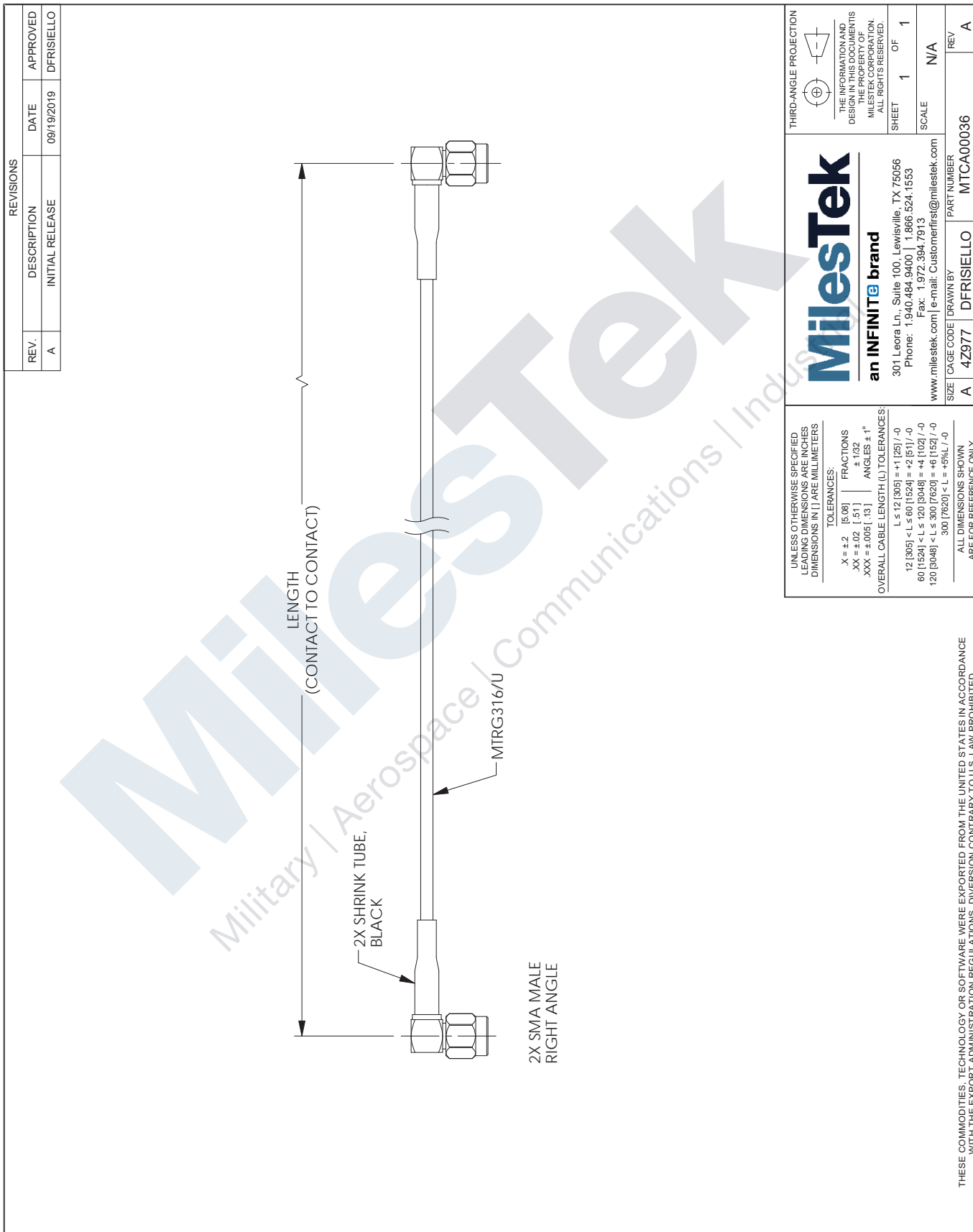
Click the following link (or enter part number in "SEARCH" on website) to obtain additional part information including price, inventory and certifications: [SMA Male Right Angle to SMA Male Right Angle Using Flexible RG316 Coax Cable MTCA00036](https://www.milestek.com/SMA-Male-SMA-Male-MTRG316U-MTCA00036-p.aspx)

URL: <https://www.milestek.com/SMA-Male-SMA-Male-MTRG316U-MTCA00036-p.aspx>

The information contained in this document is accurate to the best of our knowledge and representative of the part described herein. It may be necessary to make modifications to the part and/or the documentation of the part, in order to implement improvements. MilesTek reserves the right to make such changes as required. Unless otherwise stated, all specifications are nominal. MilesTek does not make any representation or warranty regarding the suitability of the part described herein for any particular purpose, and MilesTek does not assume any liability arising out of the use of any part or documentation.

MTCA00036 CAD Drawing

SMA Male Right Angle to SMA Male Right Angle Using Flexible RG316 Coax Cable



REVISIONS			
REV.	DESCRIPTION	DATE	APPROVED
A	INITIAL RELEASE	09/19/2019	DFRISIELLO

UNLESS OTHERWISE SPECIFIED LEADING DIMENSIONS ARE INCHES DIMENSIONS IN [] ARE MILLIMETERS

TOLERANCES:

X = ±.2	[5.08]	FRACTIONS	
.XX = ±.02	[.51]		± 1/32
.XXX = ±.005	[.13]	ANGLES ± 1°	

OVERALL CABLE LENGTH (L) TOLERANCES:

L ≤ 12 [305]	±.1 [25]	/-0
12 [305] < L ≤ 60 [1524]	±.2 [51]	/-0
60 [1524] < L ≤ 120 [3048]	±.4 [102]	/-0
120 [3048] < L ≤ 300 [7620]	±.6 [152]	/-0
300 [7620] < L	±.9 [L]	/-0

ALL DIMENSIONS SHOWN ARE FOR REFERENCE ONLY.

THESE COMMODITIES, TECHNOLOGY OR SOFTWARE WERE EXPORTED FROM THE UNITED STATES IN ACCORDANCE WITH THE EXPORT ADMINISTRATION REGULATIONS. DIVERSION CONTRARY TO U.S. LAW PROHIBITED.

THIRD-ANGLE PROJECTION

THE INFORMATION AND DESIGN IN THIS DOCUMENT IS THE PROPERTY OF MILESTEK CORPORATION. ALL RIGHTS RESERVED.

SHEET 1 OF 1

SCALE N/A

MilestTek
an INFINITE brand

301 Leora Ln., Suite 100, Lewisville, TX 75056
Phone: 1.940.484.9400 | 1.866.524.1553
Fax: 1.972.394.7913
www.milestek.com | e-mail: Customerfirst@milestek.com

SIZE	CAGE CODE	DRAWN BY	PART NUMBER
A	4Z977	DFRISIELLO	MTCA00036

REV A