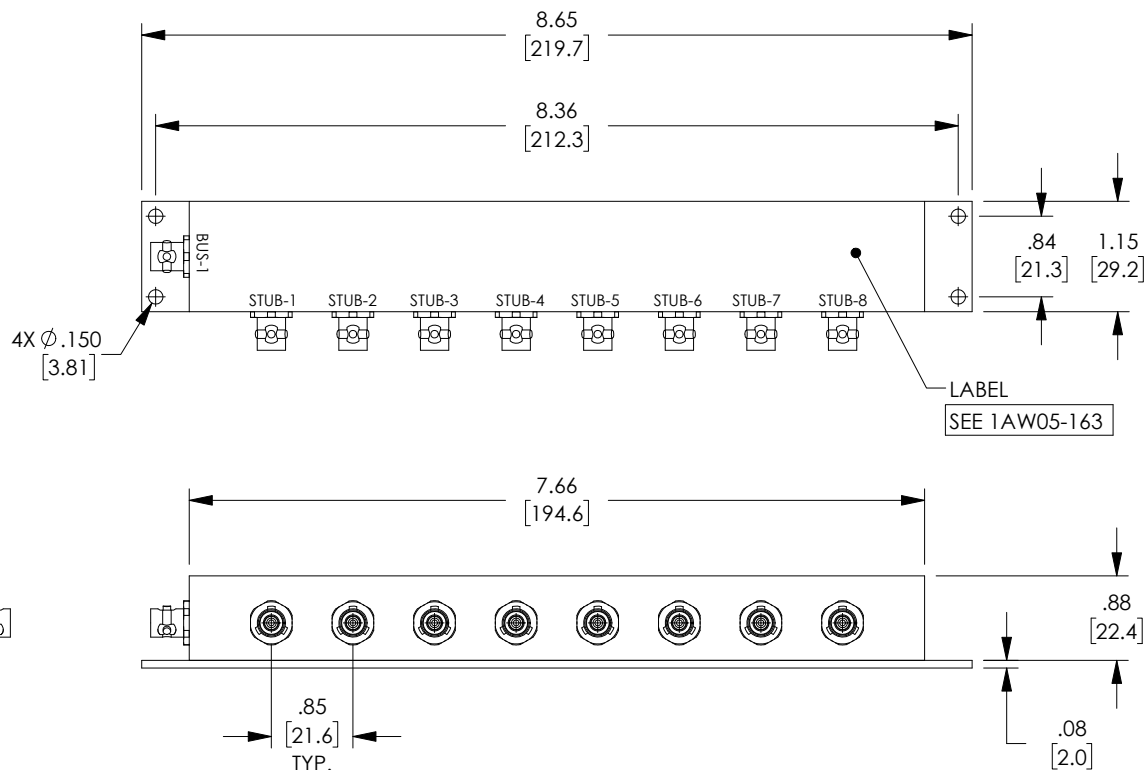
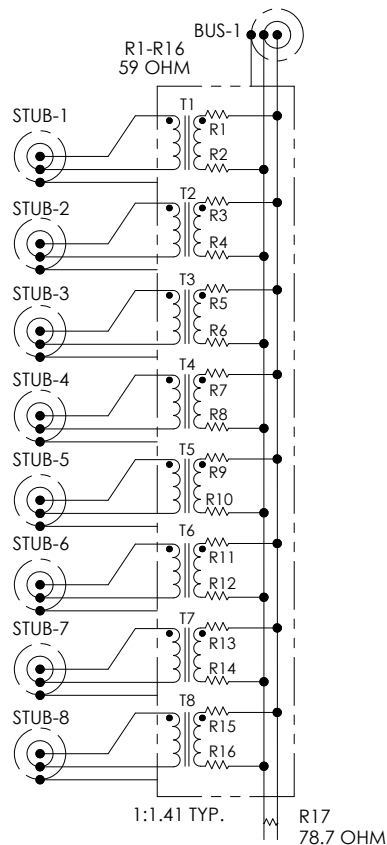


PROPRIETARY NOTICE
This document discloses confidential subject matter in which MilesTek Corporation and its subsidiaries have proprietary rights. Neither receipt nor possession thereof confers or transfers any right to reproduce or disclose the document, any part thereof, any information contained therein, or any physical article or device, or to practice any method or process, except by written permission from, or written agreement with MilesTek Corporation and its subsidiaries.

LEAD FREE SOLDER

| REVISIONS | | | |
|-----------|-----------------|------------|------------|
| REV | DESCRIPTION | DATE | APPROVED |
| A | INITIAL RELEASE | 05/28/2019 | DFRISIELLO |
| | | | |
| | | | |

WIRING MAP



1.0 ELECTRICAL SPECIFICATIONS: IAW MIL-STD-1553B

- | | |
|---------------------------|--|
| 1.1 DROOP | 20% MAXIMUM |
| 1.2 OVERSHOOT AND RINGING | +/- 1.0V PK-PK |
| 1.3 TRANSFORMER RATIO | 1:1.41 TURNS |
| 1.4 FAULT PROTECTION | 59 OHM +/-1%, 2 WATT PER MIL-R-39007 |
| 1.5 TERMINATING RESISTOR | 78.7 OHM +/-1%, 2 WATT PER MIL-R-39007 |
| 1.6 COMMON MODE REJECTION | -55dB @ 1 MHz |

2.0 MECHANICAL SPECIFICATIONS:

- 2.1 HOUSING: DIE CAST A360 ALUMINUM ALLOY
CLEAR ANODIZED AND PAINTED WITH TEXTURE.
BAKED ENAMEL, COLOR: BLUE
- 2.2 BASE PLATE: 6061-T6 ALUMINUM, SATIN FINISH.
- 2.3 CONNECTOR: TRS PLUG OR EQUIVALENT

3.0 ENVIRONMENTAL:

- 3.1 OPERATING TEMPERATURE: -55°C TO +125°C.

4.0 ALL MATERIALS USED ARE CERTIFIED ROHS COMPLIANT.

| | | | | | | | | | |
|--|--|--|--|------------|--|---|-----------------|---|--------------|
| UNLESS OTHERWISE SPECIFIED ALL DIMENSIONS ARE IN INCHES | | SIGNATURE | | DATE | | <div>MilesTek</div> <div>Military Aerospace Communications Industrial</div> | | MILESTEK CORPORATION 301 LEORA LANE, SUITE 100 LEWISVILLE, TX 75056 PHONE: (940) 484-9400 FAX: (940) 566-1047 | |
| OVERALL CABLE LENGTH TOLERANCE: ≤12 [305] = +1 [25] / -0 >12 [305] <40 [1024] = +2 [51] / -0 >40 [1024] <120 [3048] = +4 [102] / -0 >120 [3048] <300 [7620] = +6 [152] / -0 >300 [7620] = +5% / -0% | | DRAWN BY: DFRISIELLO | | 05/24/2019 | | | | | |
| | | CHECKED BY: MHEARN | | 05/28/2019 | | | | | |
| | | APPROVED BY: MHEARN | | 05/28/2019 | | | | | |
| ALL OTHER DIMENSIONAL TOLERANCES: X = ± 2 [5.08] XX = ± .02 [5.1] XXX = ± .005 [1.3] | | CONFIGURATION DETAILS OF UNDIMENSIONED FEATURES MAY VARY | | | | TITLE | | ROHS 8 STUB SUBMIN TLBJ TRS BOX COUPLER | |
| | | | | | | | | | |
| | | | | | | | | | |
| CUSTOMER REFERENCE DOCUMENT: | | CAGE CODE: 4Z977 | | | | SIZE | DRAWING NUMBER: | | REV. |
| | | | | | | A | MSX00080 | | A |
| | | | | | | SCALE: NTS | | | SHEET 1 OF 1 |