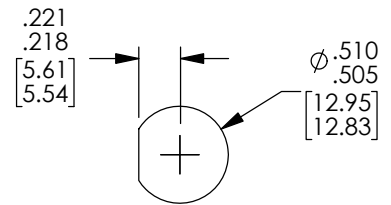
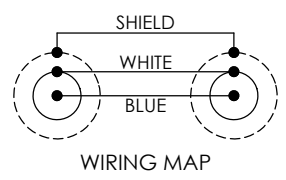
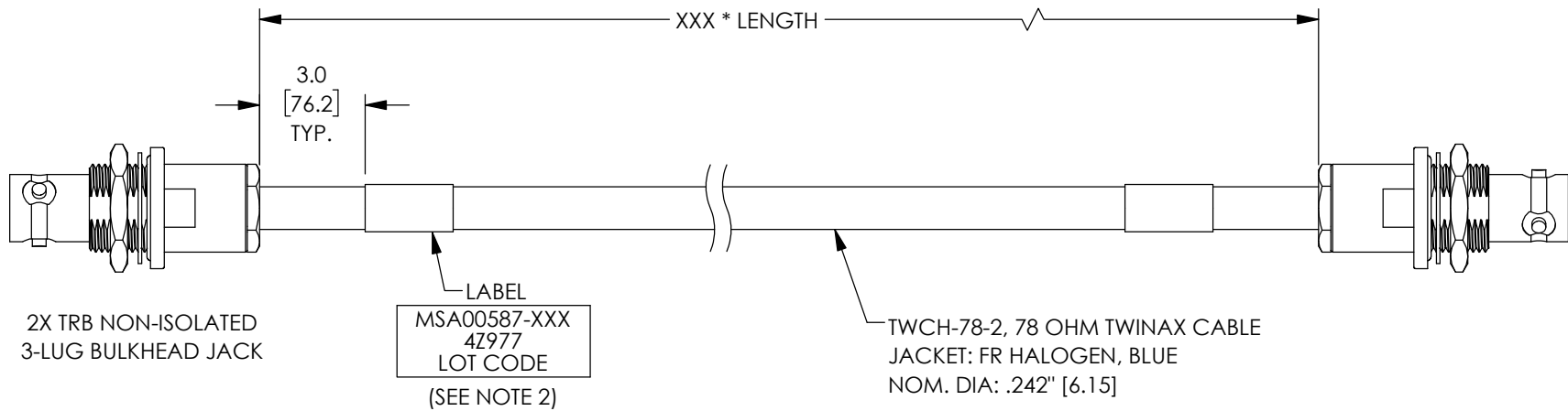


THE INFORMATION CONTAINED IN THIS DRAWING IS THE SOLE PROPERTY OF MILESTEK, INC.. ANY REPRODUCTION IN PART OR WHOLE WITHOUT THE WRITTEN PERMISSION OF MILESTEK, INC. IS PROHIBITED.

LEAD FREE SOLDER

REVISIONS			
REV	DESCRIPTION	DATE	APPROVED
A	INITIAL RELEASE	11/26/2019	MBLACKWOOD



RECOMMENDED
PANEL CUTOUT

NOTES:

- *XXX = LENGTH IN INCHES
*XXXM = LENGTH IN METERS
- CABLES 48" AND UNDER HAVE 1 LABEL CENTERED. CABLES OVER 48" HAVE 2 LABELS, ONE AT EACH END 3.0" FROM THE BACK OF THE CONNECTOR.
- CABLE ASSEMBLY SHALL BE TESTED FOR CONTINUITY.

UNLESS OTHERWISE SPECIFIED, DIMENSIONS ARE IN INCHES [mm] OVERALL CABLE LENGTH TOLERANCE: ≤12 [305] = +1 [25] / -0 >12 [305] ≤60 [1524] = +2 [51] / -0 >60 [1524] ≤120 [3048] = +4 [102] / -0 >120 [3048] ≤300 [7620] = +6 [152] / -0 >300 [7620] = +5% / -0 ALL OTHER DIMENSIONAL TOLERANCES: .X = ± .2 [5] FRACTIONS ± 1/32 .XX = ± .02 [5] ANGLES ± 1° .XXX = ± .005 [1.3]	APPROVALS	DATE	 an INFINIT [®] brand 301 Leora Ln., Suite 100, Lewisville, TX 75056 Phone: 1.940.484.9400 1.866.524.1553
	DRAWN BY DFRISIELLO	11/26/2019	
CONFIGURATION DETAILS OF UNDIMENSIONED FEATURES MAY VARY	CHECKED BY MGREENHILL	11/26/2019	PRODUCT DESCRIPTION LEAD FREE LSZH 0.242" O.D. 1553 TWNX NI BH J-J
THIRD-ANGLE PROJECTION 	APPROVED BY MBLACKWOOD	11/26/2019	SIZE A
COLOR VARIATIONS MAY OCCUR	SCALE: NONE		CAGE CODE 4Z977
DWG. NO. MSA00587		REV. A	
SCALE: MSA00587.SLDDRW		SHEET 1 OF 1	