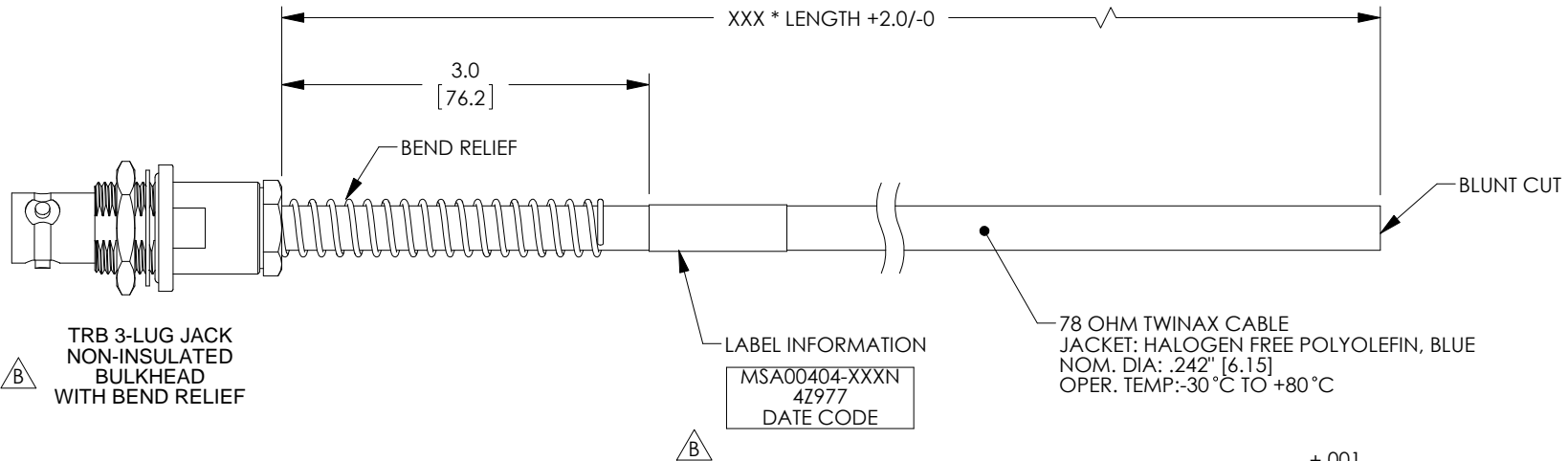


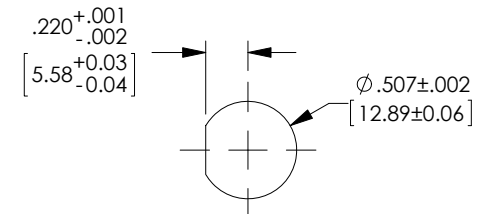
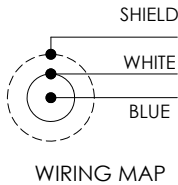
PROPRIETARY NOTICE

This document discloses confidential subject matter in which MilesTek Corporation and its subsidiaries have proprietary rights. Neither receipt nor possession thereof confers or transfers any right to reproduce or disclose the document, any part thereof, any information contained therein, or any physical article or device, or to practice any method or process, except by written permission from, or written agreement with MilesTek Corporation and its subsidiaries.

MSA00404-XXXX	REVISIONS		
	REV	DESCRIPTION	DATE
	A	INITIAL RELEASE	07/18/17
	B	ECN 8899: REVISE DESCRIPTION, TITLE, ADD DETAIL, DEL NOTE 2	8/29/17



LENGTH CODE CHART		
CABLE # & LENGTH	LENGTH SYMBOL	EXAMPLES OF PART # USED
MSA00404-XXN	WHERE XXX = LENGTH IN INCHES	MSA00404-12N (12.0 INCHES)



RECOMMENDED PANEL CUTOUT

NON CONTROLLED DRAWING IF PRINTED

NOTES:

- *XXX = LENGTH IN INCHES
- CABLE ASSEMBLY SHALL BE TESTED FOR CONTINUITY.

AS9100C CERTIFIED			CAD SYSTEM DRAWING - DO NOT REVISE MANUALLY			
			SIGNATURE	DATE		
			DRAWN BY: G.HUAN	07/18/17		
			CHECKED BY: M.HEARN	07/19/17	TITLE HF TWNX NI BHBR J-BLNT	
			APPROVED ENGINEERING: M.HEARN	07/19/17		
			APPROVED MANUFACTURING:		SIZE A	
			CUSTOMER APPROVAL			
			CAGE CODE: 4Z977		DRAWING NUMBER: MSA00404-XXXX	
DASH	NEXT ASSY	USED ON	CUSTOMER REFERENCE DOCUMENT:		SCALE: NTS	SHEET 1 OF 1
APPLICATION						

UNLESS OTHERWISE SPECIFIED ALL DIMENSIONS ARE IN INCHES

OVERALL CABLE LENGTH TOLERANCE:
 ≤ 12 [305] = ± 1 [25] / -0
 > 12 [305] ≤ 60 [1524] = ± 2 [51] / -0
 > 60 [1524] ≤ 120 [3048] = ± 4 [102] / -0
 > 120 [3048] ≤ 300 [7620] = ± 6 [152] / -0
 > 300 [7620] = $\pm 5\%$ / -0%

ALL OTHER DIMENSIONAL TOLERANCES:
 $X = \pm .2$ [5.08]
 $XX = \pm .02$ [5.1]
 $XXX = \pm .005$ [1.3]

MILESTEK CORPORATION
 1506 INTERSTATE 35 WEST
 DENTON, TX 76207
 PHONE: 866.524.1553
 FAX: 940.591.7086