

8

7

6

5

4

3

2

1

PROPRIETARY NOTICE

This document discloses confidential subject matter in which MilesTek Corporation and its subsidiaries have proprietary rights. Neither receipt nor possession thereof confers or transfers any right to reproduce or disclose the document, any part thereof, any information contained therein, or any physical article or device, or to practice any method or process, except by written permission from, or written agreement with MilesTek Corporation and its subsidiaries.

REV	DESCRIPTION	DATE	APPROVED
A	INITIAL RELEASE	06/27/17	G.HUAN
B	ECN 8899: REVISED NOTE 1 TO NOTE 2, DESCR., TITLE, ADD DETAIL	9/5/17	D.FRISIELLO

D

D

C

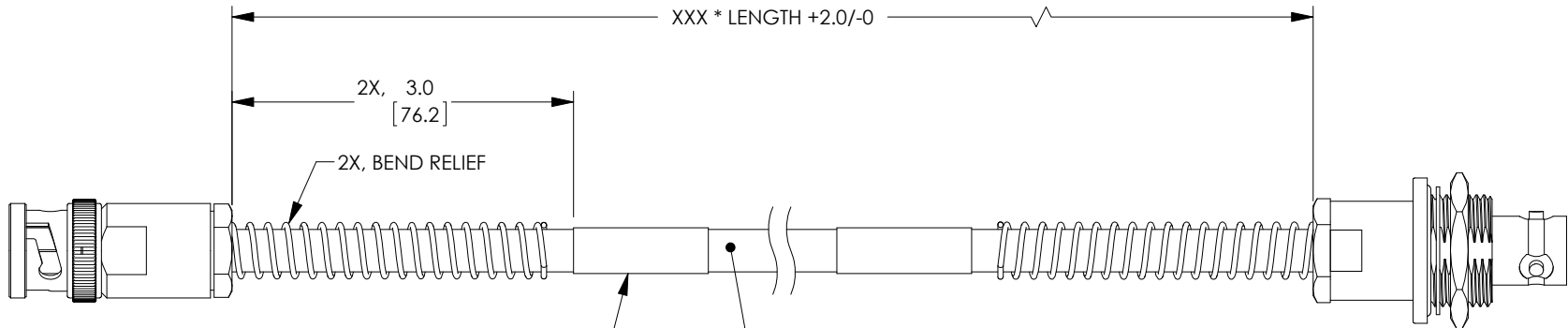
C

B

B

A

A



TRB 3-SLOT PLUG WITH BEND RELIEF



LABEL INFORMATION

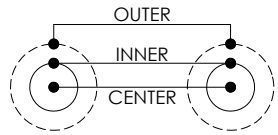
MSA00361-XXXX  
4Z977  
DATE CODE



(SEE NOTE 2)

322001, 50 OHM TRIAXIAL CABLE  
JACKET: HIGH TEMPERATURE FLUOROPOLYMER, CLEAR  
TEMPERATURE RANGE: -55° TO +200°C  
NOM. DIA: .236" [5.99]

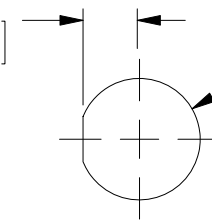
TRB 3-LUG JACK INSULATED BULKHEAD WITH BEND RELIEF



WIRING MAP

LENGTH CODE CHART		
CABLE # & LENGTH	LENGTH SYMBOL	EXAMPLES OF PART # USED
MSA00361-XXN	WHERE XXX = LENGTH IN INCHES	MSA00361-12N (12.0 INCHES)

.283<sup>+0.001</sup><sub>-.002</sub>  
[7.18<sup>+0.03</sup><sub>-0.04</sub>]



RECOMMENDED PANEL CUTOUT



NON CONTROLLED DRAWING IF PRINTED



NOTES:

- \*XXX = LENGTH IN INCHES
- CABLES 48" AND UNDER HAVE 1 LABEL CENTERED. CABLES OVER 48" HAVE 2 LABELS, ONE AT EACH END 3.0" FROM THE BACK OF THE CONNECTOR.
- CABLE ASSEMBLY SHALL BE TESTED FOR CONTINUITY.

AS9100C CERTIFIED			CAD SYSTEM DRAWING - DO NOT REVISE MANUALLY			
DASH	NEXT ASSY	USED ON	UNLESS OTHERWISE SPECIFIED ALL DIMENSIONS ARE IN INCHES	SIGNATURE	DATE	<p>MILESTEK CORPORATION 1506 INTERSTATE 35 WEST DENTON, TX 76207 PHONE: 866.524.1553 FAX: 940.591.7086</p>
			<p>OVERALL CABLE LENGTH TOLERANCE: ≤12 [305] = +1 [25] / -0 &gt;12 [305] ≤60 [1524] = +2 [51] / -0 &gt;60 [1524] ≤120 [3048] = +4 [102] / -0 &gt;120 [3048] ≤300 [7620] = +6 [152] / -0 &gt;300 [7620] = +5% / -0%</p> <p>ALL OTHER DIMENSIONAL TOLERANCES: X = ±.2 [5.08] .XX = ±.02 [51] .XXX = ±.005 [13]</p>	<p>DRAWN BY: G.HUAN</p> <p>CHECKED BY: M.HEARN</p> <p>APPROVED ENGINEERING: M.HEARN</p> <p>APPROVED MANUFACTURING:</p> <p>CUSTOMER APPROVAL</p>	<p>06/27/17</p> <p>06/28/17</p> <p>06/28/17</p>	
APPLICATION			CUSTOMER REFERENCE DOCUMENT:	CAGE CODE: 42977	SCALE: NTS	<p>DRAWING NUMBER: MSA00361-XXXX</p>
SHEET 1 OF 1						

8

7

6

5

4

3

2

1