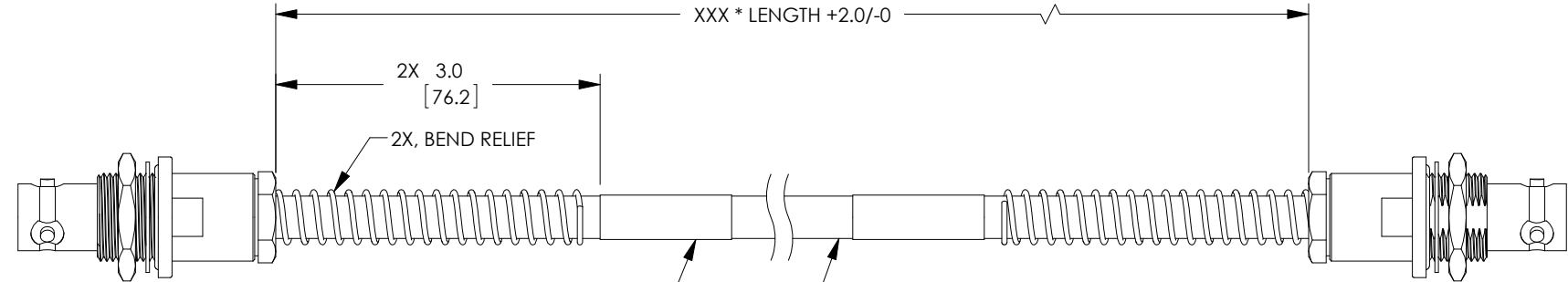


PROPRIETARY NOTICE

This document discloses confidential subject matter in which MilesTek Corporation and its subsidiaries have proprietary rights. Neither receipt nor possession thereof confers or transfers any right to reproduce or disclose the document, any part thereof, any information contained therein, or any physical article or device, or to practice any method or process, except by written permission from, or written agreement with MilesTek Corporation and its subsidiaries.

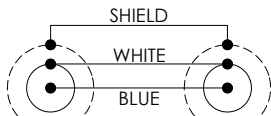
REVISIONS			
REV	DESCRIPTION	DATE	APPROVED
A	INITIAL RELEASE	06/30/17	J.YOU
B	ECN 8899: REVISED TITLE, DESCRIPTION, ADDED DETAIL	8/29/17	D.FRISIELLO



2X, TRB 3-LUG JACK
NON-INSULATED
BULKHEAD WITH
BEND RELIEF

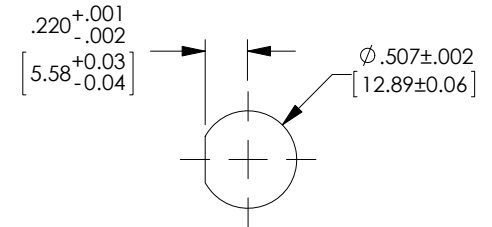
LABEL INFORMATION
MSA00238-XXXN
4Z977
DATE CODE
(SEE NOTE 2)

78 OHM TWINAX CABLE
JACKET: HALOGEN FREE POLYOLEFIN, BLUE
NOM. DIA: .242" [6.15]
OPER. TEMP: -30 °C TO +80 °C



WIRING MAP

LENGTH CODE CHART		
CABLE # & LENGTH	LENGTH SYMBOL	EXAMPLES OF PART # USED
MSA00238-XXXN	WHERE XXX = LENGTH IN INCHES	MSA00238-12N (12.0 INCHES)



RECOMMENDED
PANEL CUTOUT

NOTES:

- *XXX = LENGTH IN INCHES
- CABLES 48" AND UNDER HAVE 1 LABEL CENTERED. CABLES OVER 48" HAVE 2 LABELS, ONE AT EACH END 3.0" FROM THE BACK OF THE CONNECTOR.
- CABLE ASSEMBLY SHALL BE TESTED FOR CONTINUITY.

NON CONTROLLED DRAWING IF PRINTED

AS9100C CERTIFIED			CAD SYSTEM DRAWING - DO NOT REVISE MANUALLY			
			SIGNATURE	DATE		MILESTEK CORPORATION 1506 INTERSTATE 35 WEST DENTON, TX 76207 PHONE: 866.524.1553 FAX: 940.591.7086
			DRAWN BY: J.YOU	06/30/17		
			CHECKED BY: M.HEARN	06/30/17	TITLE	HF TWNX NI BHBR J-J
			APPROVED ENGINEERING: M.HEARN	06/30/17	SIZE A	
			APPROVED MANUFACTURING:		DRAWING NUMBER:	MSA00238-XXXN
			CUSTOMER APPROVAL		SCALE: NTS	
DASH	NEXT ASSY	USED ON	CUSTOMER REFERENCE DOCUMENT:		CAGE CODE: 4Z977	SHEET 1 OF 1
APPLICATION						

UNLESS OTHERWISE SPECIFIED ALL DIMENSIONS ARE IN INCHES

OVERALL CABLE LENGTH TOLERANCES:
 ≤ 12 [305] ≤ 60 [1524] = +2 [51] / -0
 > 60 [1524] ≤ 120 [3048] = +4 [102] / -0
 > 120 [3048] ≤ 300 [7620] = +6 [152] / -0
 > 300 [7620] = +5% / -0%

ALL OTHER DIMENSIONAL TOLERANCES:
 $X = \pm .2$ [5.08]
 $.XX = \pm .02$ [5.1]
 $.XXX = \pm .005$ [1.3]