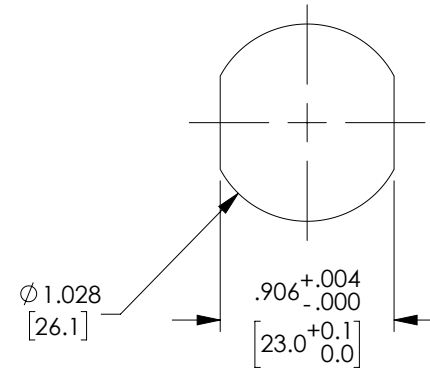
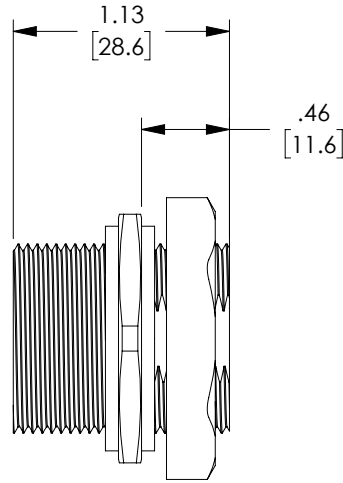


THE INFORMATION CONTAINED IN THIS DRAWING IS THE SOLE PROPERTY OF MILESTEK, INC. ANY REPRODUCTION IN PART OR WHOLE WITHOUT THE WRITTEN PERMISSION OF MILESTEK, INC. IS PROHIBITED.

REVISIONS			
REV	DESCRIPTION	DATE	APPROVED
A	INITIAL RELEASE	03/16/2020	MBLACKWOOD

WIRING MAP	
J1	J2
1	1
2	2
3	3
4	4
5	5
6	6
7	7
8	8
9	9
10	10
11	11
12	12
13	13
14	14
15	15
16	16
17	17
18	18
19	19
SHELL	SHELL

DUST CAP AND LANYARD NOT SHOWN



RECOMMENDED PANEL OPENING

NOTES:

MATERIAL:

MAIN BODY: PBT + GF, UL94V-0
 SHIELDED CASE: BRASS, NICKEL PLATED
 COUPLER HOUSING: ABS, UL94V-0
 JACK CONTACTS: PHOSPHOR BRONZE, 50μ GOLD PLATED.

PHYSICAL CHARACTERISTICS:

INSERTION LIFE: 10000 MATING CYCLES
 CONTACT WITHDRAW FORCE: 10N MIN
 PLUG MATING FORCE: 44N MAX.
 OPERATING TEMPERATURE RANGE: -10°C TO +60°C.
 STORAGE TEMPERATURE RANGE: -20°C TO +80°C.
 HUMIDITY: 10% ~ 90% RH
 IP RATING: IP67-WHEN DUST CAP IS ENGAGED.

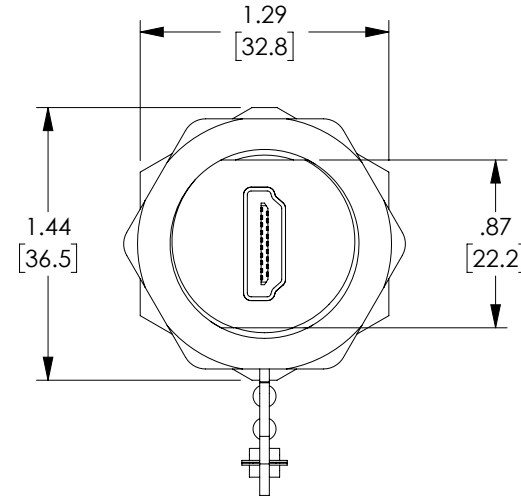
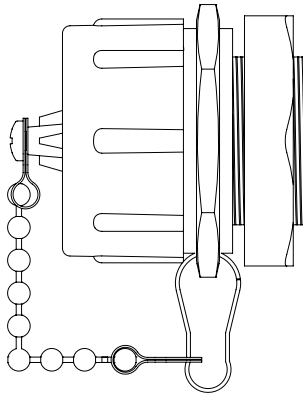
ELECTRICAL:

HDMI: 1.4
 INSULATION RESISTANCE:
 MATE 100 MΩ MIN 500V/DC
 UNMATE: 10 MΩ MIN 150V/DC
 DIELECTRIC WITHSTANDING VOLTAGE: 300 V AC.
 CONTACT CURRENT RATING: 0.5 A
 CONTACT RESISTANCE: 30 MΩ MAX

ALL DIMENSIONS ARE FOR REFERENCE ONLY.

PACKAGING:

ASSEMBLY SHALL BE INDIVIDUALLY PACKAGED IN ACCORDANCE WITH L-COM SPECIFICATION PS-0031.



UNLESS OTHERWISE SPECIFIED, DIMENSIONS ARE IN INCHES [mm] OVERALL CABLE LENGTH TOLERANCE: ≤12 [305] = +1 [25] / -0 >12 [305] ≤60 [1524] = +2 [51] / -0 >60 [1524] ≤120 [3048] = +4 [102] / -0 >120 [3048] ≤300 [7620] = +6 [152] / -0 >300 [7620] = +5% / -0 ALL OTHER DIMENSIONAL TOLERANCES: .X = ± .2 [5] FRACTIONS ± 1/32 .XX = ± .02 [.5] ANGLES ± 1° .XXX = ± .005 [.13]	APPROVALS	DATE	301 Leora Ln., Suite 100, Lewisville, TX 75056 Phone: 1.940.484.9400 1.866.524.1553	
	DRAWN BY MVEERAPPAN	03/16/2020		CATEGORY TELECOM/MODULAR
	CHECKED BY JLABOY	03/16/2020		
	APPROVED BY DFRISIELLO	03/16/2020		
THIRD-ANGLE PROJECTION	CONFIGURATION DETAILS OF UNDIMENSIONED FEATURES MAY VARY	PRODUCT DESCRIPTION WATERPROOF HDMI INDUSTRIAL COUPLER	SCALE: NONE CAD FILE: MMIC00009.SLDDRW SHEET 1 OF 1	
	COLOR VARIATIONS MAY OCCUR	SIZE A CAGE CODE 4Z977 ITEM NO. MMIC00009 REV. A		