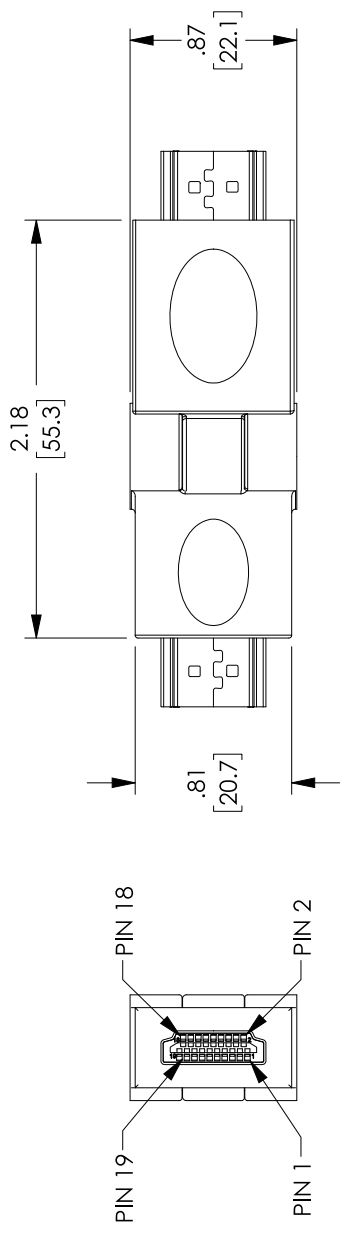


8 7 6 5 4 3 2 1

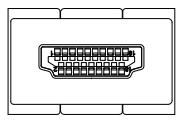
PROPRIETARY NOTICE

This document discloses confidential subject matter in which MilesTek Corporation and its subsidiaries have proprietary rights. Neither receipt nor possession thereof confers or transfers any right to reproduce or disclose the content or any part thereof, or to practice any method or process, except by written permission from, or written agreement with MilesTek Corporation and its subsidiaries.

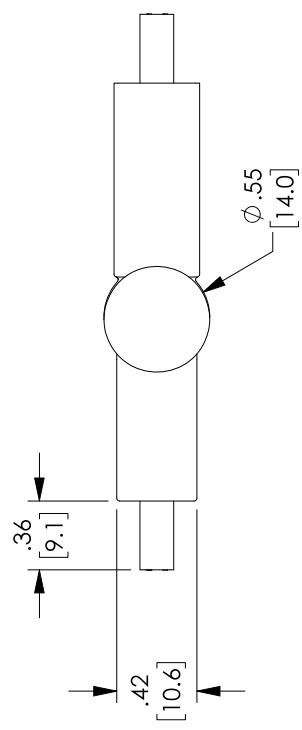
D C B A



"P1"
HDMI MALE
CONNECTOR
GLOD PLATED PINS



WIRING MAP	
"P1"	"P2"
1	1
2	2
3	3
4	4
5	5
6	6
7	7
8	8
9	9
10	10
11	11
12	12
13	13
14	14
15	15
16	16
17	17
18	18
19	19
SHIELD	SHIELD



NOTES:

- ELECTRICAL:
VOLTAGE TEST: DC300V 10MS
INSULATION RESISTANCE: 5.0M OHM/MIN.
CONDUCTOR RESISTANCE: 5.0 OHM/MAX.
- 1. ALL DIMENSIONS ARE FOR REFERENCE ONLY.
- 2. ADAPTER SHALL BE TESTED FOR CONTINUITY.
- 3. ADAPTER SHALL BE INDIVIDUALLY PACKAGED IN ACCORDANCE WITH SPECIFICATION PS-0054.

REGULATORY COMPLIANCE:
EU RoHS DIRECTIVE (MOST RECENT RELEASED VERSION)

REV	DESCRIPTION	DATE	APPROVED
A	REV A DRAWING RELEASED	05/15/2019	DFRIBIELLO

		MILESTEK CORPORATION 3011 PENNY LANE, SUITE 100 FARMINGTON, CT 06031 PHONE: (949) 484-9400 FAX: (949) 564-1047	
TITLE HDMI BENDABLE ADAPTER M-M		REV. A	
SIGNATURE DRAWN BY: CHUAN CHECKED BY: DFRIBIELLO APPR'D BY: DFRIBIELLO		DATE 05/13/2019 05/14/2019 05/14/2019	
UNLESS OTHERWISE SPECIFIED ALL DIMENSIONS ARE IN INCHES OVERALL CABLE LENGTH TOLERANCE: $0-31.2 [0.05]$ = +.1 [2.5] / -0 $31.2-62.5 [800]$ = +.1 [2.5] / -0 $62.5-125 [1524]$ = +.1 [2.5] / -0 $125-191.2 [3078]$ = +.1 [2.5] / -0 $191.2-304.8 [5000]$ = +.1 [2.5] / -0 $304.8-609.6 [15240]$ = +.1 [2.5] / -0 $609.6-1219.2 [30780]$ = +.1 [2.5] / -0 $1219.2-3048 [76200]$ = +.1 [2.5] / -0 ALL OTHER DIMENSIONAL TOLERANCES: .XX = ±.01 [0.25] .XXX = ±.005 [0.13]		CONFIGURATION DETAILS OF UNDIMENSIONED FEATURES MAY VARY	
CUSTOMER REFERENCE DOCUMENT:		CAGE CODE: 4Z977	
SCALE: INTS		SHEET 1 OF 1	