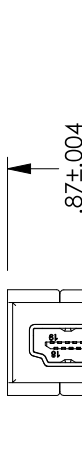
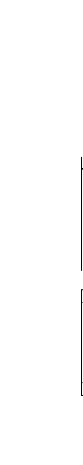


REV	DESCRIPTION	DATE	APPROVED
A	REV A DRAWING RELEASED	05/15/2019	DFRIBELLO

PROPRIETARY NOTICE
 This document discloses confidential subject matter in which MilesTek Corporation and its subsidiaries have proprietary rights. Neither receipt nor possession thereof confers or transfers any right to reproduce or disclose the contents of any physical article or device, or to practice any method or process, except by written permission from, or written agreement with MilesTek Corporation and its subsidiaries.



"J2"
 2X HDMI FEMALE
 CONNECTOR
 GOLD PLATED PINS

WIRING MAP	
"P1"	"P2"
1	1
2	2
3	3
4	4
5	5
6	6
7	7
8	8
9	9
10	10
11	11
12	12
13	13
14	14
15	15
16	16
17	17
18	18
19	19
SHIELD	SHIELD

NOTES:
 ELECTRICAL:
 VOLTAGE TEST: DC300V 10MS
 INSULATION RESISTANCE: 5.0M OHM/MIN.
 CONDUCTOR RESISTANCE: 5.0 OHM/MAX.

1. ALL DIMENSIONS ARE FOR REFERENCE ONLY.
 2. ADAPTER SHALL BE TESTED FOR CONTINUITY.
 3. ADAPTER SHALL BE INDIVIDUALLY PACKAGED IN ACCORDANCE WITH SPECIFICATION PS-0054.
- REGULATORY COMPLIANCE:**
 EU RoHS DIRECTIVE (MOST RECENT RELEASED VERSION)

SIGNATURE	DATE
CHUAN	05/10/2019
DFRIBELLO	05/11/2019
DFRIBELLO	05/11/2019

UNLESS OTHERWISE SPECIFIED ALL DIMENSIONS ARE IN INCHES
 OVERALL CABLE LENGTH TOLERANCE:
 >10 [254] ≤ 20 [508] = ±.01 [0.25]
 >20 [508] ≤ 50 [1270] = ±.02 [0.51]
 >50 [1270] ≤ 100 [2540] = ±.03 [0.76]
 >100 [2540] ≤ 500 [12700] = ±.05 [1.27]
 >500 [12700] = +5% / -3%
 ALL OTHER DIMENSIONAL TOLERANCES:
 .XX = ±.01 [0.25]
 .XXX = ±.005 [0.13]

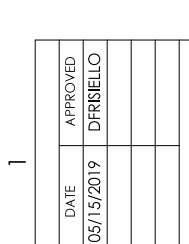
CUSTOMER REFERENCE DOCUMENT:
 CAGE CODE: 4Z977

CONFIGURATION DETAILS OF UNDIMENSIONED FEATURES MAY VARY

SCALE: NTS

DRAWING NUMBER:
MMIC00003

SHEET 1 OF 1



TITLE
 HDMI BENDABLE ADAPTER F-F

MILESTEK CORPORATION
 301 PENNSYLVANIA AVE., SUITE 100
 PHOENIX, AZ 85016
 PHONE: (602) 484-9400
 FAX: (602) 564-1047