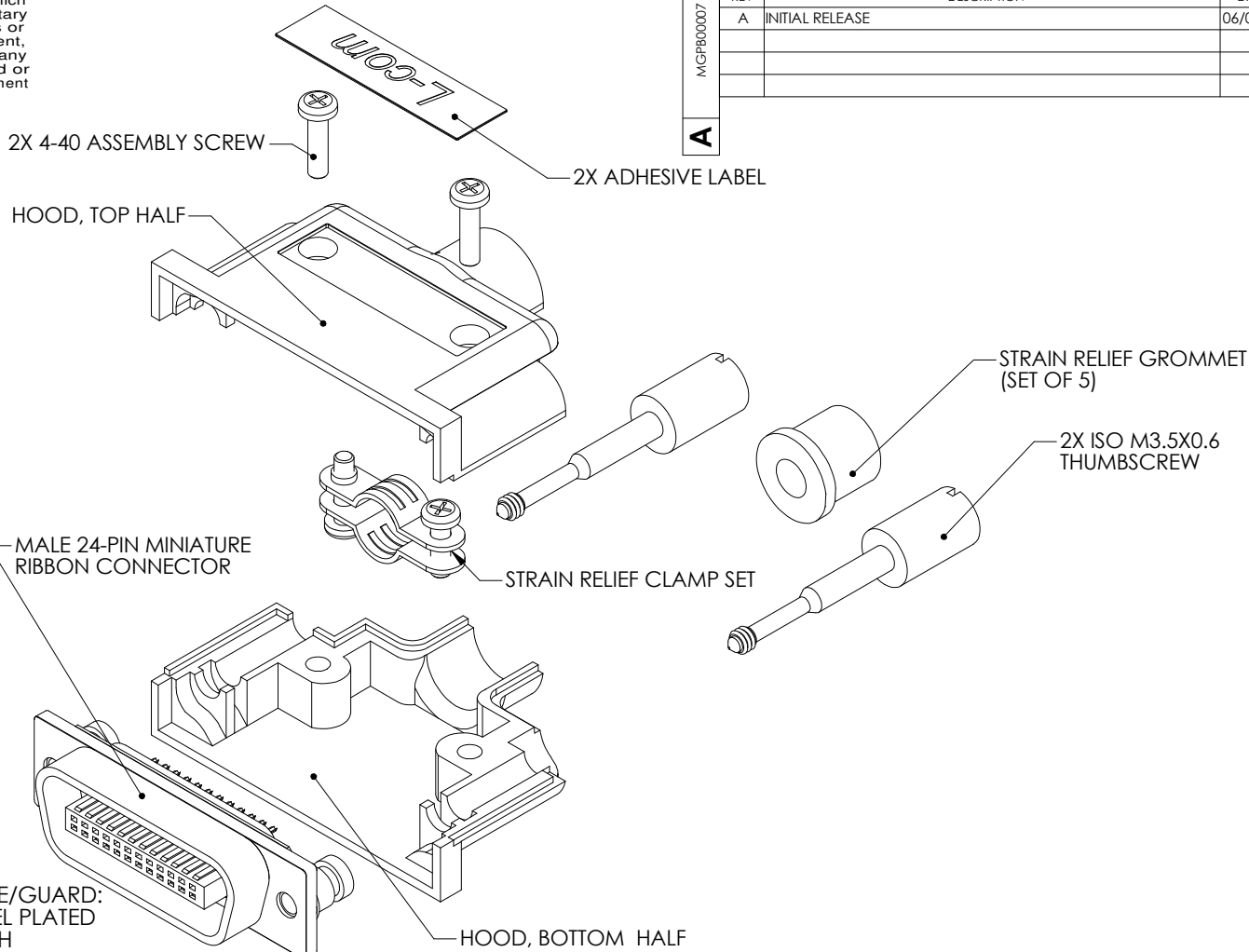


PROPRIETARY NOTICE

This document discloses confidential subject matter in which MilesTek Corporation and its subsidiaries have proprietary rights. Neither receipt nor possession thereof confers or transfers any right to reproduce or disclose the document, any part thereof, any information contained therein, or any physical article or device, or to practice any method or process, except by written permission from, or written agreement with MilesTek Corporation and its subsidiaries.



NOTES:

MATERIALS AND FINISHES:

HOOD HALVES AND CONNECTOR FLANGE/GUARD:
DIE-CAST ALUMINUM ALLOY, MATTE NICKEL PLATED
THUMBSCREWS: STEEL, BLACK OXIDE FINISH
ASSEMBLY SCREWS AND STRAIN RELIEF SET: STEEL, NICKEL PLATED
CONNECTOR INSULATOR: POLYBUTYLENE THERETHPHLATE, BLUE (94V-0)
CONNECTOR CONTACTS: BRASS, GOLD PLATED
CONNECTOR BUSHINGS: STEEL, NICKEL PLATED, TAPPED ISO M3.5X0.6
GROMMET: RUBBER (SET OF 5 I.D. SIZES)
LABELS: POLYESTER

TINNED SOLDER-CUP CONNECTOR TERMINALS ACCEPT 22AWG SOLID AND 24AWG STRANDED WIRE CONDUCTORS.

ASSEMBLED CONNECTOR MATES WITH ALL L-COM IEEE-488 FEMALE CONNECTORS AND MOST SIMILAR RECEPTACLES


PACKAGING:

INDIVIDUALLY PACKAGE IN ACCORDANCE WITH SPEC. PS-0054.

REGULATORY COMPLIANCE:

CE2011/65/EU(RoHS DIRECTIVE)

NON CONTROLLED DRAWING IF PRINTED

AS9100C CERTIFIED			CAD SYSTEM DRAWING - DO NOT REVISE MANUALLY			
			UNLESS OTHERWISE SPECIFIED ALL DIMENSIONS ARE IN INCHES OVERALL CABLE LENGTH TOLERANCE: ≤12 [305] = +1 [25] / -0 ≥12 [305] ≤60 [1524] = +2 [51] / -0 ≥60 [1524] ≤120 [3048] = +4 [102] / -0 ≥120 [3048] ≤300 [7620] = +6 [152] / -0 ≥300 [7620] = +5% / -0% ALL OTHER DIMENSIONAL TOLERANCES: X = ± .2 [5.08] XX = ± .02 [51] XXX = ±.005 [13]	SIGNATURE	DATE	 <div>MILESTEK CORPORATION 1506 INTERSTATE 35 WEST DENTON, TX 76207 PHONE: 866.524.1553 FAX: 940.591.7086</div>
				DRAWN BY: J.YOU	06/01/17	
				CHECKED BY: Brian G.	06/01/17	
				APPROVED ENGINEERING: S.PAN	06/01/17	
				APPROVED MANUFACTURING:		
			CUSTOMER APPROVAL			TITLE CB24SM CONNECTOR/HOOD KIT
					SIZE A	DRAWING NUMBER: MGPB00007
DASH	NEXT ASSY	USED ON	CUSTOMER REFERENCE DOCUMENT:	CAGE CODE: 42977	SCALE: NTS	SHEET 1 OF 1
APPLICATION						

UNLESS OTHERWISE SPECIFIED ALL DIMENSIONS ARE IN INCHES
OVERALL CABLE LENGTH TOLERANCE:
≤12 [305] = +1 [25] / -0
>12 [305] ≤60 [1524] = +2 [51] / -0
>60 [1524] ≤120 [3048] = +4 [102] / -0
>120 [3048] ≤300 [7620] = +6 [152] / -0
>300 [7620] = +5% / -0%
ALL OTHER DIMENSIONAL TOLERANCES:
.X = ±.2 [5.08]
.XX = ±.02 [5.1]
.XXX = ±.005 [13]

CUSTOMER REFERENCE DOCUMENT: