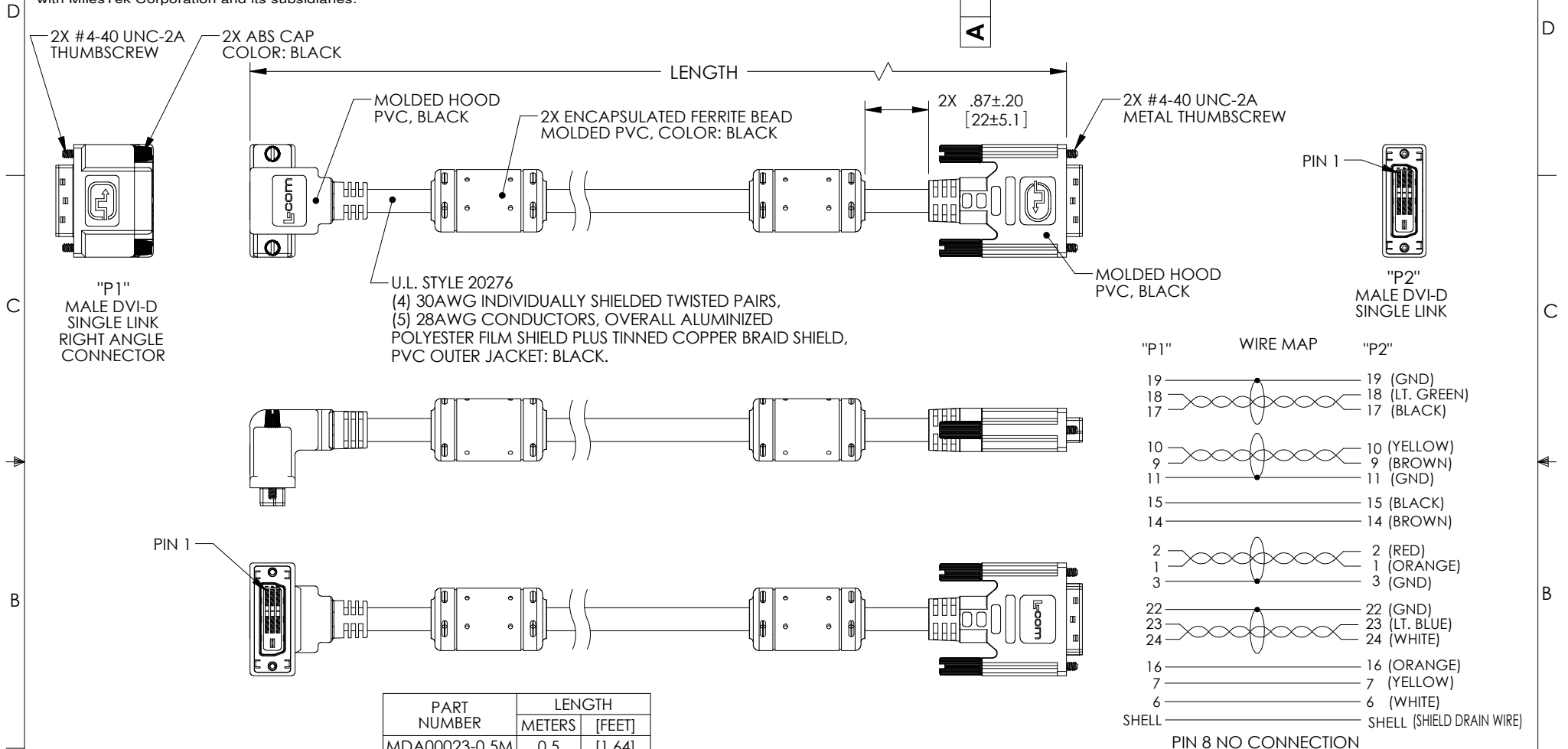


PROPRIETARY NOTICE

This document discloses confidential subject matter in which MilesTek Corporation and its subsidiaries have proprietary rights. Neither receipt nor possession thereof confers or transfers any right to reproduce or disclose the document, any part thereof, any information contained therein, or any physical article or device, or to practice any method or process, except by written permission from, or written agreement with MilesTek Corporation and its subsidiaries.

REVISONS			
REV	DESCRIPTION	DATE	APPROVED
A	INITIAL RELEASE	06/08/17	J.YOU




"P1"	WIRE MAP	"P2"
19		19 (GND)
18		18 (LT. GREEN)
17		17 (BLACK)
10		10 (YELLOW)
9		9 (BROWN)
11		11 (GND)
15		15 (BLACK)
14		14 (BROWN)
2		2 (RED)
1		1 (ORANGE)
3		3 (GND)
22		22 (GND)
23		23 (LT. BLUE)
24		24 (WHITE)
16		16 (ORANGE)
7		7 (YELLOW)
6		6 (WHITE)
SHELL		SHELL (SHIELD DRAIN WIRE)

PIN 8 NO CONNECTION

PART NUMBER	LENGTH	
	METERS	[FEET]
MDA00023-0.5M	0.5	[1.64]
MDA00023-1M	1.0	[3.28]
MDA00023-2M	2.0	[6.56]
MDA00023-3M	3.0	[9.84]
MDA00023-4M	4.0	[13.12]
MDA00023-5M	5.0	[16.41]

NON CONTROLLED DRAWING IF PRINTED

AS9100C CERTIFIED			CAD SYSTEM DRAWING - DO NOT REVISE MANUALLY			
DASH	NEXT ASSY	USED ON	UNLESS OTHERWISE SPECIFIED ALL DIMENSIONS ARE IN INCHES OVERALL CABLE LENGTH TOLERANCE: ≤12 [305] = +1 [25] / -0 >12 [305] ≤60 [1524] = +2 [51] / -0 >60 [1524] ≤120 [3048] = +4 [102] / -0 >120 [3048] ≤300 [7620] = +6 [152] / -0 >300 [7620] = +5% / -0% ALL OTHER DIMENSIONAL TOLERANCES: X = ±.2 [5.08] XX = ±.02 [5.1] XXX = ±.005 [1.3]	SIGNATURE	DATE	<div><div>MILESTEK CORPORATION 1506 INTERSTATE 35 WEST DENTON, TX 76207 PHONE: 866.524.1553 FAX: 940.591.7086</div></div> <div>TITLE CBL DVI-D SL RA</div> <div><div>SIZE</div><div>A</div><div>DRAWING NUMBER: MDA00023</div></div> <div><div>SCALE: NTS</div><div>SHEET 1 OF 1</div></div>
				DRAWN BY: J.YOU	06/08/17	
				CHECKED BY: B.GATES	06/08/17	
				APPROVED ENGINEERING: S.PAN	06/08/17	
				APPROVED MANUFACTURING:		
CUSTOMER REFERENCE DOCUMENT:			CAGE CODE: 42977			

- NOTES:**
1. CABLE ASSEMBLY TO BE TESTED FOR CONTINUITY
 2. CABLE ASSEMBLY TO BE INDIVIDUALLY PACKAGED IN ACCORDANCE WITH SPEC. PS-0054.
 3. DUST COVERS INSTALLED FOR SHIPPING (NOT SHOWN).
- REGULATORY COMPLIANCE:**
CE2011/65/EU(RoHS DIRECTIVE)