

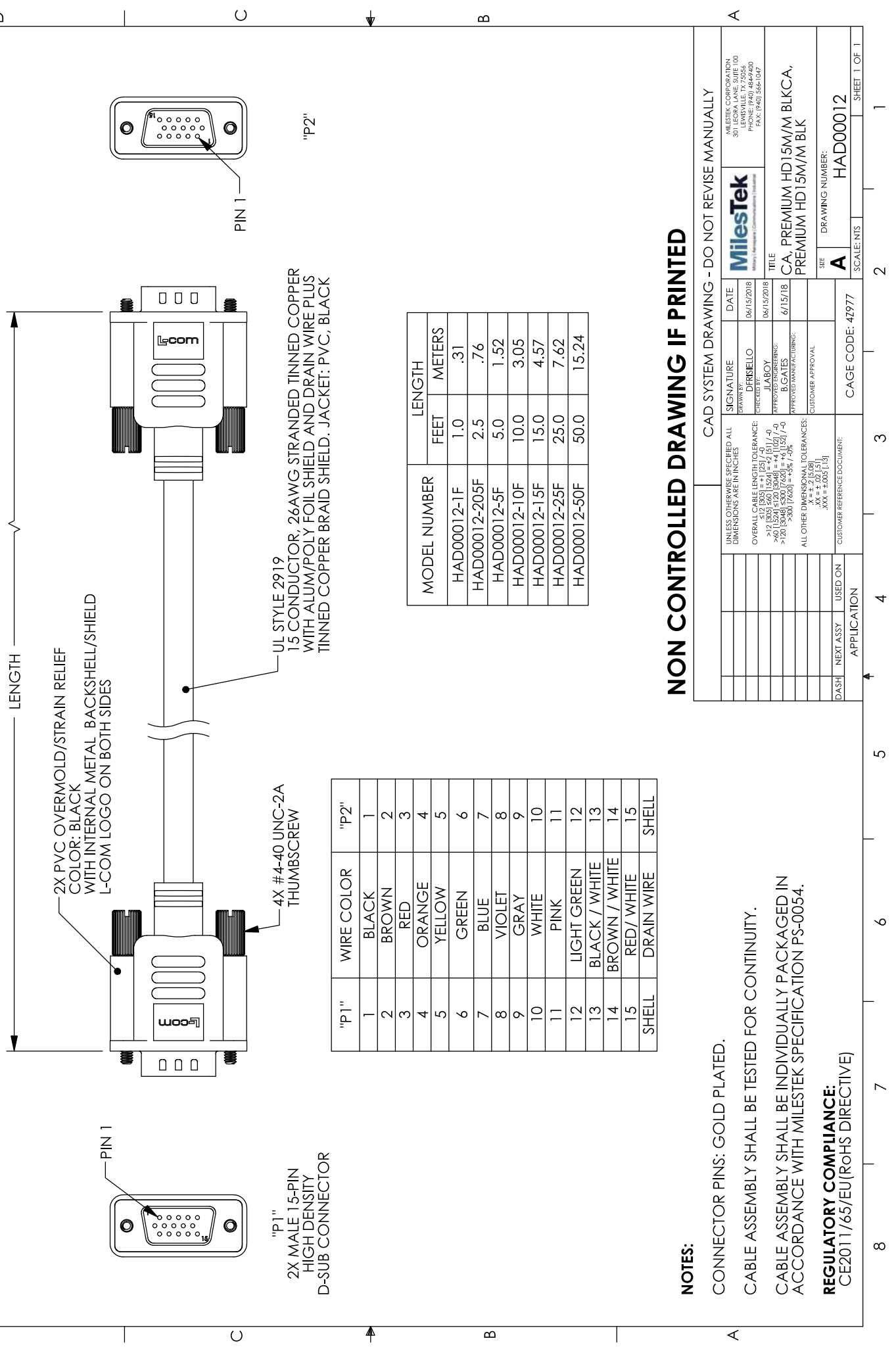
REV	DESCRIPTION	DATE	APPROVED
A	REV A DRAWING RELEASED	06/20/2018	DFRRIELLO

REV	DESCRIPTION	DATE	APPROVED
A	REV A DRAWING RELEASED	06/20/2018	DFRRIELLO

REV	DESCRIPTION	DATE	APPROVED
A	REV A DRAWING RELEASED	06/20/2018	DFRRIELLO

PROPRIETARY NOTICE

This document discloses confidential subject matter in which Milestek Corporation and its subsidiaries have proprietary rights. Neither receipt nor possession thereof confers or warrants the right to reproduce, copy, or disseminate in any form or by any means, any information contained therein, or any physical article or device, or to practice any method or process, except by written permission from, or written agreement with Milestek Corporation and its subsidiaries.



"P1"
2X MALE 15-PIN
HIGH DENSITY
D-SUB CONNECTOR

"P2"
2X PVC OVERMOLD/STRAIN RELIEF
COLOR: BLACK
WITH INTERNAL METAL BACKSHELL/SHIELD
L-COM LOGO ON BOTH SIDES

4X #4-40 UNC-2A
THUMBSCREW

UL STYLE 2919
15 CONDUCTOR, 26AWG STRANDED TINNED COPPER
WITH ALUM/POLY FOIL SHIELD AND DRAIN WIRE PLUS
TINNED COPPER BRAID SHIELD. JACKET: PVC, BLACK

MODEL NUMBER	LENGTH	
	FEET	METERS
HAD00012-1F	1.0	.31
HAD00012-205F	2.5	.76
HAD00012-5F	5.0	1.52
HAD00012-10F	10.0	3.05
HAD00012-15F	15.0	4.57
HAD00012-25F	25.0	7.62
HAD00012-50F	50.0	15.24

"P1"	WIRE COLOR	"P2"
1	BLACK	1
2	BROWN	2
3	RED	3
4	ORANGE	4
5	YELLOW	5
6	GREEN	6
7	BLUE	7
8	VIOLET	8
9	GRAY	9
10	WHITE	10
11	PINK	11
12	LIGHT GREEN	12
13	BLACK / WHITE	13
14	BROWN / WHITE	14
15	RED / WHITE	15
SHELL	DRAIN WIRE	SHELL

NOTES:

CONNECTOR PINS: GOLD PLATED.

CABLE ASSEMBLY SHALL BE TESTED FOR CONTINUITY.

CABLE ASSEMBLY SHALL BE INDIVIDUALLY PACKAGED IN ACCORDANCE WITH MILESTEK SPECIFICATION PS-0054.

REGULATORY COMPLIANCE:
CE2011/65/EU(RoHS DIRECTIVE)

CAD SYSTEM DRAWING - DO NOT REVISE MANUALLY

SIGNATURE	DATE
DFRRIELLO	06/15/2018

UNLESS OTHERWISE SPECIFIED ALL DIMENSIONS ARE IN INCHES	DATE
OVERALL CABLE LENGTH TOLERANCE: ≤17 (305) ≤60 (1524) = +0 (0) / -0 ≤17 (305) ≤60 (1524) = +0 (0) / -0 >17 (305) ≤60 (1524) = +0 (0) / -0 >60 (1524) ≤120 (3048) = +0 (0) / -0 >120 (3048) ≤240 (6096) = +0 (0) / -0 >240 (6096) ≤300 (7620) = +3% / -0% ALL OTHER DIMENSIONAL TOLERANCES: X ± .01 (0.25) Y ± .01 (0.25) Z ± .01 (0.25)	06/15/2018

SIGNATURE	DATE
DFRRIELLO	06/15/2018

TITLE	DATE
CA, PREMIUM HD15M/M BLKCA, PREMIUM HD15M/M BLK	6/15/18

SHEET	DRAWING NUMBER:
A	HAD00012

CAGE CODE:	SCALE:
42977	1:1

APPLICATION	SHEET
1	1 OF 1

APPLICATION	SHEET
1	1 OF 1

Milestek Corporation
301 Lehigh Valley Blvd
Allentown, PA 18106
PHONE: (610) 484-4400
FAX: (610) 564-1047