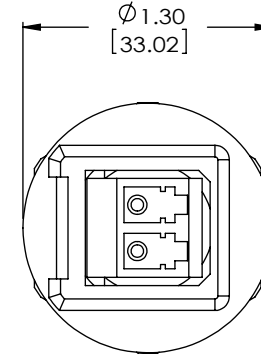
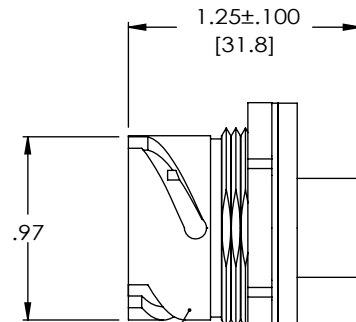
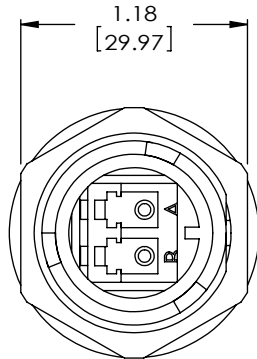


PROPRIETARY NOTICE

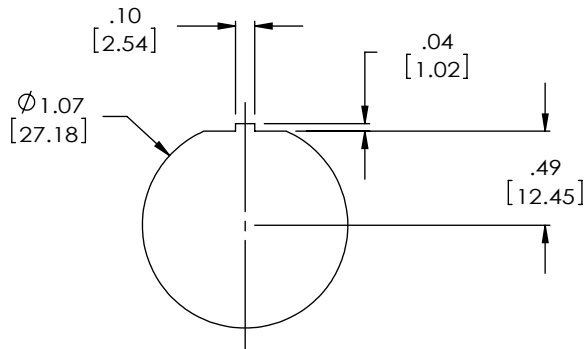
This document discloses confidential subject matter in which MilesTek Corporation and its subsidiaries have proprietary rights. Neither receipt nor possession thereof confers or transfers any right to reproduce or disclose the document, any part thereof, any information contained therein, or any physical article or device, or to practice any method or process, except by written permission from, or written agreement with MilesTek Corporation and its subsidiaries.



ADAPTER HOUSING

FACEPLATE SEAL

JAM NUT



RECOMMENDED PANEL OPENING

PANEL THICKNESS: .035" - .120"

NOTES:

1. MATERIAL:
JACK HOUSING; GLASS FILLED PBT
ALIGNMENT SLEEVE; CERAMIC

2. PANEL NUT MUST BE TIGHTENED 15-20 IN. LBS

INDIVIDUALLY PACKAGE IN ACCORDANCE WITH SPEC. PS-0054.

REGULATORY COMPLIANCE:
CE2011/65/EU(RoHS DIRECTIVE)


FYC00006

A

REVISIONS

REV	DESCRIPTION	DATE	APPROVED
INITIAL RELEASE		06/15/17	G.HUAN

NON CONTROLLED DRAWING IF PRINTED

AS9100C CERTIFIED			CAD SYSTEM DRAWING - DO NOT REVISE MANUALLY			
			SIGNATURE	DATE	 MILESTEK CORPORATION 1506 INTERSTATE 35 WEST DENTON, TX 76207 PHONE: 866.524.1553 FAX: 940.591.7086	
			DRAWN BY: G.HUAN	06/15/17		
			CHECKED BY: D. GUITTADAURO	06/16/17	TITLE INDUSTRIAL ADAPTER;OUTLET SIDE;LC FIBER	
			APPROVED ENGINEERING: S.PAN	06/16/17		
			APPROVED MANUFACTURING:		SIZE DRAWING NUMBER: A FYC00006	
			CUSTOMER APPROVAL			
			CAGE CODE: 42977		SCALE: NTS	SHEET 1 OF 1
DASH	NEXT ASSY	USED ON	APPLICATION			

UNLESS OTHERWISE SPECIFIED ALL DIMENSIONS ARE IN INCHES
OVERALL CABLE LENGTH TOLERANCE:
≤12 [305] = +1 [25] / -0
>12 [305] ≤60 [1524] = +2 [51] / -0
>60 [1524] ≤120 [3048] = +4 [102] / -0
>120 [3048] ≤300 [7620] = +6 [152] / -0
>300 [7620] = +5% / -0%
ALL OTHER DIMENSIONAL TOLERANCES:
.X = ±.2 [5.08]
.XX = ±.02 [1.51]
.XXX = ±.005 [1.3]

CUSTOMER REFERENCE DOCUMENT: