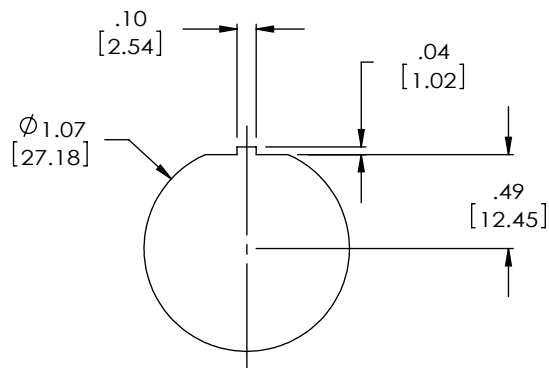
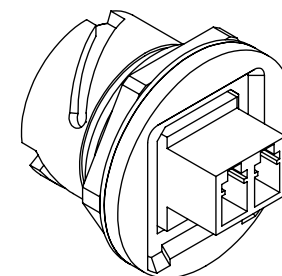
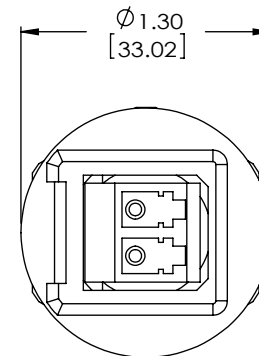
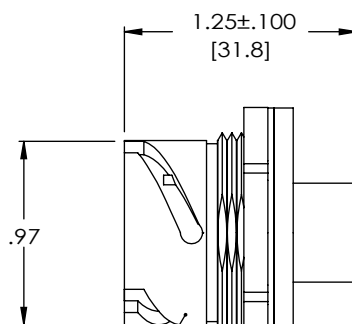


This document discloses confidential subject matter in which MilesTek Corporation and its subsidiaries have proprietary rights. Neither receipt nor possession thereof confers or transfers any right to reproduce or disclose the document, any part thereof, any information contained therein, or any physical article or device, or to practice any method or process, except by written permission from, or written agreement with MilesTek Corporation and its subsidiaries.

FYC00005

PANEL THICKNESS: .035" - .120"

1. MATERIAL:
 - 1.1 JACK HOUSING; GLASS FILLED PBT
 - 1.2 ALIGNMENT SLEEVE; PHOS BRONZE
2. PANEL NUT MUST BE TIGHTENED 15-20 IN. LBS
3. COMPONENT SHALL BE INDIVIDUALLY PACKAGED IN ACCORDANCE WITH SPEC. PS-0054.

NON CONTROLLED DRAWING IF PRINTED

A