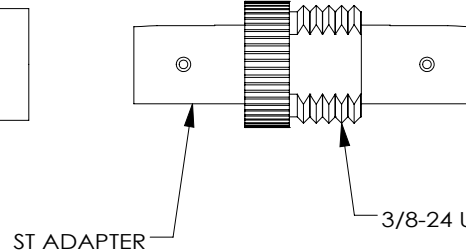
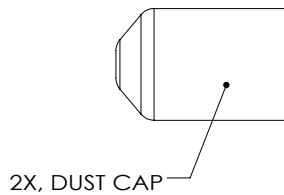
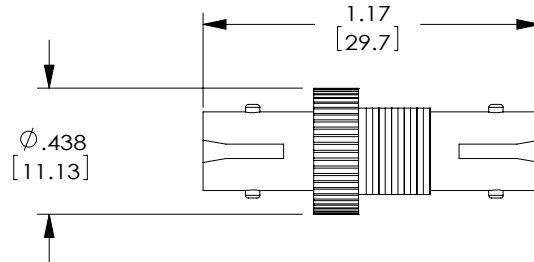


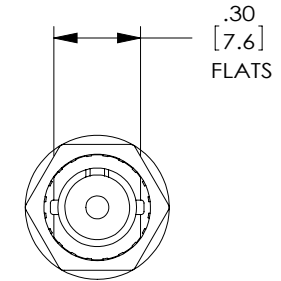
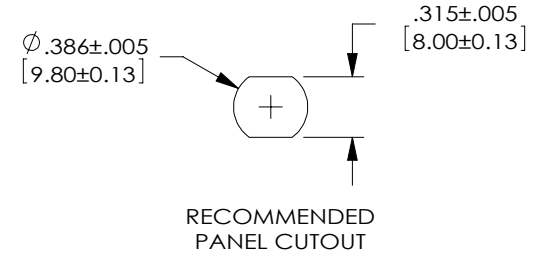
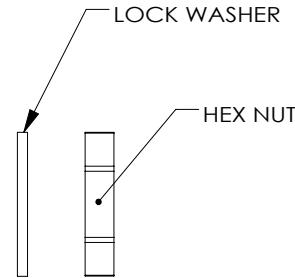
PROPRIETARY NOTICE

This document discloses confidential subject matter in which MilesTek Corporation and its subsidiaries have proprietary rights. Neither receipt nor possession thereof confers or transfers any right to reproduce or disclose the document, any part thereof, any information contained therein, or any physical article or device, or to practice any method or process, except by written permission from, or written agreement with MilesTek Corporation and its subsidiaries.

MODEL NUMBER	FOA-M83522-YB	FOA-M83522-YS
DESCRIPTION	ST/ST ADAPTER SINGLE MODE, AND MULTIMODE	ST/ST ADAPTER SINGLE MODE, AND MULTIMODE
MATERIAL	BRASS	STAINLESS STEEL
FINISH	NICKEL PLATE	PASSIVATED
SLEEVE	ZIRCONIA	ZIRCONIA
HARDWARE	SST, PASSIVATED	SST, PASSIVATED
DUST CAP	PVC	PVC



SLEEVE TYPE: 2.5 mm I.D., SOLID SLEEVE



NOTES:

DUST CAPS ARE INSTALLED FOR SHIPMENT.

COMPONENTS COME UNASSEMBLED AND SHALL BE INDIVIDUALLY PACKAGED IN ACCORDANCE WITH SPEC. PS-0054.

REGULATORY COMPLIANCE:
CE2011/65/EU(RoHS DIRECTIVE)

NON CONTROLLED DRAWING IF PRINTED

AS9100C CERTIFIED			CAD SYSTEM DRAWING - DO NOT REVISE MANUALLY			
<p>UNLESS OTHERWISE SPECIFIED ALL DIMENSIONS ARE IN INCHES</p> <p>OVERALL CABLE LENGTH TOLERANCE: ≤12 [305] = +1 [25] / -0 >12 [305] ≤60 [1524] = +2 [51] / -0 >60 [1524] ≤120 [3048] = +4 [102] / -0 >120 [3048] ≤300 [7620] = +6 [152] / -0 >300 [7620] = +5% / -0%</p> <p>ALL OTHER DIMENSIONAL TOLERANCES: .X = ±.2 [5.08] .XX = ±.02 [1.51] .XXX = ±.005 [1.3]</p>			SIGNATURE		DATE	<p>MilesTek</p> <p>MILESTEK CORPORATION 1506 INTERSTATE 35 WEST DENTON, TX 76207 PHONE: 866.524.1553 FAX: 940.591.7086</p>
			DRAWN BY:			
			CHECKED BY:			
			APPROVED ENGINEERING:			
			APPROVED MANUFACTURING:			
DASH			NEXT ASSY		USED ON	<p>CUSTOMER REFERENCE DOCUMENT:</p>
APPLICATION			CAGE CODE: 4Z977			
			TITLE		<p>SIZE</p> <p>DRAWING NUMBER:</p>	
			MIL ST ADPT MM / SM		<p>A</p> <p>SCALE: NTS</p>	
			SHEET 1 OF 1			