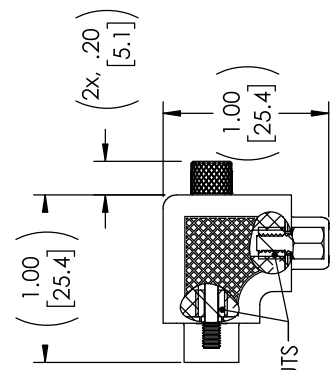
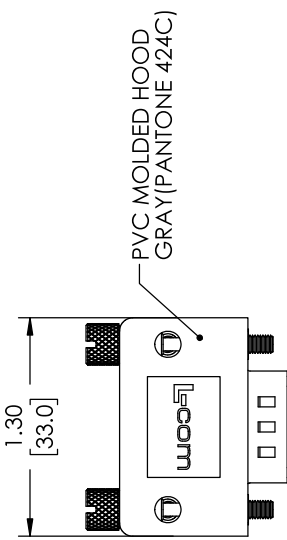
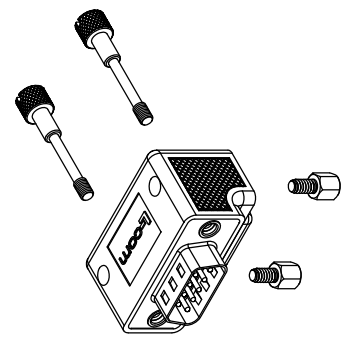


**PROPRIETARY NOTICE**  
 This document discloses confidential subject matter in which MilesTek Corporation and its subsidiaries have proprietary rights. Neither receipt nor possession thereof confers or grants any right, title, or interest in the product or any part thereof, and no information contained therein, or any physical article or device, or to practice any method or process, except by written permission from, or written agreement with MilesTek Corporation and its subsidiaries.

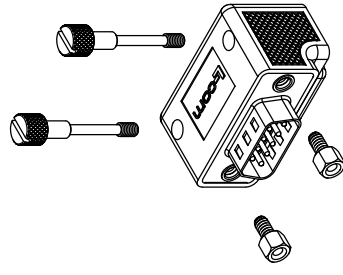
WIRING MAP	
"P1"	"J1"
1	1
2	2
3	3
4	4
5	5
6	6
7	7
8	8
9	9
SHELL	SHELL



**HARDWARE CONFIGURATIONS**  
 STANDARD HARDWARE CONFIGURATION



ALTERNATE HARDWARE CONFIGURATION



PVC MOLDED HOOD  
 GRAY (PANTONE 424C)

"P1"  
 DB9 MALE  
 CONNECTOR

PIN 1

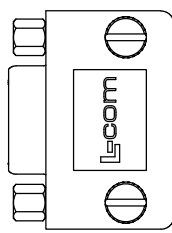
2X #4-40 UNC-2B  
 HEX STANDOFF

2X #4-40 UNC-2A  
 THUMBSCREW

.149±.014  
 [3.8±.35]

PIN 1

"J1"  
 DB9 FEMALE  
 CONNECTOR



**NON CONTROLLED DRAWING IF PRINTED**

- NOTES:**
- ADAPTER SHALL BE TESTED FOR CONTINUITY.
  - ADAPTER SHALL BE INDIVIDUALLY PACKAGED IN ACCORDANCE WITH MILESTEK SPECIFICATION PS-0054.
  - PRODUCT SHIPPED IN STANDARD HARDWARE CONFIGURATION SHOWN ABOVE AND IN EXPLODED VIEW.
  - OPERATING TEMPERATURE RANGE: -15°C~+70°C

**REGULATORY COMPLIANCE:**  
 CE2011/65/EU (ROHS DIRECTIVE)

REV	DESCRIPTION	DATE	APPROVED
A	REV A DRAWING RELEASED	05/16/18	B.PUCHASKI

DSC00287

UNLESS OTHERWISE SPECIFIED ALL DIMENSIONS ARE IN INCHES		DATE		MilesTek	
OVERALL CABLE LENGTH TOLERANCE:		SIGNATURE	DATE	MILESTEK CORPORATION	
>1/2 (305) 560 (1524) = ±.01 / .01	±.01	B.PUCHASKI	05/10/18	301 ROCKVALE, NE, 250E 100	
>1/2 (305) 560 (1524) = ±.01 / .01	±.01	J.JAROVY	B.PUCHASKI	PHONE: (940) 484-4400	
>1/2 (305) 560 (1524) = ±.01 / .01	±.01	B.GATES	05/10/18	FAX: (940) 564-1047	
>300 (7620) = +.3% / -.0%		APPROVED MANUFACTURING:		TITLE	
X = ±.2 (508)		CUSTOMER APPROVAL		ADPT1,DB9M/F RA ORIENTATION 3	
.XXX = ±.003 (13)		DASH NEXT ASSY USED ON		SHEET 1 OF 1	
CUSTOMER REFERENCE DOCUMENT:		CAGE CODE: 42977		DRAWING NUMBER:	
				DSC00287	
				SCALE: NTS	