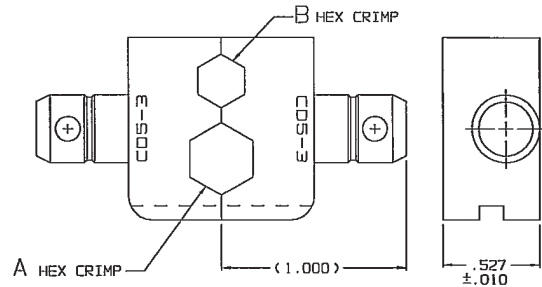


DASH NO	CRIMP TYPE		CABLE GROUP ACCOMMODATED	DANIELS MFG PART NO
	CLOSURE A ± .003	CLOSURE B ± .003		
-1	.213 HEX	.178 HEX	-001, -003, -004, -007, -008, -009, -010, -011, -012, -021	
-2	.324 HEX	.255 HEX	-013, -014, -016, -018, -019, -022, -023, (-015, -018, PL130CP)	
-3	.344 HEX	.290 HEX	-015, -017, -020, -024	
-4	.218 HEX	.193 SHIELD	-201, -202, -203, -204, -205, -218	Y631 ⚠ ⚠
-5		.197 HEX	-002, -005, -006	
-6	.309 HEX	.272 HEX	-013, -013A, -014, PL130CP ONLY	
-7	.218 HEX	.165 HEX	-301 CJ/PL160C & SPCBP/S	Y775
-8	.344 HEX	.263 SHIELD	-207, -210 THRU -216 ("150AC" LG BODY SERIES) -201 THRU -218 ("70C" SERIES ONLY)	Y778 ⚠
-9	.255 HEX	.193 SHIELD	-201 THRU -206, -208, -209, -217 -218 ("150 AC" SM BODY, AND 450AC SERIES)	Y687 ⚠
-10	.344 HEX	.210 HEX	-301 THRU -304 ("70C" SERIES") -306 THRU -309 ("150AC" SMALL BODY SERIES)	Y776
-11	.255 HEX	.165 HEX	-301, -302, -303 ("150AC" SM BODY SERIES ONLY)	Y777
-12	OBSOLETE AND REPLACED WITH -120			
-13	.344 HEX	.208 HEX	-306 ("150AC" LG BODY SERIES)	Y803
-14	.296 HEX	.263 SHIELD	PL75MC -201 THRU -224	⚠ ⚠
-15	.404 HEX	.358 SHIELD	PL75MC -226	⚠ ⚠
-16	.404 HEX		LIPL2000-D5	
-45	.231 HEX	.218 HEX	-201 THRU -206, -208, -209, -217, -218 ("PLR455AC" SERIES)	Y143
-120	.255 HEX	.193 SHIELD	-201 THRU -206, -208, -209, -217, -218 ("PLR455AC" SERIES)	Y789(F) ⚠

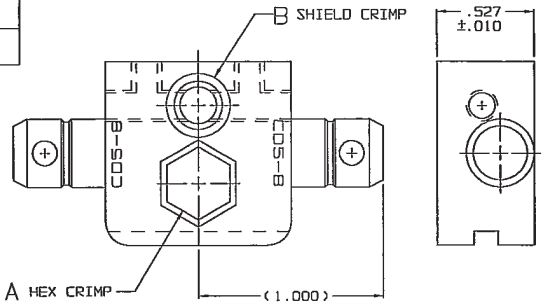
- ⚠ USE WITH LOCATOR PLATE
- 6. 2 LOCK PINS SUPPLIED LOOSE WITH EACH DIE SET
- 5. -4, -8, -9, -12 & -14 SUPPLIED WITH HEX WRENCH (.078 HEX) FOR SHIELD ADJUSTMENT
- ⚠ SEE TAI-160 FOR SHIELD CRIMP ADJUSTMENT AND HEX CAVITY GAUGING INSTRUCTIONS. GAUGE FOR SHIELD CRIMP ADJUSTMENT TO BE PURCHASED SEPARATELY AS FOLLOWS:

DIE P/N	GAUGE P/N
CD5-4	010-0039-301
CD5-8	010-0039-304
CD5-9	010-0039-301
CD5-120	010-0039-301
CD5-14	010-0039-304
CD5-15	010-0049-308

- 3. CRIMP DIE SETS FOR USE WITH HAND CRIMP TOOL M22520/S-01
- 2. FINISH: BLACK OXIDE
- 1. ALL DIM ARE IN INCHES UNLESS OTHERWISE SPECIFIED AND ARE APPLICABLE TO BOTH DIE HALVES EXCEPT CRIMP DIM WHICH ARE FOR DIE HALVES IN A MATED CONDITION



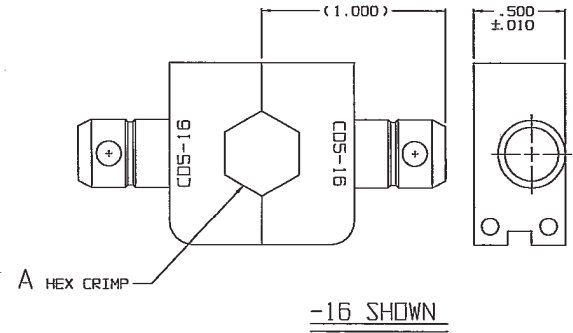
-3 SHOWN



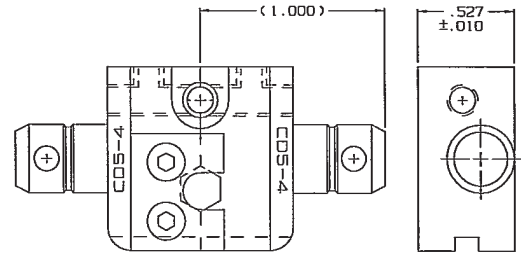
-8 SHOWN

DATA CONTAINED IN THIS DOCUMENT IS PROPRIETARY TO TROMPETER ELECTRONICS, INC. AND SHALL NOT BE DISCLOSED, COPIED OR USED FOR REPRODUCTION OR MANUFACTURE WITHOUT EXPRESS WRITTEN PERMISSION OF TROMPETER ELECTRONICS, INC.

REVISONS		010-0049	SH 1
REV	DESCRIPTION	DATE	APPROVED
AA	REVISED PER ECO 15958		<i>Am</i>



-16 SHOWN



-4 SHOWN

UNLESS DRAWING PER TEL-510-100 CONFORMING ARE IN INCHES NO HOLE OR DIA. DIMENSIONS UNLESS OTHERWISE SPECIFIED		TOL: UNLESS SPECIFIED .XX .XXX ± .005 .XXXX ANGLES			TITLE: <p style="text-align: center;">CD5</p>	
DRAWN <i>1-25-06</i>	DATE 1-24-06	MATERIAL:	FINISH:		SIZE A 14949	DRAWINGS NO. 010-0049
NEXT ASSY	QTY 1	PART NO. 010-0049AA	DIM NOT SCALE DIM	SCALE 2/1	DATE 3/20/07	SHEET 1C