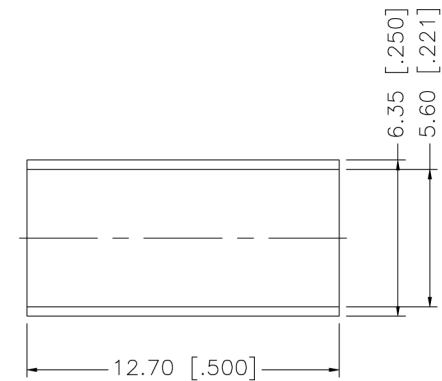
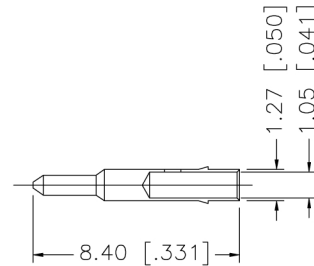
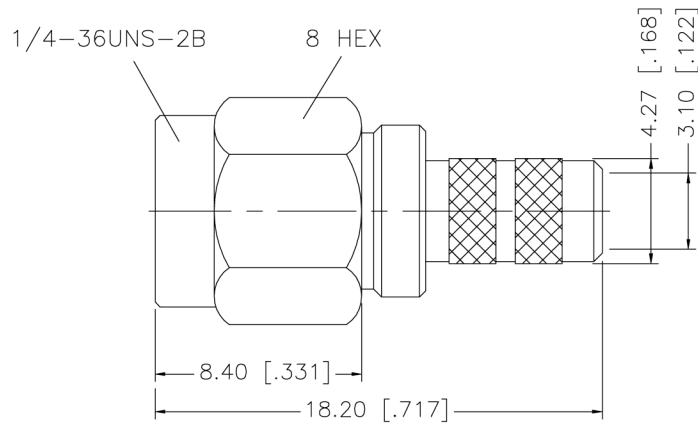


RECOMMENDED CABLE STRIPPING DIMENSIONS



CRIMP NOTES:

1. CRIMPED FERRULE
HEX CRIMP SIZE .213"
2. SOLDER CENTER CONTACT

8				<p>UNLESS OTHERWISE SPECIFIED TOLERANCES FOR MILLIMETERS ARE: 0.5 - 8mm ± 0.20mm 8 - 30mm ± 0.40mm 30 - 120mm ± 0.50mm</p> <p>UNLESS OTHERWISE SPECIFIED TOLERANCES FOR INCHES ARE: .020 - .315 = ± 0.007" .315 - 1.180 = ± 0.015" 1.180 - 4.724 = ± 0.020"</p>	<p>SIGNATURE</p> <p>DATE</p>	<p>MilesTek</p> <p>MILESTEK CORPORATION 1506 INTERSTATE 35 WEST DENTON, TX 76207 PHONE: 866.524.1553 FAX: 940.591.7086</p>	
7			<p>DRAWN BY: M. GREENHILL</p> <p>10/01/2010</p>				<p>PART DISCRIPTION: SMA M CRIMP (CAPTIVE CONTACT) RG55, RG142, RG223 & RG400</p>
6			<p>CHECKED BY:</p> <p>APPROVED ENGINEERING:</p>				
5			<p>APPROVED MANUFACTURING:</p>				<p>REV.-A</p> <p>DO NOT SCALE DRAWING</p> <p>SHEET 1 OF 1</p>
4							
3	INSULATOR	TEFLON	NATURAL				
2	CONTACT PIN	BRASS	GOLD				
1	BODY	BRASS	GOLD				
	DESCRIPTION	MATERIAL	FINISH	<p>DRAWING NUMBER: 11-SMA005.PDF</p> <p>CAGE CODE: 4Z977</p>			