

REV	DESCRIPTION	DATE	APPROVED
A	REV A DRAWING RELEASED	05/16/18	B.PUCHASKI

REV	DESCRIPTION	DATE	APPROVED
A	REV A DRAWING RELEASED	05/16/18	B.PUCHASKI

REV	DESCRIPTION	DATE	APPROVED
A	REV A DRAWING RELEASED	05/16/18	B.PUCHASKI

MDIC00005

A

PROPRIETARY NOTICE

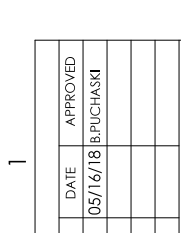
This document discloses confidential subject matter in which Milestek Corporation and its subsidiaries have proprietary rights. Neither receipt nor possession thereof confers or grants the recipient any right, title, or interest in or any part thereof, and no information contained herein, or any physical article or device, or to practice any method or process, except by written permission from, or written agreement with Milestek Corporation and its subsidiaries.

WIRING MAP

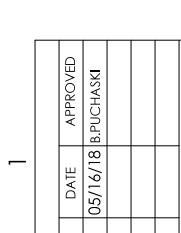
"P1"	"J1"
3	1
1	2
2	3
6	9
4	10
5	11
9	17
7	18
8	19
12	24
10	23
11	22
15	6
16	7
17	15
18	14
19	16
SHELL	SHELL



"P1"  
DVI-D DUAL LINK  
MALE CONNECTOR  
(BLACK INSULATOR)



"J1"  
HDMI FEMALE CONNECTOR  
BLACK INSULATOR  
NICKEL PLATED SHELL



PVC OVERMOLD  
BLACK

4-40 UNC

2X THUMBSCREW

NOTES:

- ADAPTOR IS SHIPPED WITH DUST COVERS IN PLACE (NOT SHOWN)
- ADAPTOR SHALL BE TESTED FOR CONTINUITY.
- ADAPTOR SHALL BE INDIVIDUALLY PACKAGED IN ACCORDANCE WITH MILESTEK SPECIFICATION PS-0054.

REGULATORY COMPLIANCE:  
CE2011/65/EU (RoHS DIRECTIVE)

CAD SYSTEM DRAWING - DO NOT REVISE MANUALLY

SIGNATURE	DATE
B.PUCHASKI	05/10/18
J.JAROVY	05/10/18
B.GATES	05/10/18
CUSTOMER APPROVAL	

UNLESS OTHERWISE SPECIFIED ALL DIMENSIONS ARE IN INCHES	TITLE
OVERALL CABLE LENGTH TOLERANCE: >12 (305) 560 (1424) = +.0 (0) / -.0 >120 (3048) 5320 (13502) = +.0 (0) / -.0 >300 (7620) = +.0% / -.0%	ADPTR DV124+5 M to HDMI F
ALL OTHER DIMENSIONAL TOLERANCES: X = ± .0125 (1/8) Y = ± .0062 (1/16) XXX = ± .003 (1/32)	

DRAWN BY:	DATE	SCALE: NTS
B.PUCHASKI	05/10/18	1
J.JAROVY	05/10/18	2
B.GATES	05/10/18	3
CUSTOMER APPROVAL		4

SIGNATURE	DATE	SCALE: NTS
B.PUCHASKI	05/10/18	1
J.JAROVY	05/10/18	2
B.GATES	05/10/18	3
CUSTOMER APPROVAL		4

DASH	NEXT ASSY	USED ON	APPLICATION

CAGE CODE: 42977	DRAWING NUMBER:
	MDIC00005

Milestek Corporation  
301 Brockville, Suite 100  
Brockville, Ontario, Canada  
K6H 1K6  
PHONE: (949) 484-4400  
FAX: (949) 564-1047

NON CONTROLLED DRAWING IF PRINTED

REGULATORY COMPLIANCE:  
CE2011/65/EU (RoHS DIRECTIVE)

CAD SYSTEM DRAWING - DO NOT REVISE MANUALLY

SHEET 1 OF 1