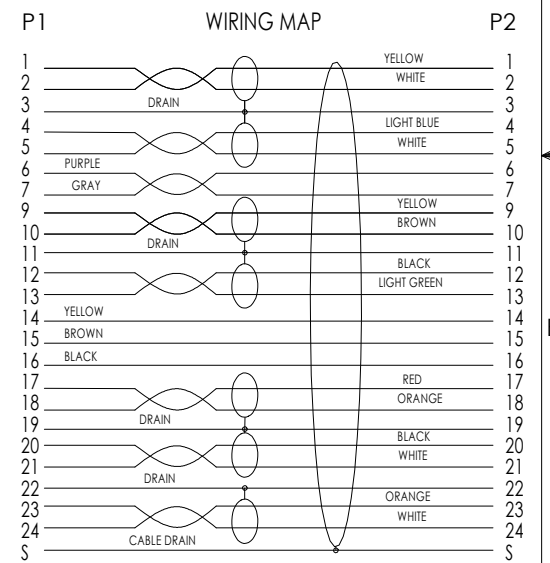
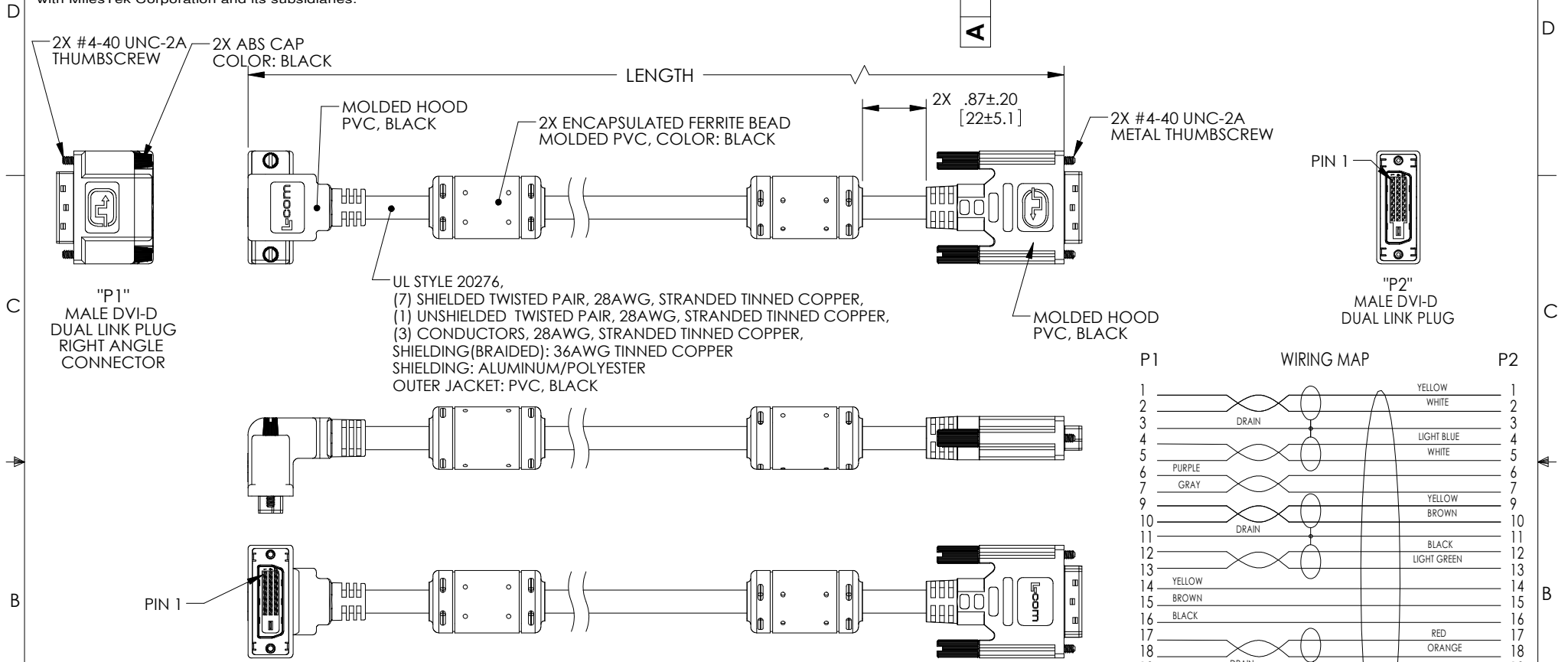


PROPRIETARY NOTICE

This document discloses confidential subject matter in which MilesTek Corporation and its subsidiaries have proprietary rights. Neither receipt nor possession thereof confers or transfers any right to reproduce or disclose the document, any part thereof, any information contained therein, or any physical article or device, or to practice any method or process, except by written permission from, or written agreement with MilesTek Corporation and its subsidiaries.

REVISIONS			
REV	DESCRIPTION	DATE	APPROVED
A	INITIAL RELEASE	06/08/17	J.YOU



PART NUMBER	LENGTH	
	METERS	[FEET]
MDA00029-0.5M	0.5	[1.64]
MDA00029-1M	1.0	[3.28]
MDA00029-2M	2.0	[6.56]
MDA00029-3M	3.0	[9.84]
MDA00029-4M	4.0	[13.12]
MDA00029-5M	5.0	[16.41]

- NOTES:**
1. CABLE ASSEMBLY TO BE TESTED FOR CONTINUITY
  2. CABLE ASSEMBLY TO BE INDIVIDUALLY PACKAGED IN ACCORDANCE WITH SPEC. PS-0054.
  3. DUST COVERS INSTALLED FOR SHIPPING (NOT SHOWN).

**REGULATORY COMPLIANCE:**  
 CE2011/65/EU(RoHS DIRECTIVE)

**NON CONTROLLED DRAWING IF PRINTED**

AS9100C CERTIFIED			CAD SYSTEM DRAWING - DO NOT REVISE MANUALLY			
UNLESS OTHERWISE SPECIFIED ALL DIMENSIONS ARE IN INCHES			SIGNATURE		DATE	<p>MILESTEK CORPORATION                  1506 INTERSTATE 35 WEST                  DENTON, TX 76207                  PHONE: 866.524.1553                  FAX: 940.591.7086</p>
OVERALL CABLE LENGTH TOLERANCE: ≤12 [305] = +1 [25] / -0 >12 [305] ≤60 [1524] = +2 [51] / -0 >60 [1524] ≤120 [3048] = +4 [102] / -0 >120 [3048] ≤300 [7620] = +6 [152] / -0 >300 [7620] = +5% / -0%			DRAWN BY: J.YOU		06/08/17	
ALL OTHER DIMENSIONAL TOLERANCES: .X = ±.2 [5.08] .XX = ±.02 [5.1] .XXX = ±.005 [1.3]			CHECKED BY: B.GATES		06/08/17	TITLE
DASH NEXT ASSY USED ON APPLICATION			APPROVED ENGINEERING: S.PAN		06/08/17	CBL DVI-D DL RA
CUSTOMER REFERENCE DOCUMENT:			APPROVED MANUFACTURING:			SIZE
			CUSTOMER APPROVAL			A
			CAGE CODE: 42977			DRAWING NUMBER:
						MDA00029
						SCALE: NTS
						SHEET 1 OF 1