

User's Manual



DVI UTP EXTENDER

How to install, set up and use your new products



Introduction

The DVI extender over UTP cable transmits digital signal up to 100 ft passive and 200 ft active using one cat 5e/cat 6 cable. The product contains either 2 pigtail units or 2 wall plate units, and the transmitter and receiver. The pigtail style and wall plate style can be mix-N-matched for different applications. The extender will transmit and boot DVI signal up to 100 ft. with resolution of 1024 x 768, and XGA for passive with no power required.

Features

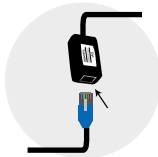
- Extends signal up to 200ft @ 1024 x 768, XGA or 100ft @ 1600 x 1200, UXGA (Active)
- Extends signal up to 100ft @ 1024 x 768, XGA or 50ft @ 1600 x 1200, UXGA (Passive)
- DVI 1.1 compliant (Bandwidth = 1.64Gbps)
- Adjustable 8-level EQ control for Video Quality on Receiver side (Active)
- Detachable surface mount bracket included on Receiver side (Active)
- Cable stripper/Punch down tool include for Wall Plate style
- Transmitter: 1 x DVI input / 1 x RJ45 (110) output
- Receiver: 1 x RJ45 (110) input / 1 x DVI output

Package Contents

- Transmitter
- Receiver
- Manual
- Power Supply (Active)
- Screwdriver (Active)
- Cable stripper/Punch down tool (Wall Plate style)

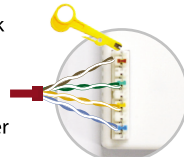
Installation

Step 1a. Connect UTP cable to RJ-45 socket on both the Transmitter and Receiver

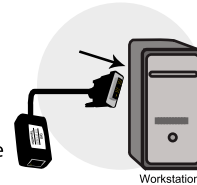


or

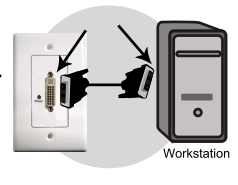
Step 1b. Connect UTP cable to the 110 block according to the color code on the wall plate using the included cable stripper /Punch down tool



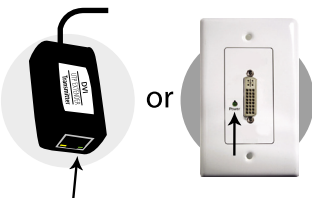
Step 2. Connect the Transmitter to the work station (PC) with the DVI pigtail or with a DVI male to male cable for wall plate style



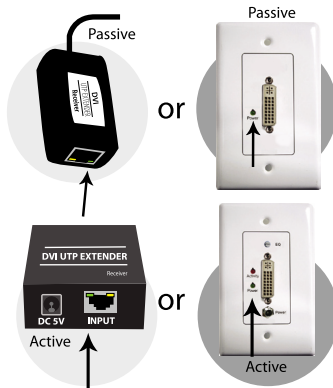
or



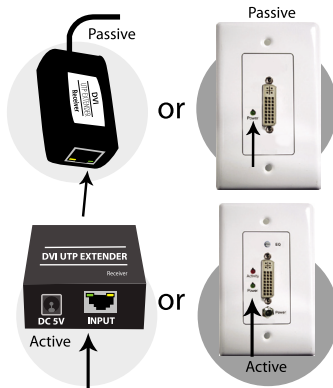
Step 3. The Transmitter is functioning properly when Green LED lights up and is solid on the RJ-45 socket or on the wall plate



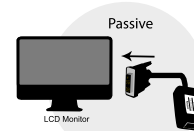
or



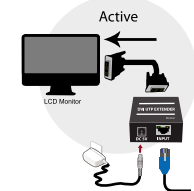
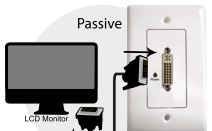
Step 5. The Receiver is functioning properly when Green LED lights up and is solid on the RJ-45 socket or on the wall plate



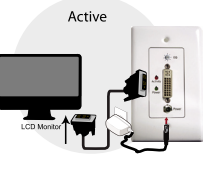
Step 4. Connect the Receiver to the Display (monitor) with the DVI pigtail or with a DVI male to male cable for wall plate style, plug in the power for active application



or



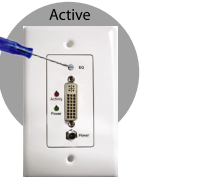
or



Step 6. Use the screwdriver to adjust the EQ to get a better resolution for the active application

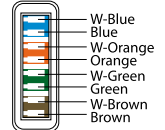
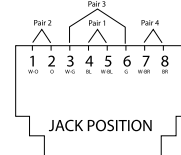


or



Wiring Information

Conductor Identification	RJ45 Pin Assignment	Color code for conductor
Pair 1	5	White-Blue
	4	Blue
Pair 2	1	White-Orange
	2	Orange
Pair 3	3	White-Green
	6	Green
Pair 4	7	White-Brown
	8	Brown



Color code on the back of the wall plate

Safety Information

- To reduce the risk of electric shock, do not expose this product to rain or moisture.
- Operate this product using only the included external power supply. Use of other power supplies could impair performance, damage the product, or cause fire.
- Use only recommended accessories to avoid fire, shock or other hazards.
- Unplug this product before cleaning. Use a damp cloth for cleaning. Do not use cleaning fluids or aerosols, which could enter the unit and cause damage, fire or electrical shock.
- Do not attempt to service this unit. Instead, disconnect it and contact your Authorized Reseller or technician.

Warranty

This product is to be free from defects in material and workmanship for the following limited warranty period:

6 months for parts and 90 days for labor.

Manufacturer will repair or replace the product only if the product has not been subjected to mechanical, electrical, or other forms of abuse or modification, and if the product fails and the manufacturer is notified within the first 6 months of purchase.

This warranty is superseded all other warranties expressed or implied, including without limitation, any implied warranty or merchantability or fitness for any particular purpose, all of which are expressly disclaimed.

The information in this manual has been carefully checked and is believed to be accurate; however, the manufacturer assumes no responsibility for any inaccuracies that may be contained in this manual. In no event will the manufacturer be liable for direct, indirect, special, incidental, or consequential damages resulting from any defect or omission in this manual, even if advised of the possibility of such damages. The technical information contained herein regarding DVI UTP Extender features and specifications is subject to change without notice.