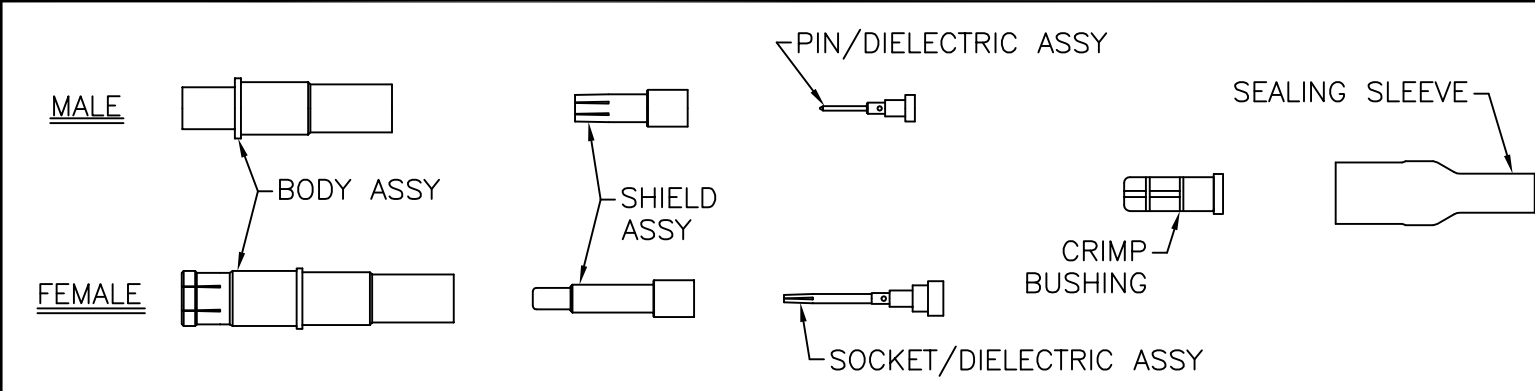


THE INFORMATION CONTAINED HEREON IS THE PROPERTY OF EMERSON NETWORK POWER, RECEIPT, POSSESSION OR TRANSMITTAL OF THIS DRAWING DOES NOT LICENSE OR IMPLY ANY RIGHT TO USE, SELL, PROTOTYPE OR MANUFACTURE FROM THIS INFORMATION. NO REPRODUCTIONS OR PUBLICATION OF THIS INFORMATION, IN WHOLE OR IN PART, SHALL BE MADE WITHOUT WRITTEN AUTHORIZATION FROM EMERSON NETWORK POWER.

DWG NO. TAI-132 SH 1

REVISIONS			
REV	DESCRIPTION	DATE	APPROVED
H	ECO 53419	6/22/11	T. SCHIEBE

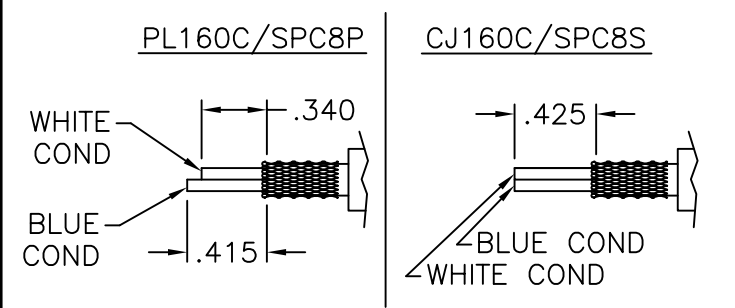
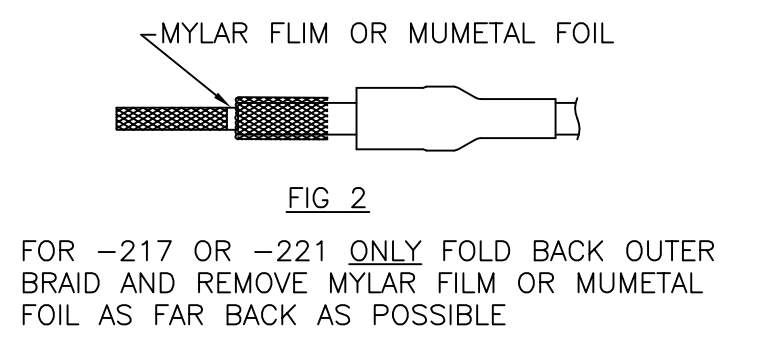
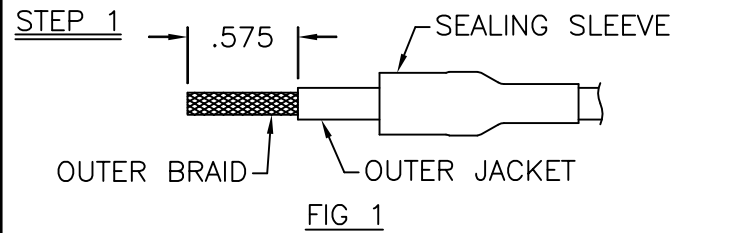


STEP 3

A. BEND WHITE CONDUCTOR OUTWARD AND POSITION BLUE CONDUCTOR TO CENTER OF CABLE.

B. INSTALL PIN/SOCKET/DIELECTRIC ASSY ONTO CABLE WITH BLUE CONDUCTOR INTO CENTER CONTACT & WHITE CONDUCTOR POSITIONED THROUGH SIDE SLOT.

C. CRIMP IN PLACE THROUGH DIELECTRIC (SEE TABLE FOR CRIMP TOOL AND ACCESSORIES).



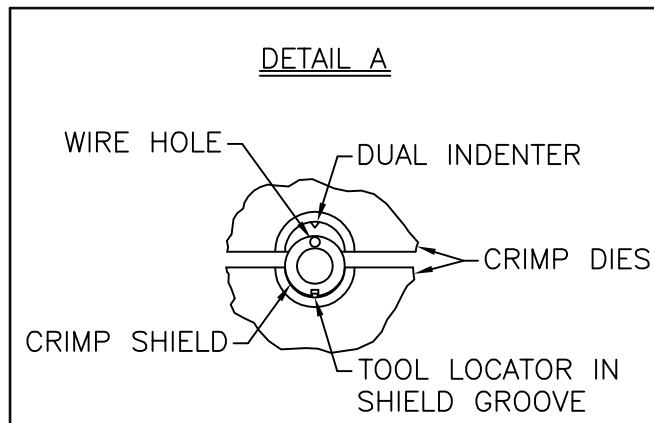
- A. PLACE SEALING SLEEVE ONTO CABLE AS SHOWN.
- B. REMOVE JACKET TO .575 DIMENSION FOR -217 OR -221, SEE FIG 2.
- C. FOLD BRAID(S) BACK OVER JACKET.
- D. CUT CONDUCTORS TO DIMENSION SHOWN

STEP 4

A. PLACE SHIELD OVER PIN/SOCKET/DIELECTRIC ASSY.

B. PUT WHITE CONDUCTOR INTO SMALL HOLE AT REAR OF SHIELD ASSY AND BOTTOM SHIELD ASSY AGAINST PIN/SOCKET/DIELECTRIC ASSY SHOULDER.

C. CRIMP IN PLACE (SEE DETAIL A AND TABLE FOR CRIMP TOOLS AND ACCESSORIES).



BASIC CRIMPING TOOL	CTR CONTACT POSITIONER	INTERMEDIATE (SHIELD) CRIMP DIE	OUTER SHIELD (BODY) CRIMP DIE	SOURCE
M22520/5-01	-	1 CD5-5/CLOSURE B	1 DC5-4/CLOSURE A	1 TEI
M22520/2-01	2 K709	-	-	2 DANIELS
M22520/5-01	-	2 Y631/CLOSURE B	2 Y631/CLOSURE A	2 DANIELS

STEP 2

A. TAPER BRAID FORWARD OVER CONDUCTORS.

B. PUSH CABLE THROUGH CRIMP BUSHING UNTIL JACKET BOTTOMS INSIDE CRIMP BUSHING.

C. FOLD BRAID BACK OVER CRIMP BUSHING, TRIM AT SHOULDER IF REQUIRED, STRIP CONDUCTORS AND (OPTIONAL) LIGHTLY TIN.

STEP 5

A. PUSH ASSEMBLY INTO BODY ASSY UNTIL BOTTOMED, HOLD ASSEMBLY FIRMLY BOTTOMED UNTIL FULLY HEX CRIMPED.

B. BRING SEALING SLEEVE UP AS FAR AS POSSIBLE ONTO ASSEMBLY AND SHRINK IN PLACE.

UNLESS OTHERWISE SPECIFIED DIMENSIONS ARE IN INCHES TOLERANCES ARE:

FRACTIONS ±	DECIMALS .XX ±	ANGLES ±
	.XXX ±	
	.XXXX ±	

SIGNATURES: DRAWN BY C. WALLACE, CHECKED BY T. SCHIEBE, APPROVED BY T. KOHLER, DATE 6/30/11, 7/1/11, 7/1/11

EMERSON Network Power Connectivity Solutions

CJ160/PL160C/SPC8P/SPC8S TO TWINAX CABLE

SIZE B, CAGE CODE 14949, DWG NO. TAI-132, REV H

SCALE N/A, DATE 2/2/87, SHEET 1 OF 2

ASSEMBLY INSTRUCTIONS
FOR CJ160C/PL160C/SPC8P/SPC8S TO TWINAX CABLE

EMERSON Network Power Connectivity Solutions
299 JOHNSON AVENUE
WASECA, MN 56093-0832
T:507 833 8822 F:507 833 6287
WWW.EMERSONCONNECTIVITY.COM
MGF. CODE NO. 14949

TAI-132 REV H
MADE IN USA