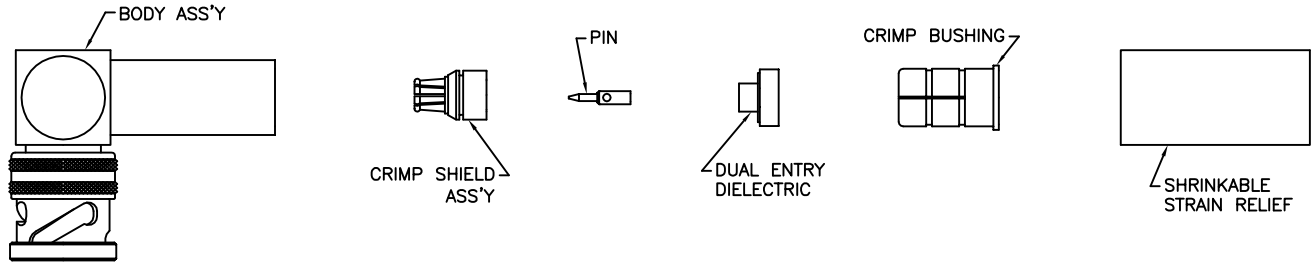
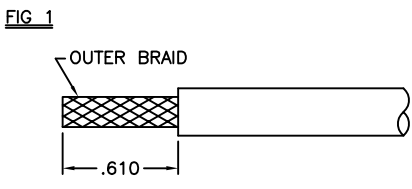


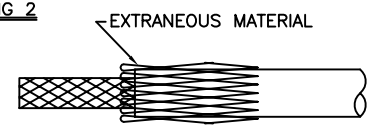
REVISIONS			
REV	DESCRIPTION	DATE	APPROVED
E	ECO 52894	1/18/11	T. SCHIEBE



**STEP 1**

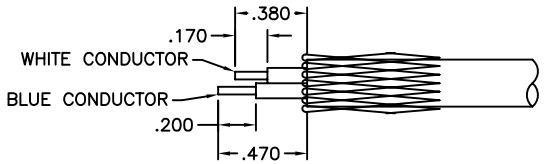


**FIG 2**



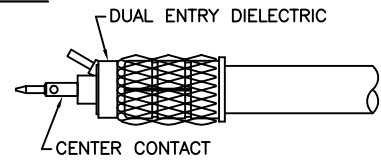
FOR DOUBLE SHIELDED OR QUADRAX CABLE, FOLD BACK OUTER BRAID AND REMOVE EXTRANEIOUS MATERIAL (MYLAR, MU-METAL ETC) AS FAR BACK AS POSSIBLE.

**FIG 3**



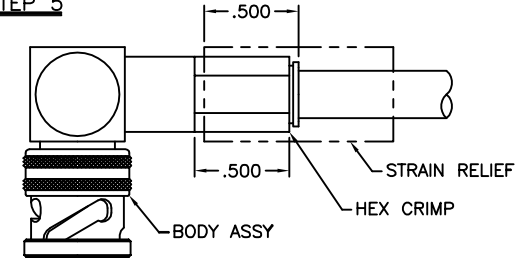
- A. REMOVE OUTER JACKET TO DIM SHOWN IN FIG 1, FOR DOUBLE SHIELDED OR QUADRAX CABLES SEE FIG 2.
- B. FOLD BRAID(S) BACK OVER JACKET.
- C. CUT CONDUCTORS AS SHOWN IN FIG 3, (OPTIONAL) LIGHTLY TIN.

**STEP 3**



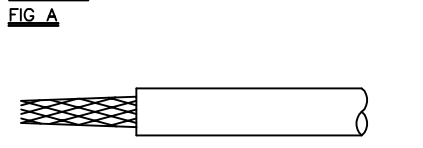
- A. BEND WHITE CONDUCTOR OUTWARD AND POSITION BLUE CONDUCTOR TO CENTER OF CABLE.
- B. INSTALL DUAL ENTRY DIELECTRIC WITH BLUE CONDUCTOR THRU CENTER HOLE AND WHITE CONDUCTOR THRU SIDE SLOT.
- C. POSITION CENTER CONTACT OVER BLUE CONDUCTOR AND CRIMP IN PLACE USING MILITARY CRIMP TOOL M22520/1-01 SELECTION 4 WITH TROMPETER POSITIONER 010-0044 FOR PINS AND 010-0045 FOR SOCKETS.

**STEP 5**

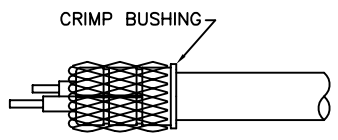


- A. PUSH ASS'Y INTO BODY ASS'Y UNTIL BOTTOMED, HOLD ASS'Y FIRMLY BOTTOMED UNTIL FULLY HEX CRIMPED AS SHOWN USING MILITARY CRIMP TOOL M22520/5-01 WITH TROMPETER CD5-8 (DANIELS Y778) DIE SET, POSITION A.
- B. BRING STRAIN RELIEF UP ONTO BODY ASS'Y TO (APPROX) DIM SHOWN AND SHRINK IN PLACE.

**STEP 2**

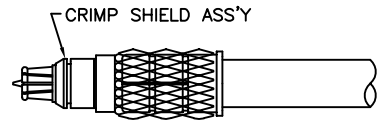


**FIG B**

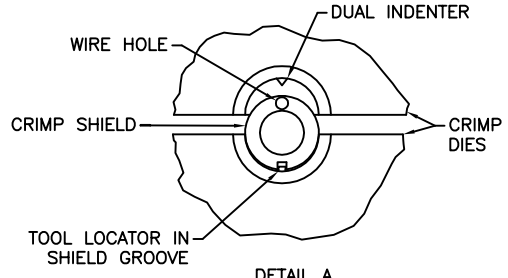


- A. BRING BRAID(S) FORWARD OVER CONDUCTORS AND TWIST BRAID(S) AROUND CONDUCTORS (FIG A).
- B. PLACE STRAIN RELIEF ONTO CABLE.
- C. PUSH CABLE THRU CRIMP BUSHING UNTIL JACKET BOTTOMS INSIDE CRIMP BUSHING.
- D. FOLD BACK BRAID(S) OVER CRIMP BUSHING (FIG B).

**STEP 4**



- A. PLACE CRIMP SHIELD ASS'Y OVER CENTER CONTACT, INSERT WHITE CONDUCTOR INTO SMALL HOLE AT REAR OF CRIMP SHIELD ASS'Y AND BOTTOM AGAINST DUAL ENTRY DIELECTRIC.
- B. CRIMP IN PLACE USING MILITARY CRIMP TOOL M22520/5-01 WITH TROMPETER CD5-8 (DANIELS Y778) DIE SET, POSITION B (SEE DETAIL A).



**ASSEMBLY INSTRUCTIONS**

RIGHT ANGLE "70C" & "150AC"  
LARGE BODY SERIES TO  
.171-.250 DIA TWINAX CABLE



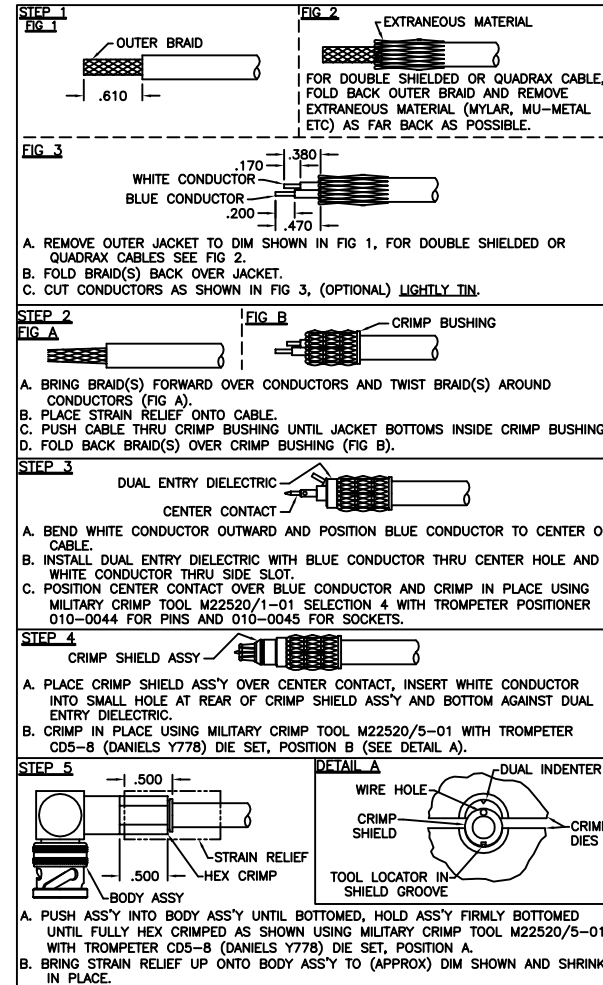
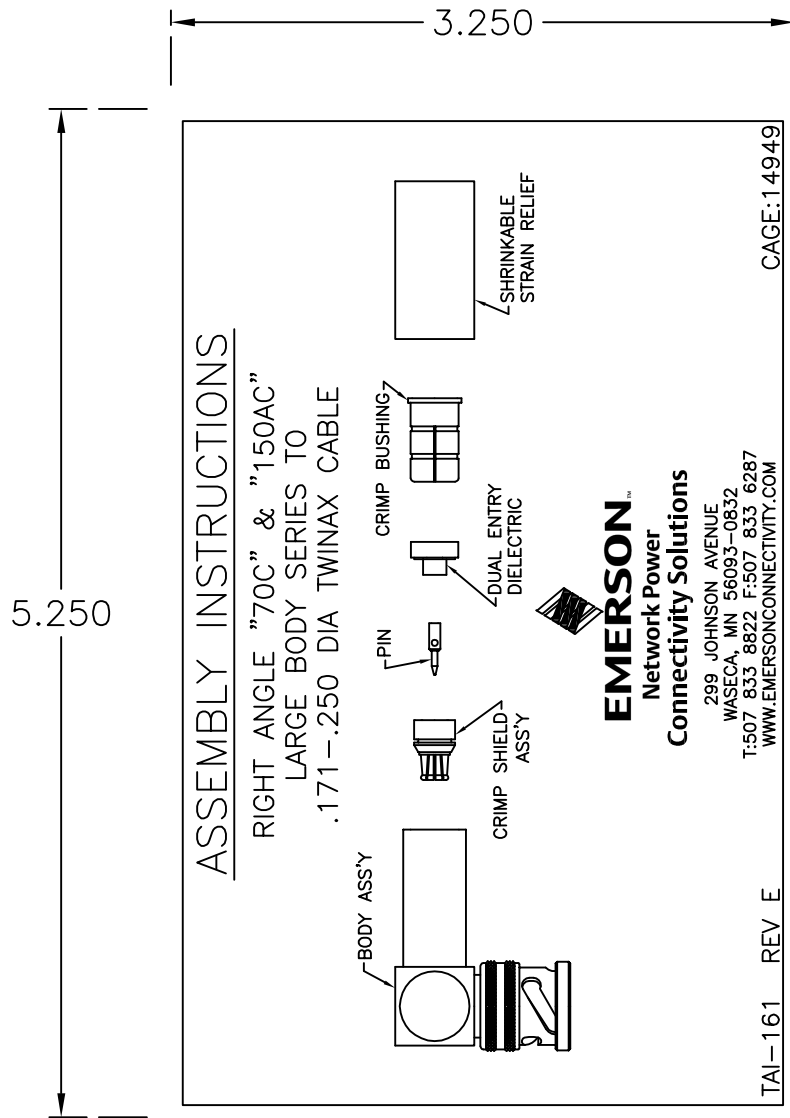
**Connectivity Solutions**  
299 JOHNSON AVENUE  
WASECA, MN 56093-0832  
T:507 833 8822 F:507 833 6287  
WWW.EMERSONCONNECTIVITY.COM  
MGF. CODE NO. 14949

TAI-161

REV E

MADE IN USA

UNLESS OTHERWISE SPECIFIED DIMENSIONS ARE IN INCHES TOLERANCES ARE:		<b>EMERSON Network Power</b>	
FRACTIONS	DECIMALS	ANGLES	
± .005	± .0005	±	
SIGNATURES	DATE	RA 70C & 150AC LG BODY	
DRAWN BY C. WALLACE	1/24/11	TO .171-.250 DIA TWINAX CABLE	
CHECKED BY		SIZE	CAGE CODE
APPROVED BY		C	14949
APPROVED BY		DWG NO.	TAI-161
		SCALE	N/A
		DATE	8/11/87
		SHEET	1 OF 1



SIZE A	CAGE CODE 14949	DWG NO. TAI-161	REV E
SCALE 1:1	DATE 8/11/87	SHEET 2 OF 2	