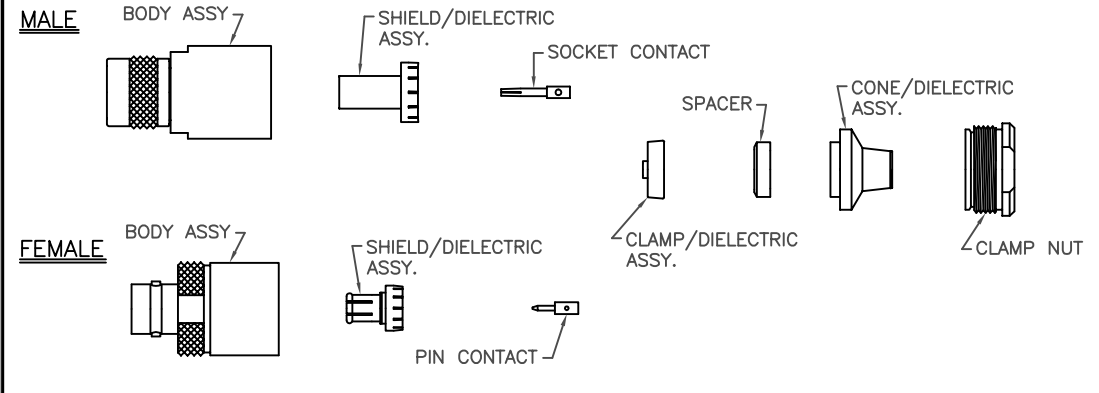


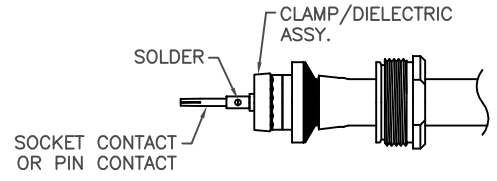
THE INFORMATION CONTAINED HEREON IS THE PROPERTY OF EMERSON NETWORK POWER, RECEIPT, POSSESSION OR TRANSMITTAL OF THIS DRAWING DOES NOT LICENSE OR IMPLY ANY RIGHT TO USE, SELL, PROTOTYPE OR MANUFACTURE FROM THIS INFORMATION. NO REPRODUCTIONS OR PUBLICATION OF THIS INFORMATION, IN WHOLE OR IN PART, SHALL BE MADE WITHOUT WRITTEN AUTHORIZATION FROM EMERSON NETWORK POWER.

DWG NO. TAI-175 SH 1

REVISIONS			
REV	DESCRIPTION	DATE	APPROVED
D	ECO 52208	5/17/10	T. KOHLER



STEP 3



- A. PLACE CLAMP/DIELECTRIC ASSY. (WITH TAPER AS SHOWN) OVER CABLE DIELECTRIC WITH CENTER CONDUCTOR THRU CENTER HOLE UNTIL SEATED AGAINST INNER BRAID.
- B. PLACE SOCKET CONTACT OR PIN OVER CONDUCTOR UNTIL BOTTOMED INSIDE CLAMP/DIELECTRIC ASSY. AND SOLDER IN PLACE.

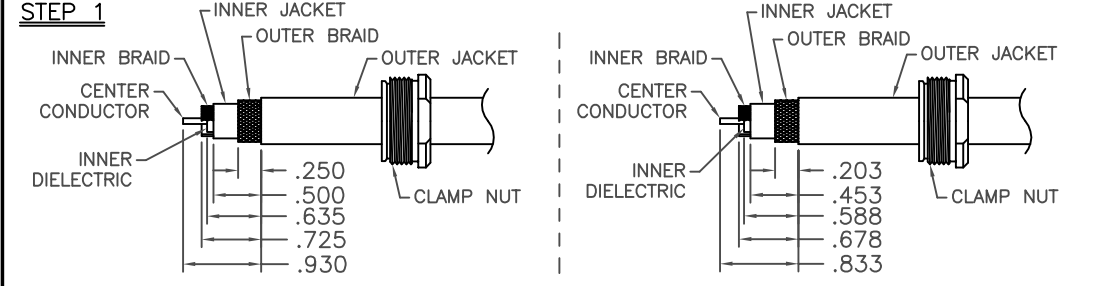


FIG 1

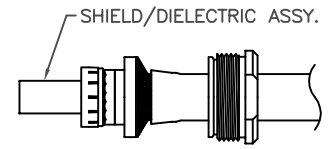
ALL OTHER CABLE GROUPS

FIG 2

CABLE GROUP -13A ONLY

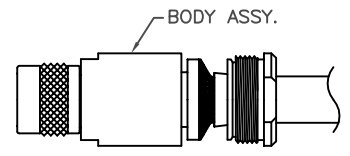
- A. PLACE CLAMP NUT ONTO CABLE AS SHOWN.
- B. BEGINNING WITH A SQUARE CUT, STRIP CABLE AS SHOWN IN FIG. 1 OR FIG. 2, REMOVE WATER BLOCKING IF ANY.
- C. LIGHTLY TIN CONDUCTOR

STEP 4



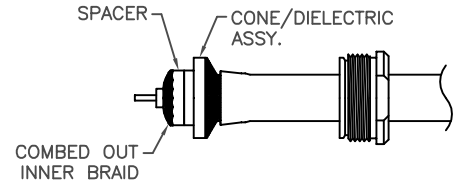
- A. INSTALL SHIELD/DIELECTRIC ASSY OVER SOCKET CONTACT OR PIN CONTACT AND CLAMP/DIELECTRIC ASSY. UNTIL BOTTOMED.

STEP 5



- A. BRING CLAMP NUT UP ONTO TAPERED PORTION OF CABLE.
- B. INSTALL BODY ASSY. OVER ENTIRE ASSY AND ENGAGE WITH CLAMP NUT.
- C. WRENCH TIGHTEN TO 30-40 IN LB TORQUE.

STEP 2



- A. PUSH CONE/DIELECTRIC ASSY. UNDER OUTER BRAID UNTIL BRAID IS FLUSH WITH OUTSIDE DIAMETER OF CONE.
- B. PLACE SPACER OVER INNER JACKET UNTIL SEATED AGAINST CONE/DIELECTRIC ASSY. WITH ANGLED SIDE FACING AWAY FROM CONE/DIELECTRIC ASSY.
- C. COMB OUT INNER BRAID AND FOLD BACK OVER SPACER AND TRIM INNER BRAID TO BE FLUSH WITH OUTSIDE EDGE OF SPACER IF REQUIRED.

UNLESS OTHERWISE SPECIFIED DIMENSIONS ARE IN INCHES TOLERANCES ARE:

FRACTIONS ±	DECIMALS .XX ±	ANGLES ±
	.XXX ±	
	.XXXX ±	

EMERSON Network Power **Connectivity Solutions**

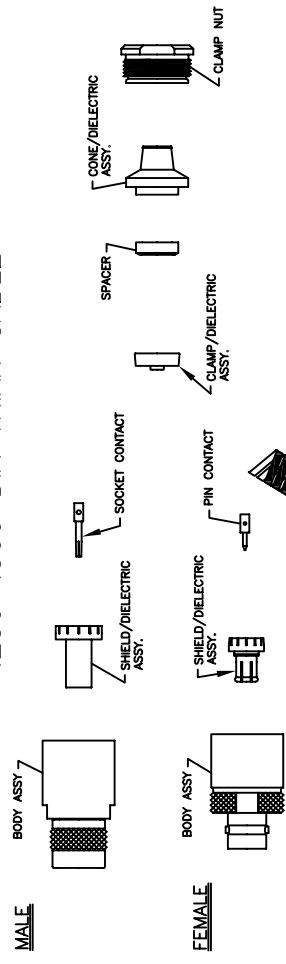
SIGNATURES	DATE
DRAWN BY C. WALLACE	5/17/10
CHECKED BY	
APPROVED BY	
APPROVED BY	

"80" SERIES WRENCH CRIMP TO .250-.500 DIA TRIAX CABLE			
SIZE B	CAGE CODE 14949	DWG NO. TAI-175	REV D
SCALE N/A			SHEET 1 OF 2

3.250

5.250

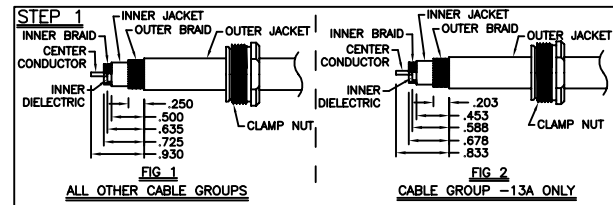
ASSEMBLY INSTRUCTIONS
 "80" SERIES WRENCH CRIMP TO
 .250-.500 DIA TRIAX CABLE



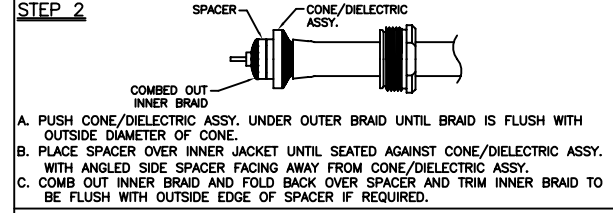
EMERSON™
 Network Power
 Connectivity Solutions

299 JOHNSON AVENUE
 WASECA, MN 56093-0832
 T:507 833 8822 F:507 833 6287
 WWW.EMERSONCONNECTIVITY.COM

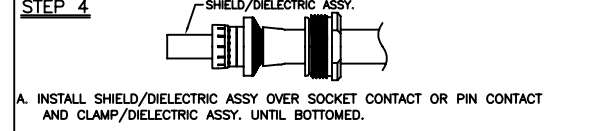
CAGE:14949
 TAI-175 REV D



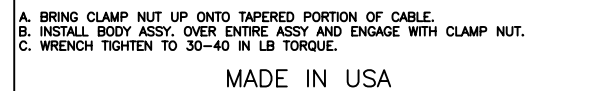
- STEP 1**
- PLACE CLAMP NUT ONTO CABLE AS SHOWN.
 - BEGINNING WITH A SQUARE CUT, STRIP CABLE AS SHOWN IN FIG. 1 OR FIG. 2. REMOVE WATER BLOCKING IF ANY.
 - LIGHTLY TIN CONDUCTOR.



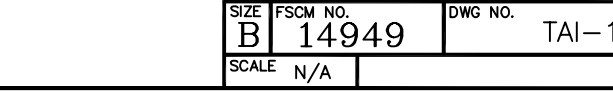
- STEP 2**
- PUSH CONE/DIELECTRIC ASSY. UNDER OUTER BRAID UNTIL BRAID IS FLUSH WITH OUTSIDE DIAMETER OF CONE.
 - PLACE SPACER OVER INNER JACKET UNTIL SEATED AGAINST CONE/DIELECTRIC ASSY. WITH ANGLED SIDE SPACER FACING AWAY FROM CONE/DIELECTRIC ASSY.
 - COMB OUT INNER BRAID AND FOLD BACK OVER SPACER AND TRIM INNER BRAID TO BE FLUSH WITH OUTSIDE EDGE OF SPACER IF REQUIRED.



- STEP 3**
- PLACE CLAMP/DIELECTRIC ASSY. (WITH TAPER AS SHOWN) OVER CABLE WITH CENTER CONDUCTOR THRU CENTER HOLE UNTIL SEATED AGAINST INNER BRAID.
 - PLACE SOCKET CONTACT OR PIN OVER CONDUCTOR UNTIL BOTTOMED INSIDE CLAMP/DIELECTRIC ASSY. AND SOLDER IN PLACE.



- STEP 4**
- INSTALL SHIELD/DIELECTRIC ASSY OVER SOCKET CONTACT OR PIN CONTACT AND CLAMP/DIELECTRIC ASSY. UNTIL BOTTOMED.



- STEP 5**
- BRING CLAMP NUT UP ONTO TAPERED PORTION OF CABLE.
 - INSTALL BODY ASSY. OVER ENTIRE ASSY AND ENGAGE WITH CLAMP NUT.
 - WRENCH TIGHTEN TO 30-40 IN LB TORQUE.

MADE IN USA

PRINT 1:1 SCALE DOUBLE SIDED

SIZE	FSCM NO.	DWG NO.	REV
B	14949	TAI-175	D
SCALE	SHEET 2 OF 2		
N/A			