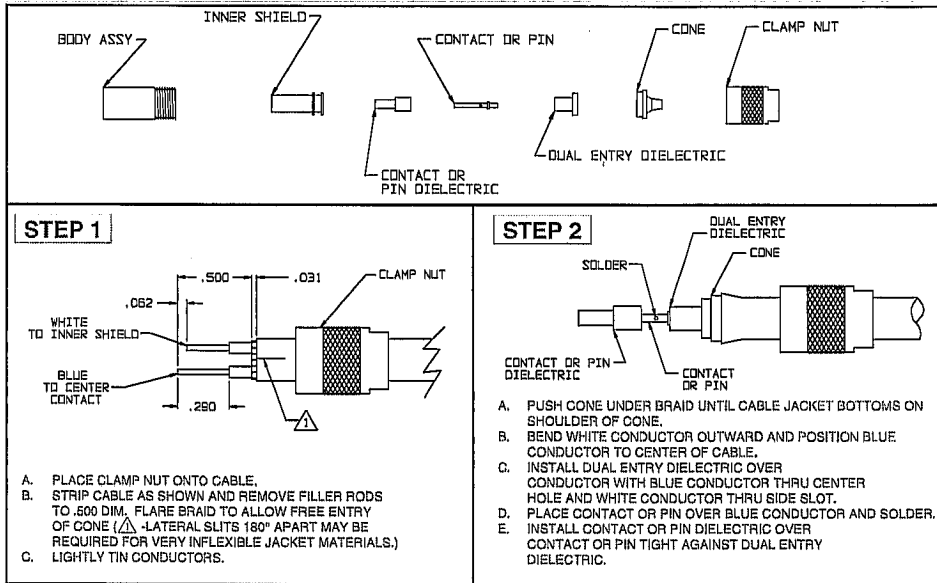
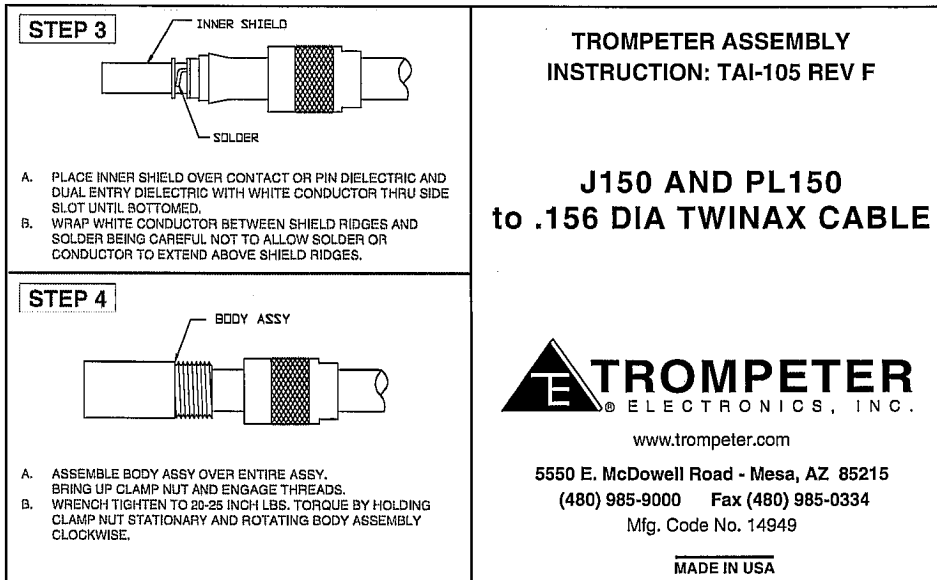


1. PRINT TO SCALE
2. IF BAG, THEN PERFORATION REQUIRED.
3. IF INSERT CARD, THEN PRINT DOUBLE SIDED.

WHITE PLATE



CLEAR PLATE



TROMPETER ASSEMBLY INSTRUCTION: TAI-105 REV F

J150 AND PL150 to .156 DIA TWINAX CABLE



www.trompeter.com

5550 E. McDowell Road - Mesa, AZ 85215
 (480) 985-9000 Fax (480) 985-0334
 Mfg. Code No. 14949

MADE IN USA

RED INDICATES ORIGINAL

DISK#	DWG SIZE	DATA CONTAINED IN THIS DOCUMENT IS PROPRIETARY TO TROMPETER ELECTRONICS, INC. AND SHALL NOT BE DISCLOSED, COPIED OR USED FOR PROCUREMENT OR MANUFACTURE WITHOUT EXPRESS WRITTEN PERMISSION	
ADVTSG	A	REV	ECO
		F	15661
		UPDATE ADDRESS	REVISIONS
			DESCRIPTION
		BG	DWN
		MS	APPROVED
		10/17/04	DATE
			SH
			TAI-105

QTY	DESCRIPTION		DESCRIPTION	ITEM
TOL UNLESS SPECIFIED XX ± XXX ± .XXXX ±				
DWN	BG	10/02/04		J150/PL150 TO .156 DIA TWINAX CABLE
CHK	MS	10-4-04	MATERIAL	CODE IDENT
ENGR	BP	10-6		14949
Q/A	MS	10-6-04	DRAWING NO	REV
APPR	MS	10/4/04	TAI-105	F
		SCALE 1/1	DATE: 4/17/79	SHEET OF