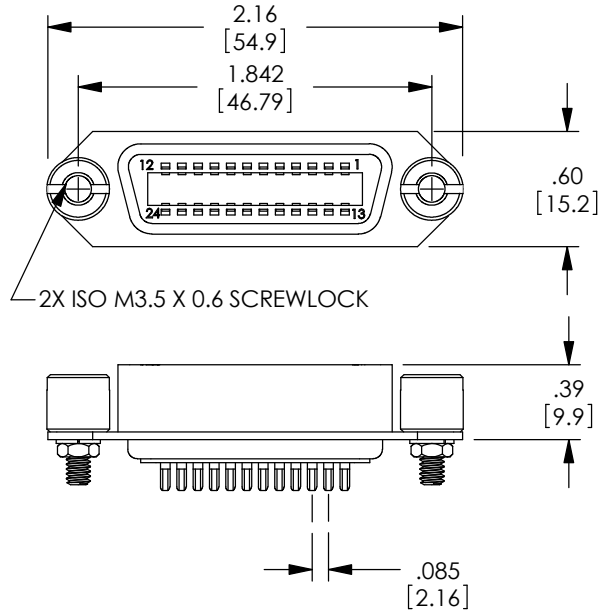


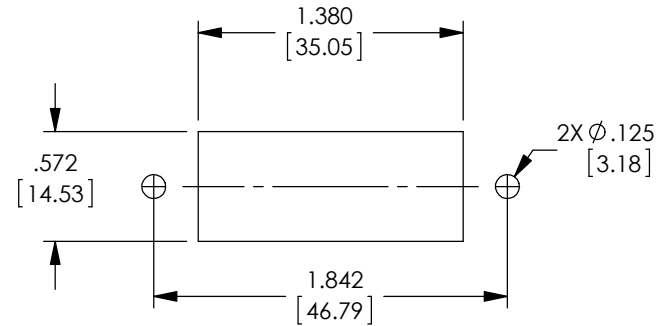
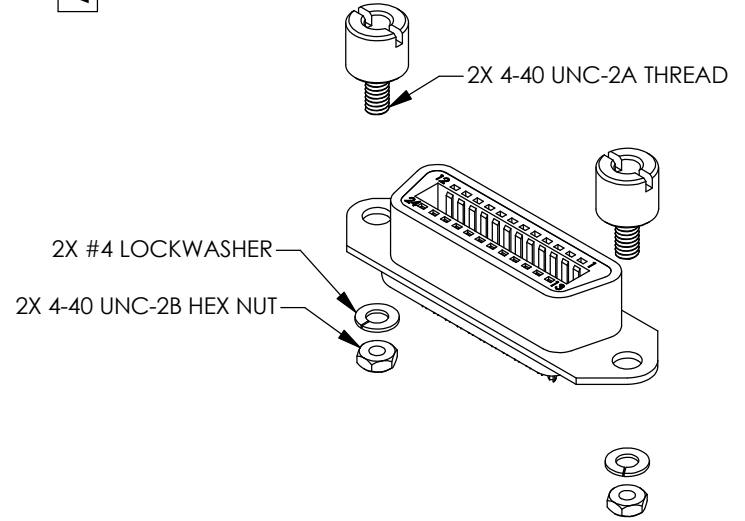
PROPRIETARY NOTICE

This document discloses confidential subject matter in which MilesTek Corporation and its subsidiaries have proprietary rights. Neither receipt nor possession thereof confers or transfers any right to reproduce or disclose the document, any part thereof, any information contained therein, or any physical article or device, or to practice any method or process, except by written permission from, or written agreement with MilesTek Corporation and its subsidiaries.

REVISIONS			
REV	DESCRIPTION	DATE	APPROVED
A	INITIAL RELEASE	06/01/17	J.YOU



24-CONTACT FEMALE MINIATURE RIBBON CONNECTOR



RECOMMENDED PANEL CUTOUT

NOTES:

- MATERIALS:
CONTACTS: PHOSPHOR BRONZE OR BRASS
INSULATOR: BLUE POLYBUTYLENE TEREPHTHALATE (PBT)
U.L. 94V-0 RATED
SHELL: STEEL, ZINC OR TIN PLATED
- FINISHES:
CONTACTS: GOLD PLATED
TERMINALS: TINNED
SHELL: NICKEL PLATED
SCREWLOCKS: BLACK OXIDE
- SUPPLIED WITH HARDWARE ASSEMBLED.
- ALL DIMENSION ARE FOR REFERENCE ONLY.
- COMPONENT ASSEMBLY SHALL BE INDIVIDUALLY PACKAGED IN ACCORDANCE WITH SPECIFICATION PS-0054.

REGULATORY COMPLIANCE:
CE2011/65/EU (RoHS DIRECTIVE)

NON CONTROLLED DRAWING IF PRINTED

AS9100C CERTIFIED			CAD SYSTEM DRAWING - DO NOT REVISE MANUALLY			
DASH	NEXT ASSY	USED ON	UNLESS OTHERWISE SPECIFIED ALL DIMENSIONS ARE IN INCHES	SIGNATURE	DATE	 MILESTEK CORPORATION 1506 INTERSTATE 35 WEST DENTON, TX 76207 PHONE: 866.524.1553 FAX: 940.591.7086
			OVERALL CABLE LENGTH TOLERANCE: ≤12 [305] = +1 [25] / -0 >12 [305] ≤60 [1524] = +2 [51] / -0 >60 [1524] ≤120 [3048] = +4 [102] / -0 >120 [3048] ≤300 [7620] = +6 [152] / -0 >300 [7620] = +5% / -0% ALL OTHER DIMENSIONAL TOLERANCES: .X = ±.2 [5.08] .XX = ±.02 [51] .XXX = ±.005 [13]	DRAWN BY: J.YOU CHECKED BY: Brian G. APPROVED ENGINEERING: S.PAN APPROVED MANUFACTURING: CUSTOMER APPROVAL:	06/01/17 06/01/17 06/01/17	
APPLICATION			CUSTOMER REFERENCE DOCUMENT:	CAGE CODE: 42977	SCALE: NTS	DRAWING NUMBER: MGPB00001 SHEET 1 OF 1